



RadBlue Protocol Analyzer Version 19

[Released: 07 DEC 2011]

Questions?

Log on to the RadBlue Forum: <http://radblue.mywowbb.com/>

Release Notes

Release Summary

For this release, we added a new installation requirement (**Java SE 6 Update 29**), made improvements to disruptive filters and addressed Message Transcript issues.

For more information on the features and modifications discussed in this document, see the [RPA User Guide](#).

Usage Note

The default value of the Common Name (CN) field, located on **Tools > Configure > Security Options > Certificates > SCEP**, is **-1**. When setting the Common Name in RPA, this value must equal the host ID that RPA proxies.

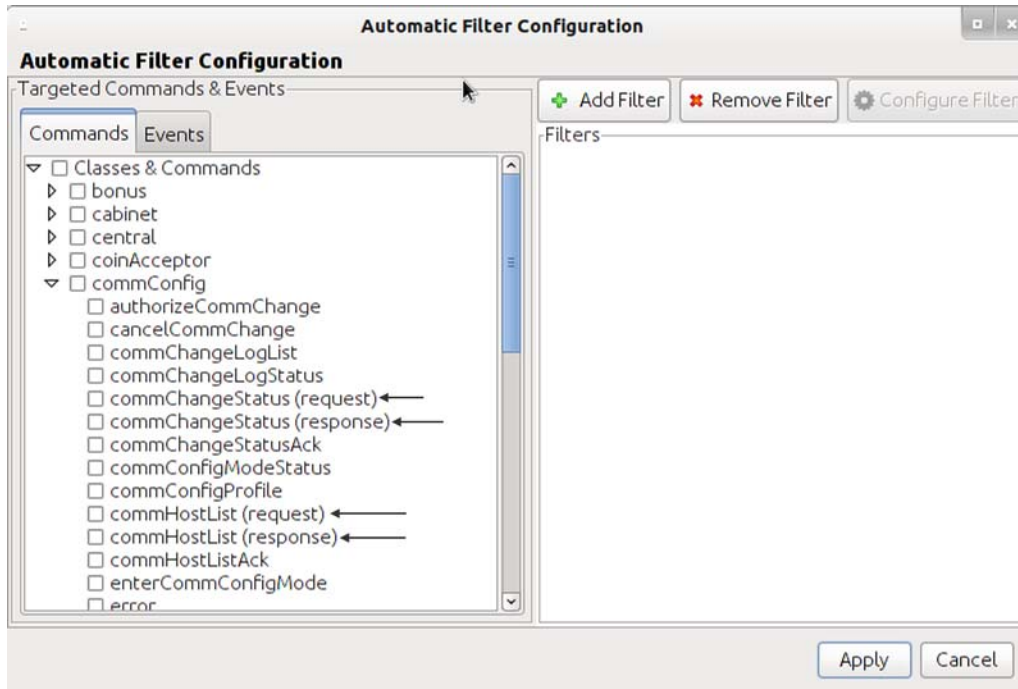
Installation Modifications

- RAS now requires **Java SE 6 Update 29**. If you do not have this version of Java on the computer, the installer will automatically retrieve and install it. If you are using a **64-bit Linux**, [contact RadBlue](#).

If you are installing on a secure network, see [Bulletin 06 - Installing on a Secure Network](#).

Engine Modifications

- Interactive and automatic filters now handle commands that are both requests and responses as *separate* commands.



The interactive and automatic filter panels, separate commands that are both requests and responses into two separate commands in the tree view.

For the purposes of these filters a request is either a G2S NOTIFICATION or a REQUEST. A response is a G2S RESPONSE.

Transcript Modifications

- The **Previous** and **Next** buttons, which were disabled in release 18, now function properly.
- In order to bring you a better Transcript experience, we have removed the additional, **G2SACK**, **Req-Resp** and **Transport Message** buttons introduced in release 18, on the message details screen in the Message Transcript. We are making improvements to these features and will re-introduce them in a future release.



RadBlue Protocol Analyzer Version 18

[Released: 03 OCT 2011]

Questions?

Log on to the RadBlue Forum: <http://radblue.mywowbb.com/>

Release Notes

Release Summary

In this release,

For more information on the features and modifications discussed in this document, see the [RPA User Guide](#).

Installation Modifications

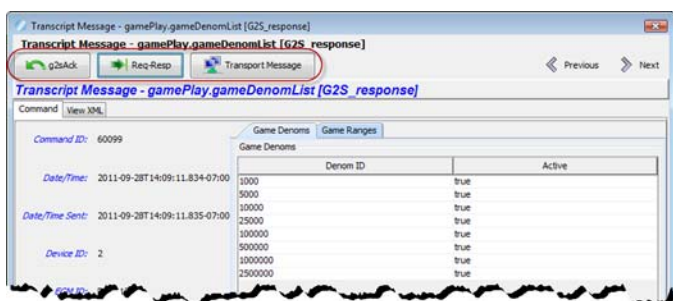
- An issue in which an incorrect status for an SCEP certificate request was displayed on the screen (for example, a failed request showing a successful completion) has been corrected.

Engine Modifications

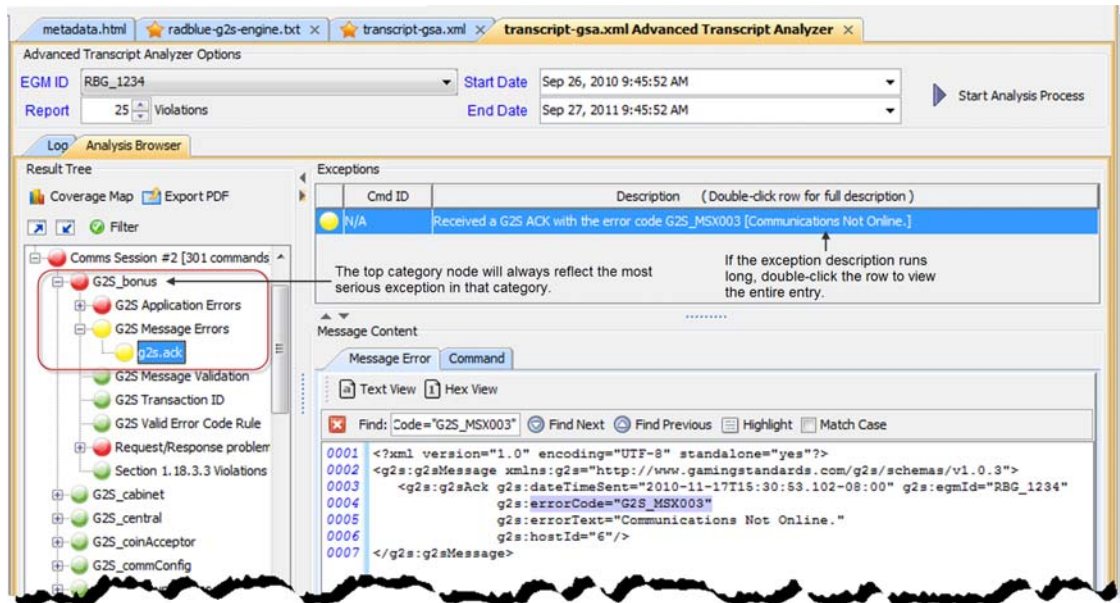
- An issue in which an incorrect status for an SCEP certificate request was displayed on the screen (for example, a failed request showing a successful completion) has been corrected.
- An issue that prevented the student edition of the tools from communicating has been corrected.
- RPA now validates the system URL when it is configured by the user. When RPA is switched from G2S to S2S, the system URL is set to **UNKNOWN**.

Transcript Modifications

- The message details screen in the Message Transcript (accessed by double-clicking any message in the Transcript display) now lets you link to the `g2sAck` message, corresponding request-response pair command or to the associated SOAP message for the selected command.



- The top category node on the Advanced Transcript Analyzer now always reflects the most serious exception (warning or error) found in its subcategories. For example, if there are two warnings (yellow) and one error (red), the top node would indicate an error by displaying a red ball.



- When an exception is selected in the Advanced Transcript Analyzer, if the exception description is truncated, you can now view the entire entry by double-clicking the row.
- Previously, if the information analyzed by the Advanced Transcript Analyzer did not have a comms session, the Coverage Map would not be generated. This caused an error when the Coverage Map button was pressed. This issue has been corrected.
- An issue in which the Advanced Transcript Analyzer ignored *sessionRetry* attribute values has been corrected.

Advanced Transcript Analyzer Usage Note

Transcript messages must be saved in the tool's database in order to use the Advanced Transcript Analyzer. To do this, go to **Tools > Configure > Engine Options > Databases**, and select **Save Transcript Messages to Database**. Note that you can also define the number of messages to save. By default, this option is set to 5,000; however, for tests that generate a large number of messages, this field should be set to a higher number.

Known Message Transcript Issue

The **Previous** and **Next** buttons on the command details screen are disabled. This issue will be corrected in release 19.



RadBlue Protocol Analyzer Version 17

[Released: 01 AUG 2011]

Questions?

Log on to the RadBlue Forum: <http://radblue.mywowbb.com/>

Release Notes

Release Summary

In this release, we added an easy way for RPA to connect to (or disconnect from) the web server, added a keystore management option and made the option configuration screens more user-friendly.

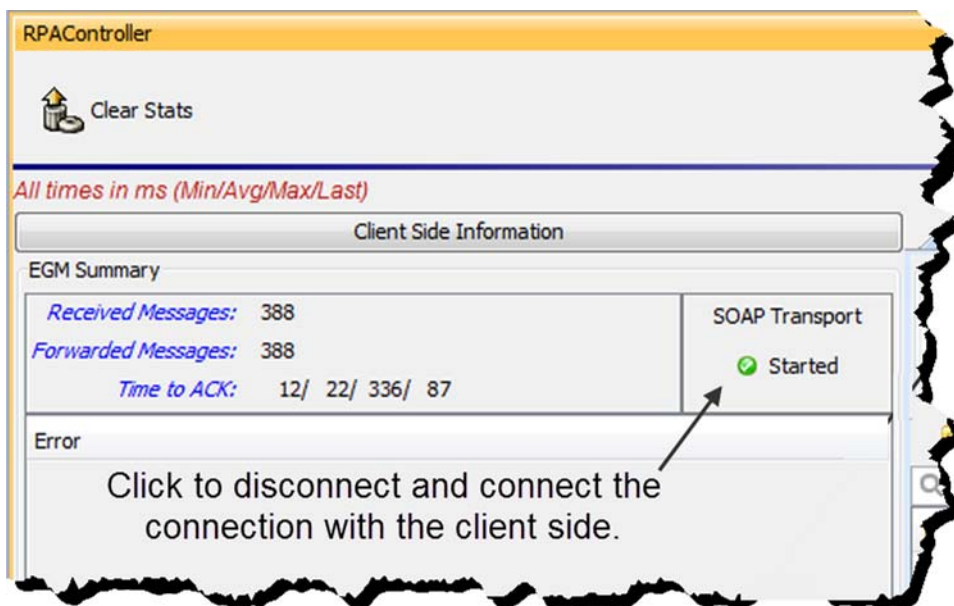
For more information on the features and modifications discussed in this document, see the [RPA User Guide](#).

Installation Modifications

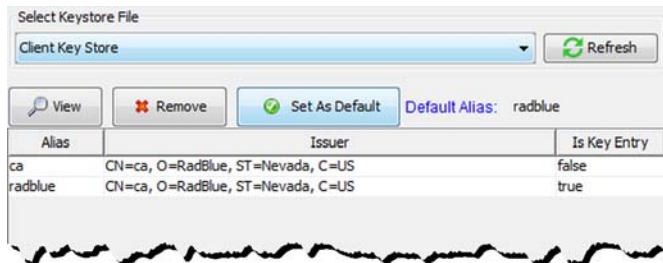
- If you have a previous version of the tool installed in the target directory, you are now prompted to remove it before installing the new version. Click **Next** to uninstall the previous version before continuing with the new installation, or click **Back** to install the new version in a different directory.

Functional Modifications

- A new **SOAP Transport** button for both the client side and host side allows you to start or stop communications with the other side as needed. When a side is stopped, the current web server's socket and any sockets that already exist are closed.



- A new **Keystore** tab on the Security Options configuration screen lets you select the type of keystore file you want to use and manage installed keystore files.

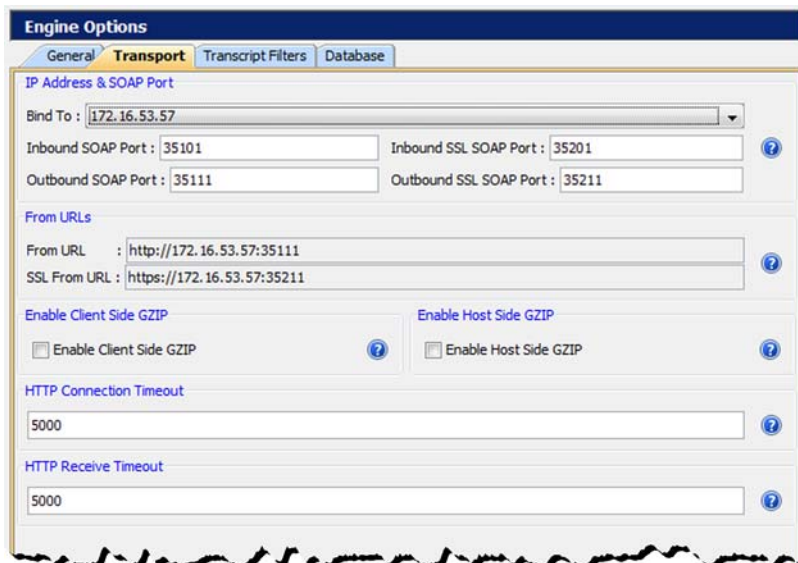


Engine Modifications

- An issue in which the *toSystem* attribute was not being changed on `s2sAck` commands sent to the host side has been corrected.

User Interface Modifications

- **Handler Options** has been removed from the RPA Configuration screen (**Tools > Configuration**).
- Options on the configuration screens (**Tools > Configure**) have been re-organized into tabs for improved usability. For example:



Transcript Modifications

- The size limit of each Message transcript record has been increased to **4MB**. Messages larger than this limit are not stored in the transcript database and an informational message displays in the debug log.
- The size limit of each Multicast transcript record has been increased to **4MB**. Messages larger than this limit are not stored in the transcript database and an informational message displays in the debug log.
- A new **Database** tab on the Engine Options screen (**Tools > Configure**) lets you define database settings as they affect transcripts, including a new **Save Transcript Messages to Database** option.

Select this option to save the defined number of messages in the Message, SOAP and Multicast transcripts to the transcript database. Transcript records only need to be saved in the database if you want them to be persisted between runs of the tool or after you clear the transcript display.

Saving a large number of transcript messages will impact performance. By default, this option is disabled.

- An issue in which changes to the Message transcript's **Event Filter** option were not reflected on the Event Filter screen when it was closed and re-opened has been corrected.
- The **Advanced Transcript Analysis Report** now reflects any filtering that is applied through the Advanced Transcript Analyzer.



RadBlue Protocol Analyzer Version 16

[Released: 06 JUN 2011]

Questions?

Log on to the RadBlue Forum: <http://radblue.mywowbb.com/>

Release Notes

Release Summary

In this release, we re-organized the menu bar options and made a change to how GZIP is set when you switch between G2S and S2S.

For more information on the features and modifications discussed in this document, see the [RPA User Guide](#).

Installation Modifications

- Beginning in release 16, when RPA is uninstalled, a backup folder is created in the RPA directory that saves the installation's security and configuration parameters. When a subsequent RPA version is installed, the installer uses the backed up data to populate security and configuration settings, so you do not need to re-key the information into the new installation.

The backup folder is located in the RPA installation directory. The following files are saved in the backup folder:

- ◆ All Java Keystore Files (.jks)
- ◆ scep_config.xml
- ◆ security_manager.xml
- ◆ webserver.xml
- ◆ Derby Port
- ◆ SOAP Address
- ◆ SOAP Inbound Port
- ◆ SOAP Outbound Port
- ◆ SSL Inbound Port
- ◆ SSL Outbound Port
- ◆ Schema Name
- ◆ Schema Version
- ◆ Side 1 Display Name (Side 1: EGM/Edge)
- ◆ Side 1 Location URI
- ◆ Side 1 Schema Version
- ◆ Side 1 GZIP Enabled

- ◆ Side 1 SSL Enabled
- ◆ Side 2 Display Name (Side 2: Host/Central)
- ◆ Side 2 Location URI
- ◆ Side 2 Schema Version
- ◆ Side 2 GZIP Enabled
- ◆ Side 2 SSL Enabled

Engine Modifications

- When the protocol used by RPA is switched (from G2S to S2S *or* from S2S to G2S), the **Enable Client Side GZIP** and **Enable Host Side GZIP** options (**Tools > Configuration > Engine Options**) are cleared. This disables GZIP in RPA. To enable GZIP, select these options.
- RPA now supports S2S 1.4.2 (as well as 1.2.6 and 1.3.1).
- RPA now has schema support for G2S 1.1.0.

Note In release 16, we moved to G2S 1.1.0. Since the schema is identical to 1.0.3r7, you should be able to use the G2S 1.1 schema for any G2S implementation. If you encounter issues, please let us know and we will help you through them.

User Interface Modifications

- The RPA menu bar options have been re-grouped under the following headings:
 - ◆ **File** - New Desktop, Open Desktop, Save Desktop, Add Layout, Remove Layout, Export Debug, Exit
 - ◆ **Tools** - Configure, Toggle Floor Tabs
 - ◆ **Help** - RPA Help, Contact Us, About Protocol Analyer



RadBlue Protocol Analyzer Version 15

[Released: 04 APR 2011]

Questions?

Log on to the RadBlue Forum: <http://radblue.mywowbb.com/>

Release Notes

Release Summary

In this release, we changed how RPA disconnects from a host.

For more information on the features and modifications discussed in this document, see the [RPA User Guide](#).

Engine Modifications

- The way RPA disconnects to hosts when using SSL has been modified. RPA no longer waits for the host to respond to a close_notify alert. Instead, RPA closes the connection immediately.



RadBlue Protocol Analyzer

Version 14

[Released: 07 FEB 2011]

Questions?

Log on to the RadBlue Forum: <http://radblue.mywowbb.com/>

Release Notes

Release Summary

In this release, we added three new G2S disruptive filters, corrected minor issues and made usability improvements.

For more information on the features and modifications discussed in this document, see the [RPA User Guide](#).

Functional Modifications

- Three new G2S filters have been added to the **Disruptive Filters** module:
 - ♦ The **Attribute Replacement** filter allows you to use an XPath expression to replace a value in a command attribute. When the Attribute Replace filter is enabled, RPA looks for the attribute you specify and replaces the existing value with the new value. You can configure multiple attribute replacements through this filter.
 - ♦ The **Set Comm Change** filter lets you use RPA even if the host has re-written the *hostLocation* to something other than the RPA location by re-writing RPA's URL in the `commHostList` command and replacing it with the host's URL. Additionally, this filter replaces the host's URL in the `setCommChange` command with RPA's URL.
 - ♦ The **Comm Host List** filter sets the *canModRemote* attribute to **false** for the `commHostItem` element that has RPA's URL. When this filter is selected, the host cannot modify the `commHostItem` in the `commHostList`, which effectively disables `commConfig` changes for that host. This allows you to continue to use RPA even if the host re-writes the *hostLocation* to something other than the RPA URL.

Engine Modifications

- An issue in which an unexpected error occurred while creating SCEP certificates has been corrected.
- An issue in which RPA was timing out while trying to connect to a Microsoft-based host running SSL has been corrected.

User Interface Modifications

- The **Edit Filter** button on the RPA layout is now enabled whether or not RPA is running. This modification allows you to modify filter settings as needed, at any time.

Transcript Modifications

Message Transcript

- Transcript records now display in ascending order (newest to oldest) by default. You can see records in descending order by clicking the Date Received column heading.

SOAP Transcript

- Additional detail is now available on the SOAP Transcript detail view, which you can access by double-clicking any record in the transcript. You can now view the XML message content without the SOAP wrapper.

