

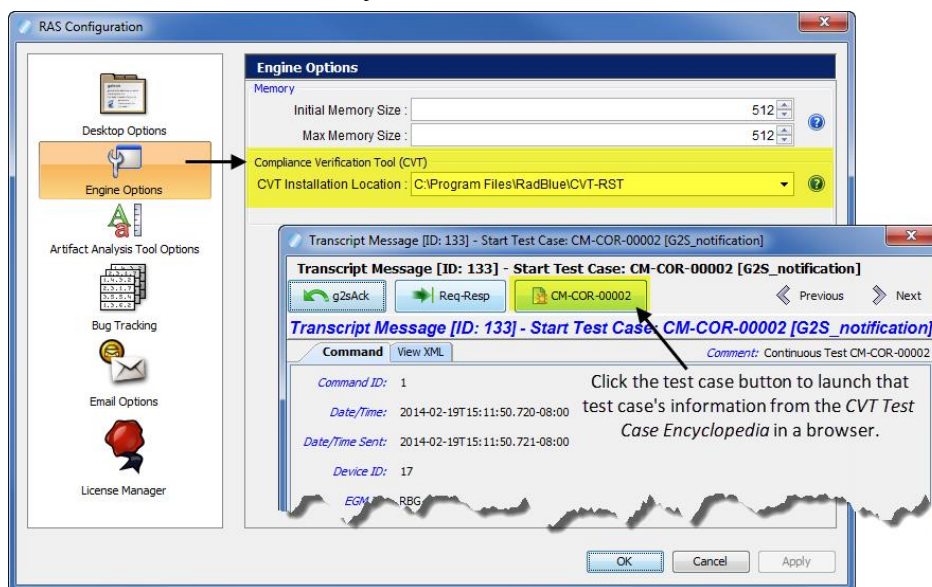
Release Summary

In this release, we added backup files to let you save certain settings between installations of RAS, added the ability to view CVT Test Case Encyclopedia information directly from RAS and made improvements to the Message Transcript and SOAP Transcript.

New Features

- If you are using RAS with the [Compliance Verification Tool \(CVT\)](#), you can now view test cases from the [CVT Test Case Encyclopedia](#) through the message details screen. To view a test case, click the test case button. A browser will launch with the specified section of the *CVT Test Case Encyclopedia*.

Note that you must first map to the CVT directory from the computer that RAS is installed on by going to **Tools > Configure > Engine Options > CVT Installation Location** and navigating to the CVT installation directory.



Configuration Modifications

The following file and configuration options are saved in a backup file, allowing the specified information to be retained between installations:

- **RLT.vmoptions** file
- **Start in Full-Screen Mode** parameter (under Desktop Options)
- **Max G2S Transcript Messages** parameter (under Desktop Options)
- **Max Soap Transcript Messages** parameter (under Desktop Options)
- **Test Cases Location** parameter (under Engine Options)
- All **Artifact Analysis Tool Options**
- All **Email Options**

Transcript Modifications

- Changes to column widths in the Message Transcript and SOAP Transcript are now retained when you scroll through messages by selecting **Previous 1000** and **Next 1000**.
- A new **State** column has been added to the Message Transcript. Message states are: **Standard** (G2S message with no errors), **Error** (G2S message with errors), **Comment** (Comment made in CVT Message Transcript) and **Special Error** (CVT test case error). Sorting the Message Transcript column on State, which you can do by clicking the column header, lets you quickly identify messages with errors and comments.
- An issue in which the data displayed incorrectly in the `eventHandler.eventHandlerLogList` details screen (accessed by double-clicking the message row in the Message Transcript) has been corrected.