

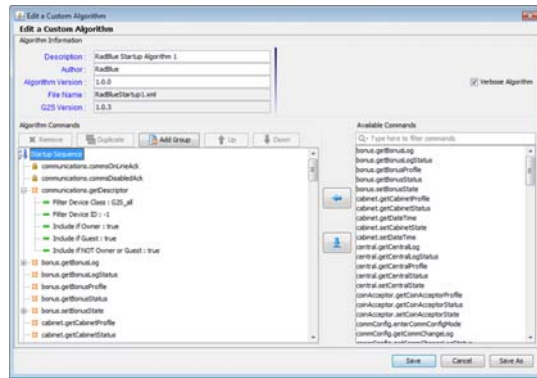


## What Is the Tester Toolkit?

The Tester Toolkit is an optional module for the RadBlue G2S Scope (RGS), our testing and development tool that acts as a G2S host for up to five EGMs. This module lets you customize and extend RGS testing functionality for improved troubleshooting of G2S-based applications.

The Tester Toolkit consists of the Startup Algorithm, Response Manager, Script Runner and Custom Scripting features. Each feature provides you with additional testing flexibility.

## Configurable Startup Algorithm



The Configurable Startup Algorithm gives you complete control of the RGS startup algorithm.

You can rearrange the order of commands, send multiple copies of commands, change the attribute settings on commands, and send multiple commands in a single G2S message.

A stepper control allows you to step through individual commands in the startup algorithm, so you can examine the

state of the EGM (using the Send Command panel) as it processes each startup command. You can save the startup algorithms you create and switch easily between various test scenarios.

## Custom Scripting

With Custom Scripting, you can create powerful scripts of any G2S host-initiated commands through an easy-to-use graphical interface. Custom Scripting can be used by test engineers to develop complex scripts that can then be run over and over by testers. In addition to being able to send any G2S command, scripts can include instructions to testers as well as prompts (for example, "Insert a \$5 bill, and then press Enter"). Scripts can even validate that the EGM meter model is still in balance at selected points in the script.

## Components

Components let you configure event subscriptions, meter subscriptions and macros. Macros are multi-command operations that can be run inside a custom script. In addition, you can configure global device variable templates for use with Custom Scripting.

For more information, contact Russ Ristine at: 775.329.0990 or [Russ@RadBlue.com](mailto:Russ@RadBlue.com)

## Response Manager

The Response Manager lets you control how the RGS responds to any G2S request from the EGM. Using the Response Manager, you can instruct the RGS to return a proper response, a customized response, an application error (general, class-specific or one you create) or even drop the message.

Additional functionality allows a test engineer to create patterned response sets (for example, a couple of issueVoucher commands are processed successfully, and then an error is returned when the third one is received).

