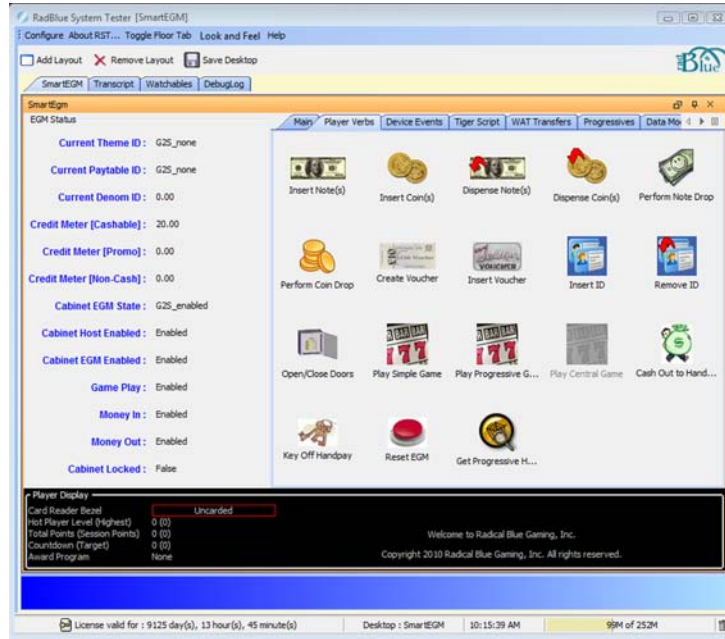




# System Tester

## What Is System Tester?

The RadBlue System Tester (RST) is the ultimate toolkit for G2S developers and testers. With the System Tester, you can perform individual G2S simulation tests as well as extended, customized testing.



From the SmartEGM layout, you can simulate EGM activity with the push of a button.

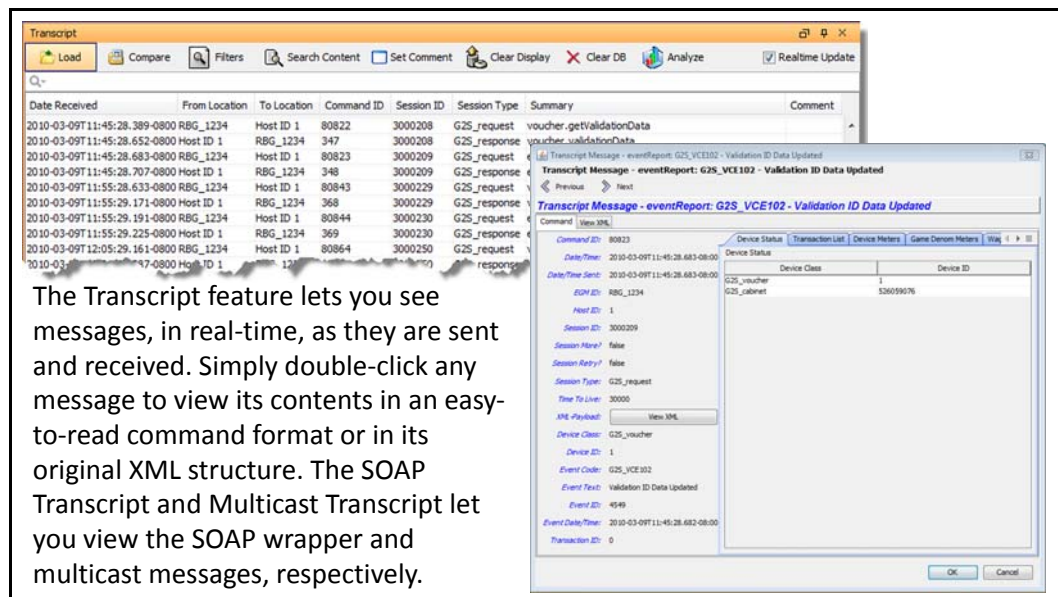
From the SmartEGM layout, you can:

**Send messages** that simulate human activity at the EGM or events that occur on EGM devices.

**Run scripts** to automate various testing scenarios and repetitive testing tasks. The SmartEGM's robust scripting ability allows you to automate the testing process and extend sequences of

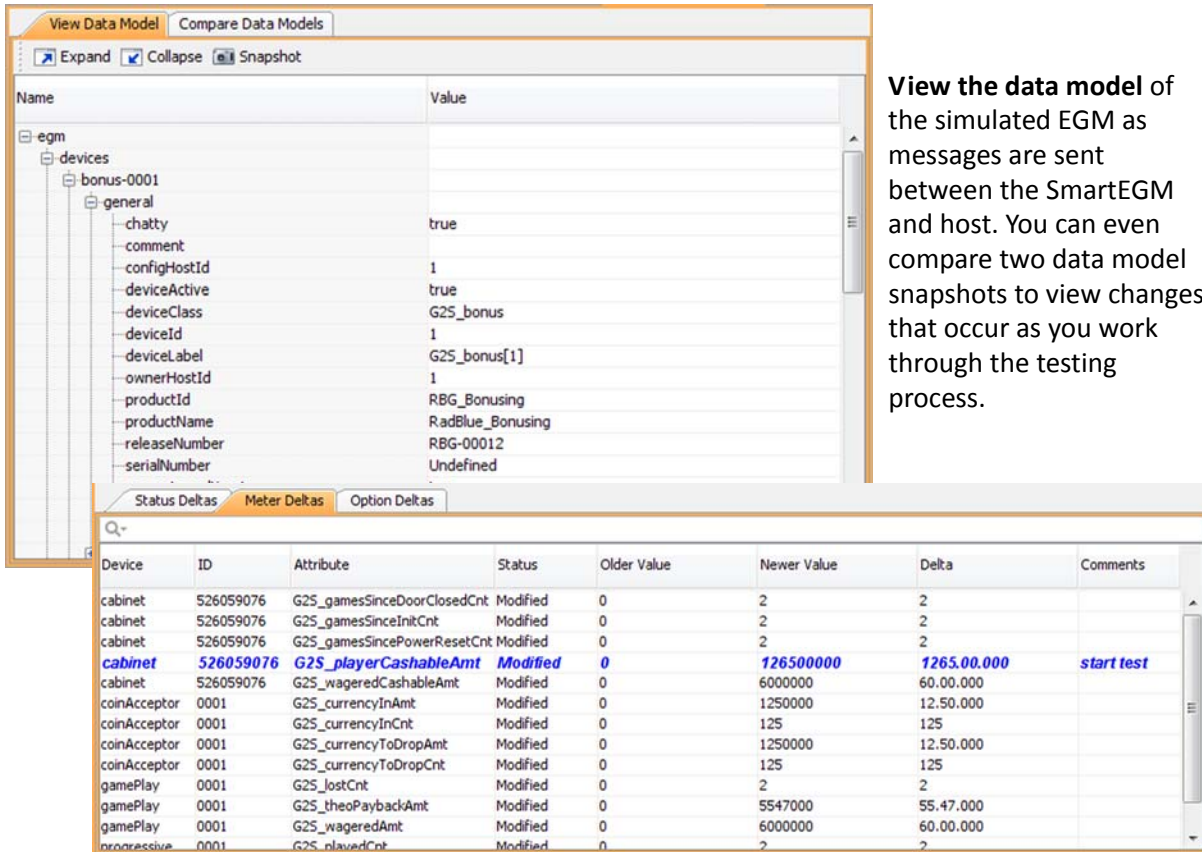
EGM-initiated commands. Scripts can be run for extended time periods, sending command after command from the EGM. This type of extensive testing is useful for detecting memory leaks and performing regression testing.

**Test and troubleshoot** G2S messages. Host commands update the EGM's data model, and the EGM acts on any well-formed G2S command sent by the host.



The Transcript feature lets you see messages, in real-time, as they are sent and received. Simply double-click any message to view its contents in an easy-to-read command format or in its original XML structure. The SOAP Transcript and Multicast Transcript let you view the SOAP wrapper and multicast messages, respectively.

For more information, contact Russ Ristine at: 775.329.0990 or Russ@RadBlue.com



The screenshot displays the 'View Data Model' window. On the left, a tree view shows the hierarchy: egm > devices > bonus-0001 > general. The right pane shows a list of attributes and their values for the selected device. Below this, the 'Option Deltas' tab is active, showing a table of attribute changes.

Device	ID	Attribute	Status	Older Value	Newer Value	Delta	Comments
cabinet	526059076	G25_gamesSinceDoorClosedCnt	Modified	0	2	2	
cabinet	526059076	G25_gamesSinceInikCnt	Modified	0	2	2	
cabinet	526059076	G25_gamesSincePowerResetCnt	Modified	0	2	2	
<b>cabinet</b>	<b>526059076</b>	<b>G25_playerCashableAmt</b>	<b>Modified</b>	<b>0</b>	<b>126500000</b>	<b>1265.00.000</b>	<b>start test</b>
cabinet	526059076	G25_wageredCashableAmt	Modified	0	6000000	60.00.000	
coinAcceptor	0001	G25_currencyInAmt	Modified	0	1250000	12.50.000	
coinAcceptor	0001	G25_currencyInCnt	Modified	0	125	125	
coinAcceptor	0001	G25_currencyToDropAmt	Modified	0	1250000	12.50.000	
coinAcceptor	0001	G25_currencyToDropCnt	Modified	0	125	125	
gamePlay	0001	G25_justCnt	Modified	0	2	2	
gamePlay	0001	G25_theoPaybackAmt	Modified	0	5547000	55.47.000	
gamePlay	0001	G25_wageredAmt	Modified	0	6000000	60.00.000	
progressive	0001	G25_playedCnt	Modified	0	2	2	

**View the data model** of the simulated EGM as messages are sent between the SmartEGM and host. You can even compare two data model snapshots to view changes that occur as you work through the testing process.

## What Do I Need to Get Started?

The minimum requirements for computers running the System Tester are:

- Operating System: Windows XP, Windows Vista, or Linux
- Memory: 256 MB
- Disk Space: 250 MB
- Processor: Intel 2.0 GHz or comparable
- Evaluation License from RadBlue to try out the product

For more information, contact Russ Ristine at: 775.329.0990 or [Russ@RadBlue.com](mailto:Russ@RadBlue.com)