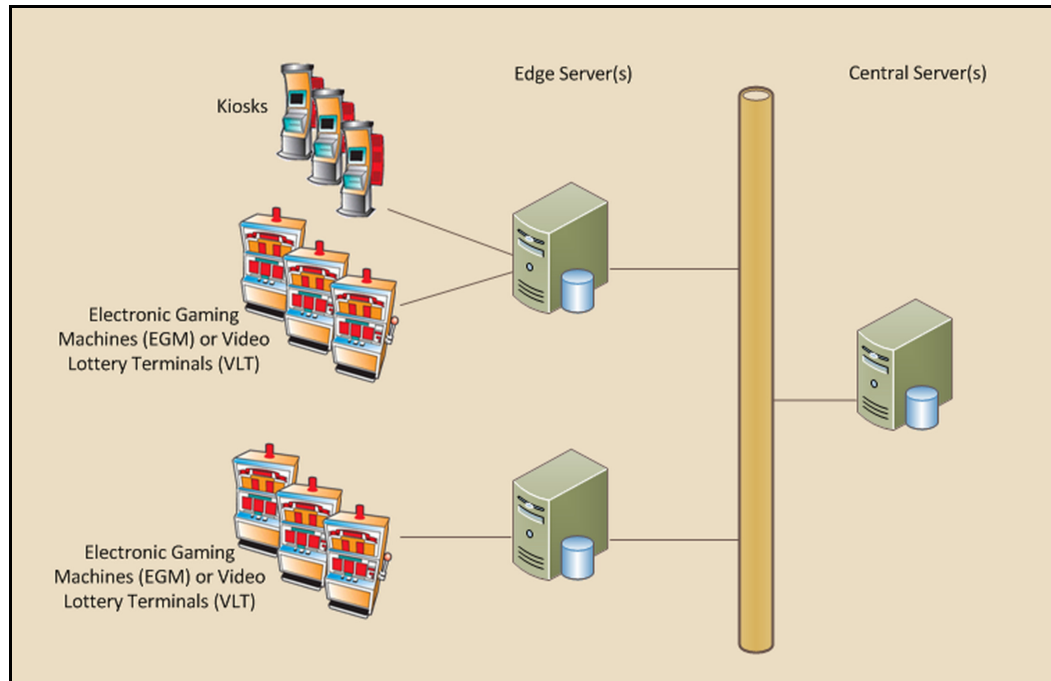


# S2S Simulator

## What Is the S2S Simulator?

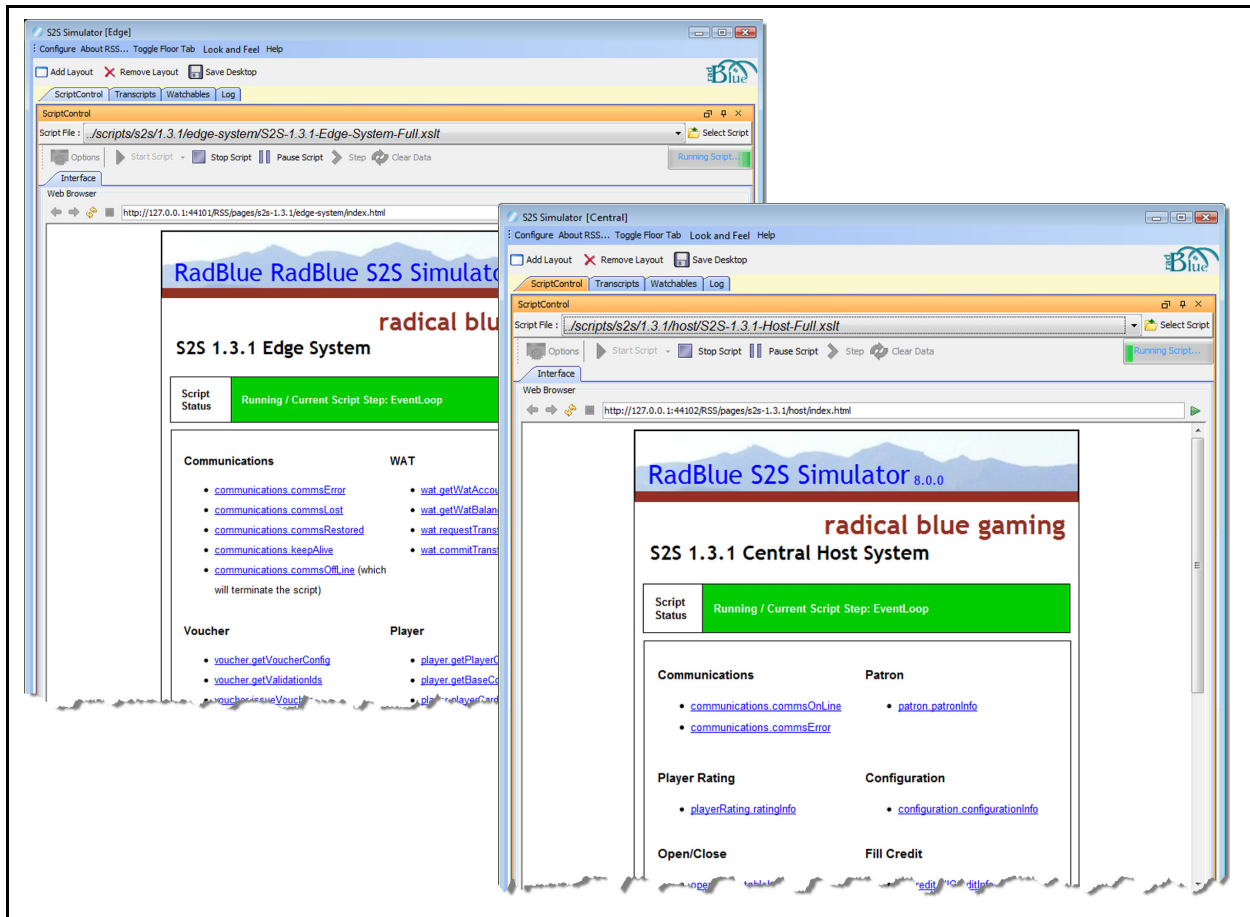
The RadBlue S2S Simulator (RSS) lets you simulate either endpoint for communications between a System to System (S2S) central host (Central) and another S2S server (Edge), which communicates with Electronic Gaming Machines (EGMs), Video Lottery Terminals (VLTs), and kiosks. You can generate any valid command in the implemented classes to stimulate the system under test.



Our handy Transcript, Log and Watchables features let you see messages as they are sent and received, research issues, and track specific messages and data. From the Transcript, you can drill down into the details of any message by double-clicking it.

*Just want to understand the S2S protocol better?* Use RSS in conjunction with the S2S protocol document to see the S2S protocol in action.

A separate instance of the Edge simulator and Central simulator are created automatically during the installation process. Simply double-click each desktop icon to launch the Edge and Central applications, click the Start Script button on each user interface, and away you go - instant S2S communications! Any command you send, automatically generates the associated response from the other endpoint.



## What Do I Need to Get Started?

The minimum requirements for computers running the S2S Simulator are:

- Operating System: Windows XP or Windows Vista
- Memory: 256 MB
- Disk Space: 250 MB
- Processor: Intel 2.0 GHz or comparable
- Evaluation License from RadBlue to try out the product

For more information, contact Russ Ristine at: 775.329.0990 or [Russ@RadBlue.com](mailto:Russ@RadBlue.com)