



RadBlue Protocol Analyzer Version 25

[Released: 05 DEC 2012]

Questions?

Log on to the RadBlue Forum: <http://radblue.mywowbb.com/>

Release Notes

Release Summary

For this release, we added schema support for G2S 2.1, updated the Java version requirement and made usability improvements.

For more information on the features and modifications discussed in this document, see the [RPA User Guide](#).

New Features

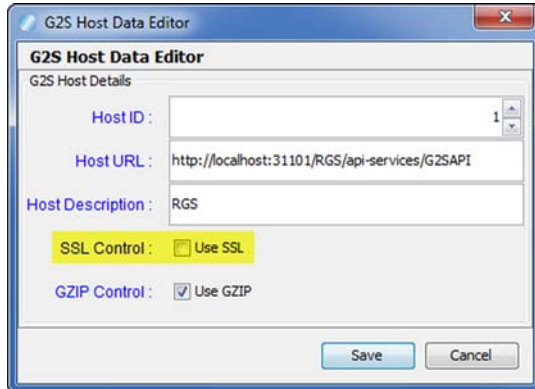
- For this release, we added schema support for G2S version 2.1, which means that this product will now use the G2S 2.1 schema by default. Since the G2S 2.1 schema is backwards compatible with G2S 1.1, this should be a non-issue for most people, but it lets us start adding in the new classes and functionality that are available in this new version of the protocol. You'll see these new G2S 2.1 features noted in the release notes with a ***New for 2.1!*** prefix.
- The **audit meters** and **communications** classes have been implemented in accordance with the 2.1 protocol. Additional classes will be implemented in subsequent releases.
- A list of all third-party software used by RadBlue and links to their licensing agreements has been added to the [Products](#) page of the RadBlue website.

Installation Modifications

- All RadBlue products now require **Java SE 7u7** or higher. If the installer cannot find this version on your computer, you are prompted to download and run the Java installer, or navigate to the correct Java version. Oracle moved to Java 7 nearly a year ago, so it is now stable enough that we are moving there as well. This should have minimal effect on your environment, but keeps our products on modern versions of the underlying technology.

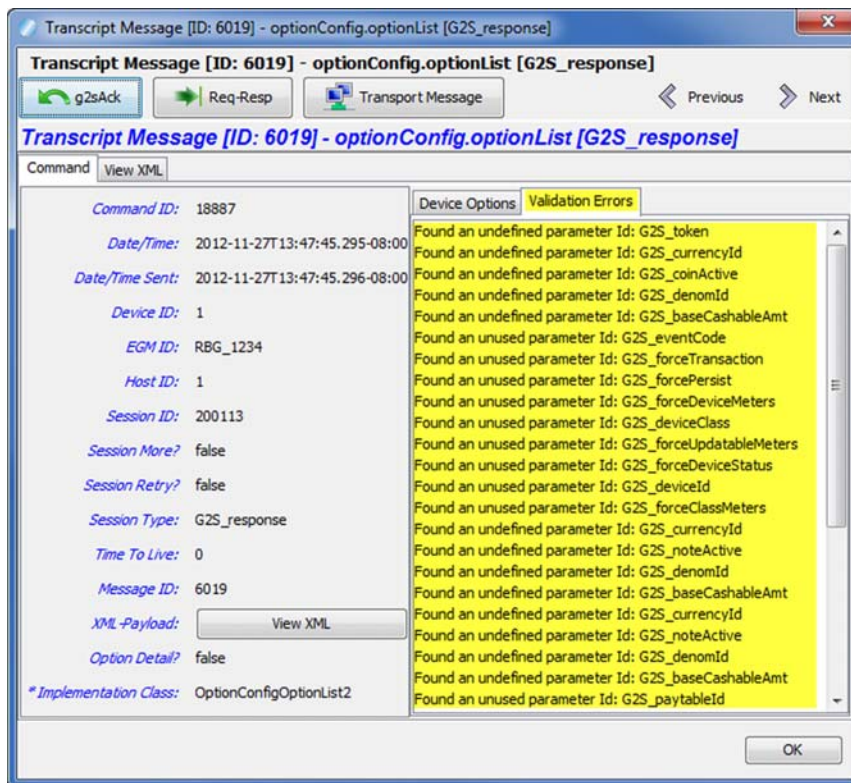
User Interface Modifications

- You must now select **SSL Control** to enable SSL for G2S Host Endpoints (**Tools > Configure > Engine Options > G2S Endpoints**). This field is no longer selected by default.



Transcript Modifications

- A **Validation Errors** tab that displays semantically incorrect `optionList` responses has been added to the `optionConfig.optionList` details screen in the Message Transcript. You can access the details screen by double-clicking the row in the Message Transcript for the message you want to view.





RadBlue Protocol Analyzer Version 24

[Released: 03 OCT 2012]

Questions?

Log on to the RadBlue Forum: <http://radblue.mywowbb.com/>

Release Notes

Release Summary

For this release, we updated the required Java version, made changes to the Advanced Transcript Analyzer and made usability improvements.

For more information on the features and modifications discussed in this document, see the [RPA User Guide](#).

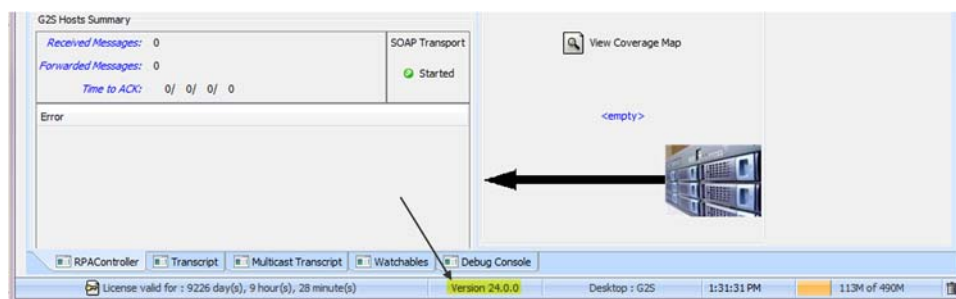
Installation Modifications

- **Java 1.6.0_33** is now required to run RadBlue products. If your computer does not have this version installed, you are prompted to download and run the Java installer, or to navigate to the correct Java version.



User Interface Modifications

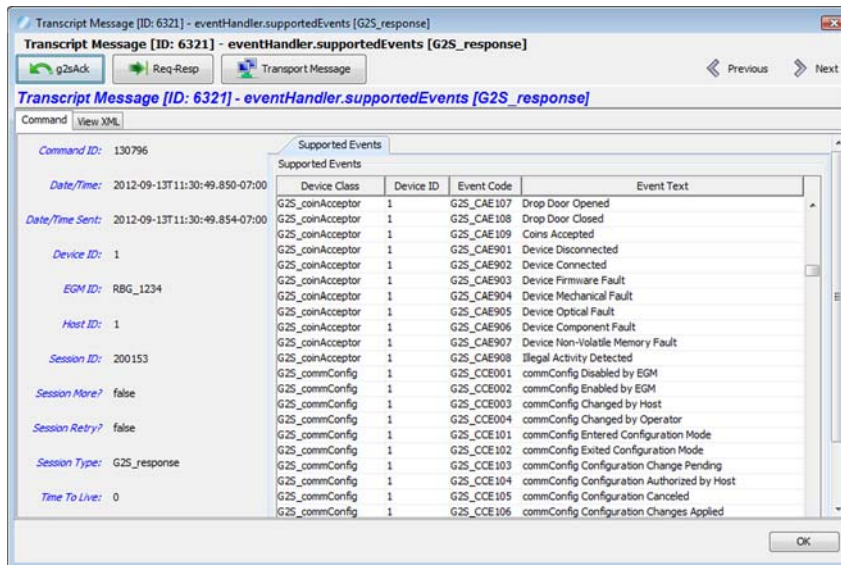
- The RPA version number is now located at the bottom of the RPA screen.



Transcript Modifications

- The **Debug Log** has been renamed to **Debug Console**.

- The **Supported Events** list in the detail command view of the `eventHandler.supportedEvents` command is now sorted alphabetically by Device Class, Device ID and then Event Code.



- Events and their associated data in the Advanced Transcript Analyzer have been updated for G2S 1.1.

The following G2S extensions had all events added to the Advanced Transcript Analyzer:

- ♦ 1a2
- ♦ 1e
- ♦ 1g1
- ♦ 1k1

The following events have been removed:

- ♦ G2S_CBE321
- ♦ G2S_CCE001
- ♦ G2S_CCE002
- ♦ G2S_OCE001
- ♦ G2S_OCE002

The following events have had their associated data updated:

Event	Modification
G2S_CBE005 - Host Changed Cabinet Config	Status added.
G2S_CBE006 - Operator Changed Cabinet Config	Status added.
G2S_CBE315 - Date/Time Changed	Status removed.
G2S_CBE317 - Power Off - Logic Door Open	Meters removed.
G2S_CBE318 - Power Off - Auxiliary Door Open	Meters removed.
G2S_CBE319 - Power Off - Cabinet Door Open	Meters removed.
G2S_CBE321 - Life-to-Date Meters Reset	Meters and Logs removed.
G2S_CBE322 - NVM Cleared	Meters, Logs and Status removed.
G2S_CCE003 - commConfig Changed by Host	Status added.
G2S_CCE004 - commConfig Changed by Operator	Status added.
G2S_OCE003 - optionConfig Configuration Changed by Host	Status added.
G2S_OCE004 - optionConfig Configuration Changed by Operator	Status added.
G2S_DLE005 - Device Configuration Changed by Host	Status added.
G2S_DLE006 - Device Configuration Changed at EGM	Status added.
G2S_JPE005 - Handpay Configuration Changed by Host	Status added.
G2S_JPE006 - Handpay Configuration Changed by Operator	Status added.
G2S_JPE103 - Remote Key-Off Initiated	Logs added.
G2S_CAE005 - Device Configuration Changed by Host	Status added.
G2S_CAE006 - Device Configuration Changed by Operator	Status added.
G2S_NAE005 - Device Configuration Changed by Host	Status added.
G2S_NAE006 - Device Configuration Changed by Operator	Status added.
G2S_NAE103 - Stacker Removed	Meters added; Status removed.
G2S_HPE005 - Device Configuration Changed by Host	Status added.
G2S_HPE006 - Device Configuration Changed by Operator	Status added.
G2S_NDE005 - Device Configuration Changed by Host	Status added.
G2S_NDE006 - Device Configuration Changed by Operator	Status added.
G2S_PTE005 - Printer Configuration Changed by Host	Status added.
G2S_PTE006 - Printer Configuration Changed by Operator	Status added.
G2S_PGE102 - Progressive Hit	Status removed.

Event	Modification
G2S_PGE104 - Progressive Committed	Meters added; Status removed.
G2S_IDE005 - Device Configuration Changed by Host	Status added.
G2S_IDE006 - Device Configuration Changed by Operator	Status added.
G2S_IDE107 - ID Validation Expired (ID Abandoned)	Status added.
G2S_BNE005 - Device Configuration Changed by Host	Status added.
G2S_BNE006 - Device Configuration Changed by Operator	Status added.
G2S_PRE005 - Player Device Configuration Changed by Host	Logs removed.
G2S_PRE006 - Player Device Configuration Changed by Operator	Logs removed.
G2S_PRE101 - Interval Rating	Logs added.
G2S_PRE111 - Player Carryover Set	Status removed.
G2S_PRE112 - Player Point Balance Set	Logs removed.
G2S_VCE005 - Voucher Configuration Changed by Host	Status added.
G2S_VCE006 - Voucher Configuration Changed by Operator	Status added.
G2S_WTE005 - WAT Configuration Changed by Host	Status added.
G2S_WTE006 - WAT Configuration Changed by Operator	Status added.
G2S_WTE101 - WAT Cash-Out to Host Disabled	Status added.
G2S_WTE102 - WAT Cash-Out to Host Enabled	Status added.
G2S_WTE109 - New Key Pair Established	Status added.
G2S_CLE005 - Central Device Configuration Changed by Host	Status added.
G2S_CLE006 - Central Device Configuration Changed by Operator	Status added.



RadBlue Protocol Analyzer Version 23

[Released: 08 AUG 2012]

Questions?

Log on to the RadBlue Forum: <http://radblue.mywowbb.com/>

Release Notes

Release Summary

For this release, we removed a configuration option, improved the Advanced Transcript Analyzer as well as the Advanced Transcript Analyzer Report, improved the Message Transcript and corrected a minor issue.

For more information on the features and modifications discussed in this document, see the [RPA User Guide](#).

Configuration Modifications

- The **Clear Transcript Messages on Startup** option, which cleared the transcript database each time RPA was launched, has been removed from the **Databases** tab on the Engine Options configuration screen (**Tools > Configure > Engine Options**). The tool adds a message ID to each message for sequences, so the database must always be cleared on startup.

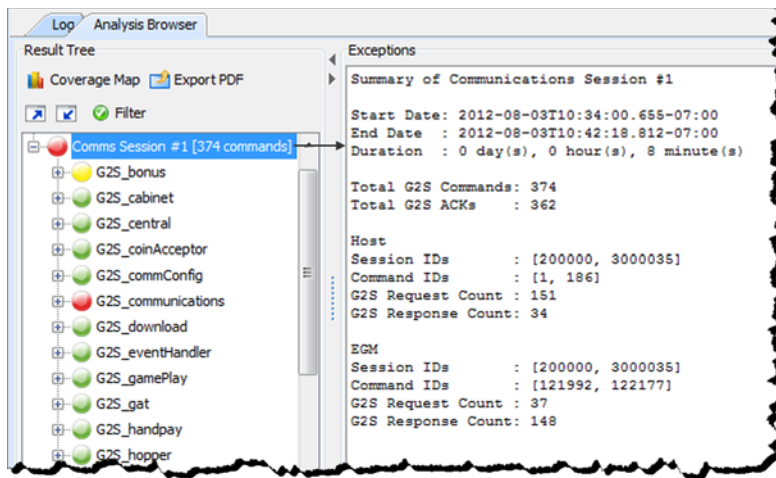
User Interface Modifications

- Previously, when the **Configure** button on the Edit Filter Set screen for the Disruptive Filters feature (S2S or G2S) was pressed, no action occurred. The Configure button launches the Filter Configuration screen as expected.

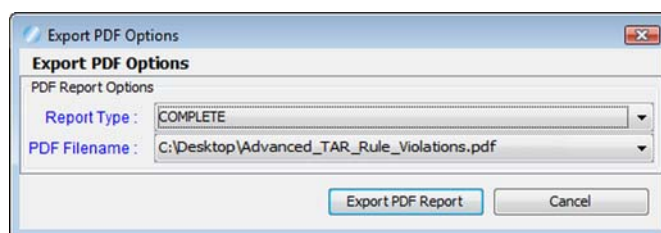
Transcript Modifications

- For G2S_GPE112 (Game Ended) events, the outcome of game play (the *playResult* attribute) is now shown in the Summary column, in brackets (for example, **eventReport:G2S_GPE112 - Game Ended [Lost]**), in the Message Transcript.
- A **Message ID** column has been added to the Message Transcript, displaying the unique identifier associated with each message.

- When you click to highlight a Comms Session on the **Advanced Transcript Analyzer**, a summary of that Comms Session now displays under Exceptions.



- You can now maximize and minimize the **Advanced Transcript Analyzer** window for improved viewing.
- The following changes have been made to the **Advanced Transcript Analysis Report**:
 - An issue in which the **Host ID** was always zero (0), has been corrected. The report now reflects the correct host identifier.
 - An issue in which only the first page of the report was generated has been corrected.
 - The report time span field no longer contains milliseconds.
 - You can now choose to generate a report with all errors, including duplicates (Complete), or with all errors, excluding duplicates (Summary). You can also define the filename and output location for the PDF file.





RadBlue Protocol Analyzer Version 22

[Released: 04 JUN 2012]

Questions?

Log on to the RadBlue Forum: <http://radblue.mywowbb.com/>

Release Notes

Release Summary

For this release, we removed the backup feature for student licenses of RPA, made improvements to the Message Transcript and added additional information to the Advanced Transcript Analysis Report

For more information on the features and modifications discussed in this document, see the [RPA User Guide](#).

Installation Modifications

- Backup files are no longer available for versions using student licenses. RPA student licenses use default files for upgrades.

User Interface Modifications




- The following changes have been made to the **Security Options** screen. You can access this screen by going to **Tools > Configure > Security Options**.
- ♦ A new **Certificates** tab contains all certificate configuration options. When you select a certificate option, that certificate type's information displays in the panel below the Certificate Method Request.

The screenshot shows the "Security Options" window with the "Certificates" tab selected. The "General" tab is also visible. The "Keystore" tab is not selected. The "Select Certificate Request Method" section has three radio buttons: "SCEP", "Manual" (which is selected), and "Self-Signing". Below this, the "Manual Certificate Signing Request Options" section contains several fields: "Entity Type" (set to "G2S Host"), "Common Name (CN)" (set to "1"), "Organizational Unit (OU)" (set to "G2S_host"), and "Key Size" (set to "1,024"). There is a "Create Signing Request" button. Below this, the "Import Certificate" section has a "Certificate Location" field and a "Browse" button, followed by an "Import Certificate" button. At the bottom, the "Certificate Status" section shows a progress bar at "0%" and a link to "Create a New Signing Request".

- ♦ The **Accept All Certificates** option has been moved from the **General** tab to the **Self-Signing** panel on the **Certificates** tab.
- ♦ The Third-Party certificate option has been renamed to **Manual**.

Transcript Modifications

- A **Compare** option has been added to the **Event Report** in the **Message Transcript** that lets you compare two event messages. In addition, a Message ID column and a Date Received column have been added to the Event Report
- A **Device** column has been added to the **Message Transcript** that displays the class and identifier of the device that the message is being sent to or from.
- A new **Export to Excel File** right-click option in the **Message Transcript** lets you quickly export the content of a G2S command to a Microsoft Excel spreadsheet. The following G2S commands can be exported to Excel:
 - ♦ `communications.descriptorList`
 - ♦ `eventHandler.eventSubList`
 - ♦ `eventHandler.setEventSub`
 - ♦ `eventHandler.supportedEvents`
 - ♦ `meters.meterInfo`
 - ♦ `optionConfig.optionList`
- **Host ID** and **Message ID** have been added to the **Advanced Transcript Analysis Report**

		Advanced Transcript Analysis Report	
Schema: G2S 1.1.0		Host ID: 1	EGM ID: RBG_1234
Data captured by RPA between: 2012-03-27 09:58:22 and 2012-03-27 10:00:20			
Comms Session #1 [480 commands]			
G2S_cabinet - G2S Message Errors			
Status	Message ID	Command ID	Description
	1934	N/A	Received a G2S ACK with the error code G2S_MSX004 [Failed to parse the G2S message]
G2S_cabinet - G2S Message Validation			
Status	Message ID	Command ID	Description
	N/A	N/A	Attribute 'g2s:sessionore' is not allowed to appear in element: 'g2s:cabinet'



RadBlue Protocol Analyzer Version 21

[Released: 04 APR 2012]

Questions?

Log on to the RadBlue Forum: <http://radblue.mywowbb.com/>

Release Notes

Release Summary

For this release, we improved RPA engine performance with a major tune-up and modified RPA to monitor up to five EGMs talking to five hosts (*G2S only*). In addition, we added several new configuration options, changed the required Java version and corrected minor issues.

For more information on the features and modifications discussed in this document, see the [RPA User Guide](#).

Installation Modifications

- RPA now requires **Java 1.6.0_31**. You are prompted to have the RPA installer automatically install this version of Java if it is not already running on your computer.

Functional Modifications

- SSL functionality, including the Security Options screen (**Tools > Configure**), is no longer available in the Student Edition of the tool.
- From the new Transcript Filters tab on the Engine Options configuration screen, you can filter the following commands from RPA transcripts:
 - ♦ **Filter G2S ACKs from Transcripts** - Select to filter `g2sack` commands from the Transcript database. If this option is selected, `g2sack` commands do not appear on the Message Transcript.
 - ♦ **Filter G2S Keep Alives from Transcript** - Select to filter `keepAlive` commands from the Transcript database. If this option is selected, `keepAlive` commands do not appear on the Message Transcript.
 - ♦ **Filter G2S Set Progressive Values from Transcript** - Select to filter `G2S setProgressiveValue` commands from the Transcript database. If this option is selected, `setProgressiveValue` commands do not appear on the Message Transcript.
 - ♦ **Filter Multicast G2S Bonus Activity from Transcript** - Select to filter `G2S bonus.bonusActivity` commands from the Message Transcript and Multicast Transcript if (and only if) the `bonus.bonusActivity` command is sent using multicast.
- You can now configure the **HTTP Connection Timeout** and **HTTP Receive Timeout** through the Transport tab on the Engine Option screen.
- RPA now prompts you to restart the tool when you make a change on the Security Options screen.

- An **Endpoints** (G2S or S2S) tab has been added to the Engine Options screen.
 - ♦ From the G2S Endpoints tab you can manage EGM and G2S host endpoints. An endpoint is the network location to which RPA forwards messages, defined by a URL. You must add G2S host endpoints, but EGM endpoints are added automatically as RPA receives `commsOnline` commands. RPA allows up to five (5) endpoints each for EGMs and G2S hosts.

You can edit the URL description and delete EGM endpoints as needed. G2S host endpoints can be added, edited or deleted. Inactive Timeout automatically deletes an EGM endpoint that has no activity after the defined time.

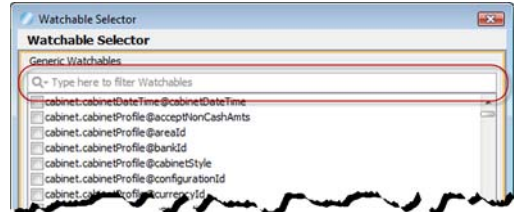
- ♦ From the S2S Endpoints tab you can manage S2S client and host endpoints. An endpoint is the network location to which RPA forwards messages, defined by a URL. Client and host endpoints are added automatically as RPA receives `commsOnline` commands. However, you can edit any endpoint as needed. RPA allows one endpoint each for S2S clients and hosts.

Engine Modifications

- An issue in which the **Approve All Certificates** option on the Security Options screen would not enable unless the common name was specified for all certificate types has been corrected.

User Interface Modifications

- A filter has been added to the **Watchable Selector** that lets you filter Watchable attributes quickly.
- The G2S desktop now loads by default. If you are using S2S with RPA, you must go to **Tools > Configure > Desktop Options**, and change the **Default Desktop** to S2S.



Transcript Modifications

- The following changes have been made to the **Advanced Transcript Analyzer**:
 - ♦ Processing has been improved to generate the Advanced Transcript Analyzer more quickly.
 - ♦ An error in which the Advance Transcript Analyzer mishandled the MSX004 - Malformed XML event has been corrected.
 - ♦ An issue that occurred when generating a PDF has been corrected.
 - ♦ The Advanced Transcript Analyzer now supports multiple hosts and EGMs.
- A **Host ID** selector has been added to the Message Transcript that allows you to filter the transcript by a specific host identifier or view all hosts. This option can be used with the EGM ID option to filter the Message Transcript by EGM and host.