



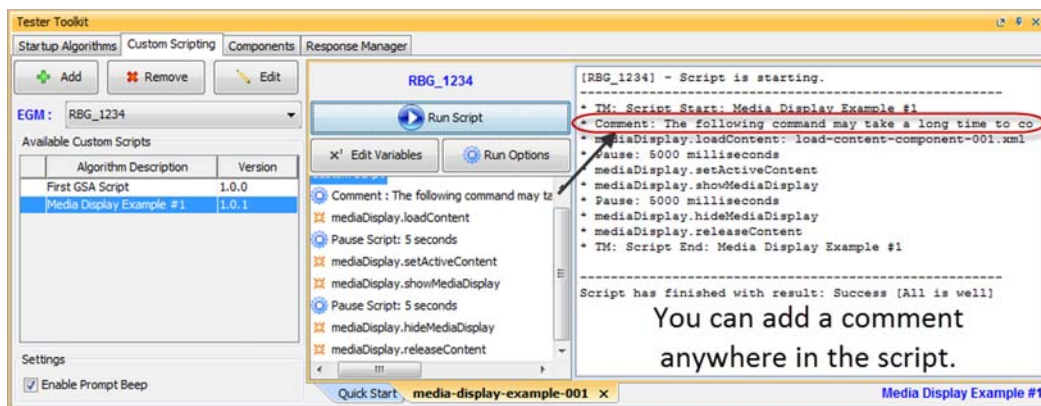
- The **Clear Transcript Messages on Startup** option, which cleared the transcript database each time RGS was launched, has been removed from the **Databases** tab on the Engine Options configuration screen (**Tools > Configure > Engine Options**). The tool adds a message ID to each message for sequences, so the database must always be cleared on startup.

## Engine Modifications

- In previous versions, wager category items in the **Data Model Viewer (DMV)** were split into two levels if the category name contained a period. RGS now treats wager category items as one item if there is a period in the category name.
- The RGS now automatically supplies values for `bonusId` and `loadContent.mdAccessToken` to ensure they are unique.

## Tester Toolkit Modifications

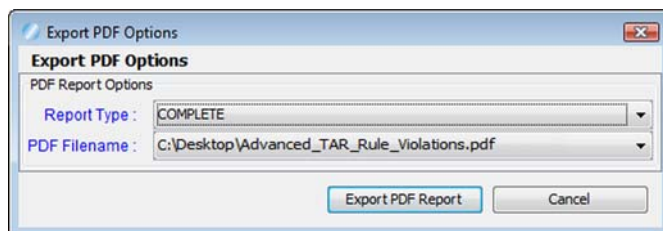
- A new **Comment** verb in Custom Scripting lets you add one or more comments to a custom script. You can add a comment anywhere within a script. The comment displays in the script viewer when you run the script.



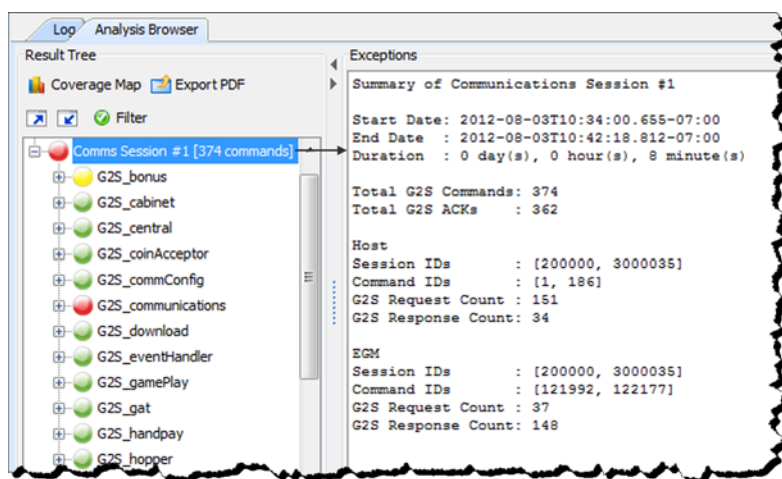
- The following commands have been added to Custom Scripting
  - ❏ `bonus.setBonusAward`
  - ❏ `mediaDisplay.hideMediaDisplay`
  - ❏ `mediaDisplay.loadContent`
  - ❏ `mediaDisplay.loadContentComponent`
  - ❏ `mediaDisplay.releaseContent`
  - ❏ `mediaDisplay.setActiveContent`
  - ❏ `mediaDisplay.showMediaDisplay`

## Transcript Modifications

- For G2S\_GPE112 (Game Ended) events, the outcome of game play (the *playResult* attribute) is now shown in the Summary column, in brackets (for example, **eventReport:G2S\_GPE112 - Game Ended [Lost]**), in the Message Transcript.
- A **Message ID** column has been added to the Message Transcript, displaying the unique identifier associated with each message.
- An issue in which you could not scroll up when navigating the **XML View** of the message details screen in the Message Transcript has been corrected. You can now scroll smoothly in either direction.
- The following changes have been made to the **Advanced Transcript Analysis Report**:
  - ❑ An issue in which the **Host ID** was always zero (0), has been corrected. The report now reflects the correct host identifier.
  - ❑ An issue in which only the first page of the report was generated has been corrected.
  - ❑ The report time span field no longer contains milliseconds.
  - ❑ You can now choose to generate a report with all errors, including duplicates (Complete), or with all errors, excluding duplicates (Summary). You can also define the filename and output location for the PDF file.



- When you click to highlight a Comms Session on the **Advanced Transcript Analyzer**, a summary of that Comms Session now displays under Exceptions.



- You can now maximize and minimize the **Advanced Transcript Analyzer** window for improved viewing.

## User Interface Modifications

- For `mediaDisplay`, RGS now keeps track of the active component ID/transaction ID pairs for each `mediaDisplay` device. So, in the Send Command layout, if you select a component ID, the transaction ID is automatically supplied
- The event subscription template is now only applied to selected devices in the `eventHandler.setEventSub` command screen (accessed through on the Send Command layout) and in the event subscription components.



# RadBlue G2S Scope Version 22

[Released: 04 JUN 2012]

Questions?

Log on to the RadBlue Forum: <http://radblue.mywowbb.com/>

## Release Notes

### Release Summary

For this release, we made enhancements to the Message Transcript, added wager category information to the data model viewer, modified the Security Options screen and corrected issues.

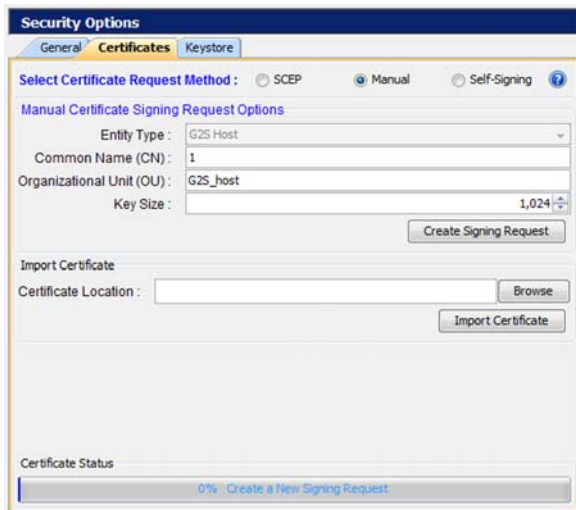
For more information on the features and modifications discussed in this document, see the [RGS User Guide](#).

### Engine Modifications

- An issue in which host initiated WAT transfers that requested non cashable credits to be transferred were mishandled by RGS has been corrected

### User Interface Modifications

- The fields in the `gat.getVerificationStatus` command, available through the Send Command, now default to the values from the last `gat.doVerification` command received by RGS.
- The following changes have been made to the **Security Options** screen. You can access this screen by going to **Tools > Configure > Security Options**.
  - ✧ A new **Certificates** tab contains all certificate configuration options. When you select a certificate option, that certificate type's information displays in the panel below the Certificate Method Request.



- ✘ The **Accept All Certificates** option has been moved from the **General** tab to the **Self-Signing** panel on the **Certificates** tab.
- ✘ The **Third Party** certificate option has been renamed to **Manual**.
- You can now view wager category information for each `gamePlay` device in the data model viewer:

Name	Value
eventHandler-0001	
gamePlay-0001	
game-denoms	
general	
guest-host	
meters	
options	
status	
supported-events	
wager-categories	
RBG_WagerCat1	
max-wager-credits	1000
min-wager-credits	1
theo-payback-pct	9245
wager-category-name	RBG_WagerCat1
win-levels	
gamePlay-0002	
gamePlay-0003	
gamePlay-0004	

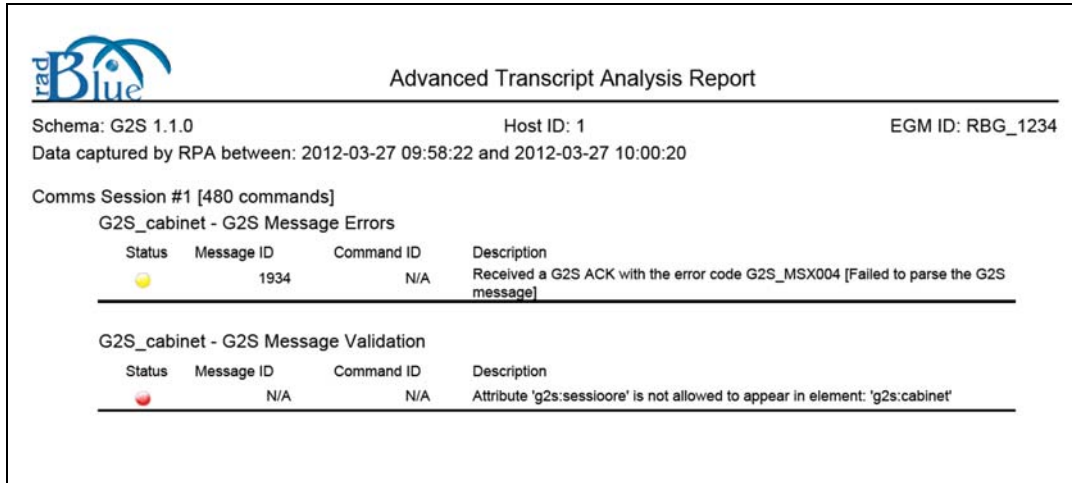
## Tester Toolkit Modifications

- An issue in which the `SBXstartup` algorithm did not run has been corrected
- An issue in which the `setEventHandlerState` command is sent after the startup algorithm completes has been corrected

## Transcript Modifications

- A new **Export to Excel File** right click option in the **Message Transcript** lets you quickly export the content of a G2S command to a Microsoft Excel spreadsheet. The following G2S commands can be exported to Excel:
  - ✘ `communications.descriptorList`
  - ✘ `eventHandler.eventSubList`
  - ✘ `eventHandler.setEventSub`
  - ✘ `eventHandler.supportedEvents`
  - ✘ `meters.meterInfo`
  - ✘ `optionConfig.optionList`
- A **Compare** option has been added to the **Event Report** in the **Message Transcript** that lets you compare two event messages. In addition, a **Message ID** column and a **Date Received** column have been added to the **Event Report**.
- A **Device** column has been added to the **Message Transcript** that displays the class and identifier of the device that the message is being sent to or from.

- An issue in which the **EGM Transcript Analysis Report** is not generating results has been corrected This report can be accessed through the Message Transcript by selecting **Analyze or Analyze > General**, if you are using the Advanced Transcript Analyzer.
- **Host ID** and **Message ID** have been added to the **Advanced Transcript Analysis Report**.




**Advanced Transcript Analysis Report**


Schema: G2S 1.1.0 Host ID: 1 EGM ID: RBG\_1234  
Data captured by RPA between: 2012-03-27 09:58:22 and 2012-03-27 10:00:20

Comms Session #1 [480 commands]

G2S\_cabinet - G2S Message Errors

Status	Message ID	Command ID	Description
	1934	N/A	Received a G2S ACK with the error code G2S_MSX004 [Failed to parse the G2S message]

G2S\_cabinet - G2S Message Validation

Status	Message ID	Command ID	Description
	N/A	N/A	Attribute 'g2s:sessionore' is not allowed to appear in element: 'g2s:cabinet'



# RadBlue G2S Scope Version 21

[Released: 04 APR 2012]

Questions?

Log on to the RadBlue Forum: <http://radblue.mywowbb.com/>

## Release Notes

### Release Summary

For this release, we updated the required Java version, improved the `setEventSub` command screen, made changes to the available communications options and improved the performance of the Advanced Transcript Analyzer.

For more information on the features and modifications discussed in this document, see the [RGS User Guide](#).

### Installation Modifications

- RGS now requires **Java 1.6.0\_31**. You are prompted to have the RGS installer automatically install this version of Java if it is not already running on your computer.

### Functional Modifications

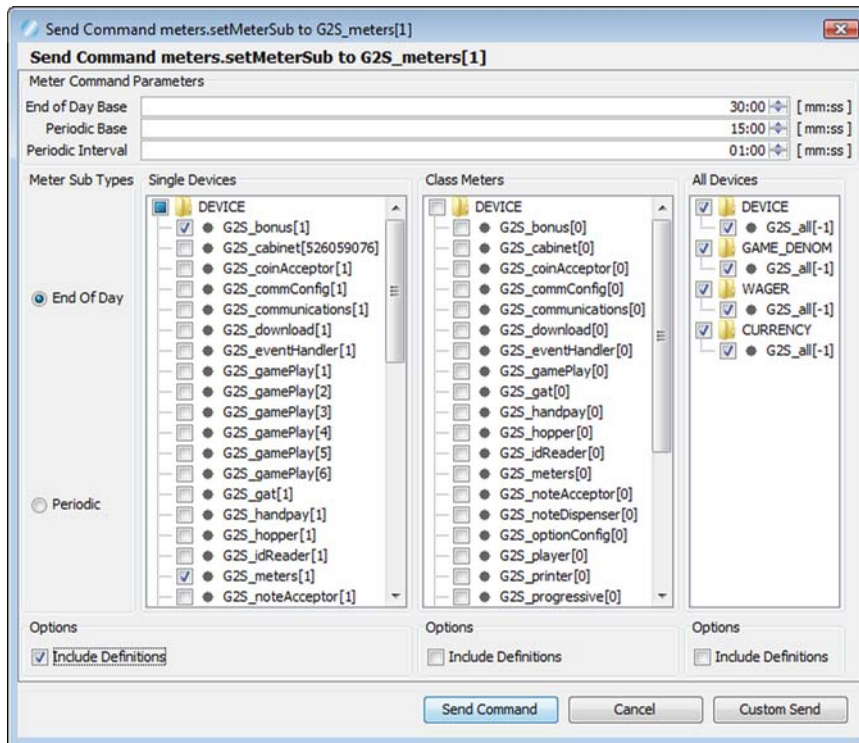
- SSL functionality, including the Security Options screen (**Tools > Configure**), is no longer configurable in the Student Edition of the tool, as it is required
- The following changes have been made to the **Communications** sub tab (available under **Tools > Configure > Engine Options > Messages**):
  - ✧ The Keep Alive Interval option is now only used by RGS versions without the Tester Toolkit module.
  - ✧ The Lost Comms Interval option has been removed. The RGS Lost Communication Timer is now automatically set to three times (3x) the `keepAlive` interval.

### User Interface Modifications

- An issue in which RGS started communications before the user interface was launched, causing abnormal interface behavior, has been corrected.



- The meter `.setMeterSub` command, available through the Send Command layout, has a new interface that lets you subscribe to a single device, class level meters or all devices, using the `-1` wildcard



## Tester Toolkit Modifications

- The `commConfig.authCommChange` and `optionConfig.authOptionChange` commands have been added to the Custom Scripting feature of the optional Tester Toolkit module.
- The following commands have been added to Custom Scripting
  - `authorizeOptionChange`
  - `authorizeCommChange`

## Transcript Modifications

- The following changes have been made to the Advanced Transcript Analyzer:
  - Processing has been improved to generate the Advanced Transcript Analyzer more quickly.
  - An error in which the Advance Transcript Analyzer mishandled the `MSX004 - Malformed XML` event has been corrected
  - An issue that occurred when generating a PDF has been corrected



# RadBlue G2S Scope Version 20

[Released: 06 FEB 2012]

Questions?

Log on to the RadBlue Forum: <http://radblue.mywowbb.com/>

## Release Notes

### Release Summary

For this release, we added a host identifier to the bottom of the RGS screen, added a new Set Option Change option to the Tester Toolkit's Components feature and made several enhancements and corrections.

For more information on the features and modifications discussed in this document, see the [RGS User Guide](#).

### Installation Modifications

- The two SWF files used with the `mediaDisplay` class are now available locally in a webserver in RGS rather than remotely. The file names are:
  - ✧ **PPmain\_test-2.swf** A sample SWF file that demonstrates a simple player interface.
  - ✧ **Asteroid\_blaster.swf** An asteroid game.

These files are used with the `mediaDisplay.loadContent` command

### Functional Modifications

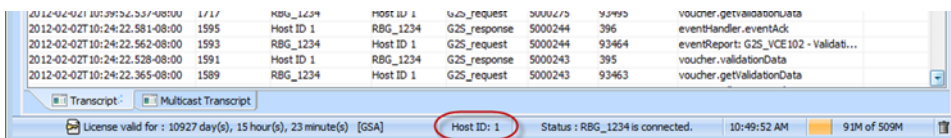
- All command attributes that can currently be saved as well as the Time To Live value on the Send Command layout are now saved for the *currently selected* EGM. Previously, saved values applied to *all* EGMs.
- A new option, **Set Option Change**, has been added to the Components feature of the optional Tester Toolkit module. This option lets you export `optionConfig.setOptionChange` commands from the Transcript into the Set Option Change component, which then become available for use in the Custom Scripting feature. You also have the option of editing the `setOptionChange` command's XML once it has been imported into the Set Option Change component.
- Previously, changes to the sync timer (**Tools > Configure > Engine Options > Message > Communications - Sync Timer**) required a restart of RGS. Now, any change to the sync timer take effect the next time a `commsOnline` command or a `commsDisabled` command is received by RGS.

## Engine Modifications

- An issue in which EGMIDs that used periods (for example, “RBG\_A.B.C.D”) were not being handled properly and caused the DMV to display data incorrectly, has been corrected
- In the RGS 19.0, the Set Option Change screen (either through Custom Scripting the Startup Algorithm or the Send Command) required the previously received `optionList` command to contain the parameter definitions as well as the parameters themselves. If the definitions were missing, the Set Option Change screen would not allow the user to access the associated `optionList`. Now, missing definitions are silently ignored and the Set Option Change screen functions correctly regardless of whether parameter definitions are received
- An issue in which RGS was not handling UTF 8 encoding properly has been corrected
- An issue in which errors were generated when the `gat.doVerification` command is sent if there was no GAT device has been corrected
- An issue in which an error occurred when authorizing large `setOptionChange` commands has been corrected
- A performance issue that appeared in RGS 19 when under heavy load has been resolved. If you notice additional performance issues, please [contact RadBlue](#).

## User Interface Modifications

- You can now add multiple components to the `gat.doVerification` command through the user interface (**Send Command > G2S\_gat > doVerification > Verify Components > Add**). Previously, if you wanted to add multiple components, you had to use the Custom Send feature.
- Previously, the **persist** and **sendClassMeters** were not included in the event subscriptions for the startup algorithm by default. Now, the **persist** and **sendClassMeters** are selected, by default, for all events.
- An issue in which the `cabinet.setCabinetLockOut` command failed when the **Lock Time Out** field was set to zero(0) because the message failed validation and was not sent by RGS has been corrected. Now, the **Lock Time Out** field cannot be set to a value less than one (1).
- The **Custom Send** option on the Send Command layout now uses the **Time To Live** value, located on the Send Command layout (above the Available Commands list).
- Two erroneously placed check boxes have been removed from the `eventHandler.getEventSub` screen.
- The current RGS host identifier is now located on the status bar at the bottom of the interface.



## Tester Toolkit Modifications

- RGS now only sends events in the `setEventSub` command (configured in the Event Subscription component; sent through Custom Scripting) that are supported by the EGM, including custom events. If the EGM does *not* support a particular event, it is discarded before the `setEventSub` command is sent.
- You can now run one Custom Script at a time *only*.
- The `getOptionList` command in Custom Scripting now supports all of the attributes that are supported in the `getOptionList` command available on the Send Command layout.

## Transcript Modifications

- In the Transcript command view, the **G2S\_avgPaybackPct** meter now displays as a percentage rather than as a whole number.