



What Is the G2S Scope?

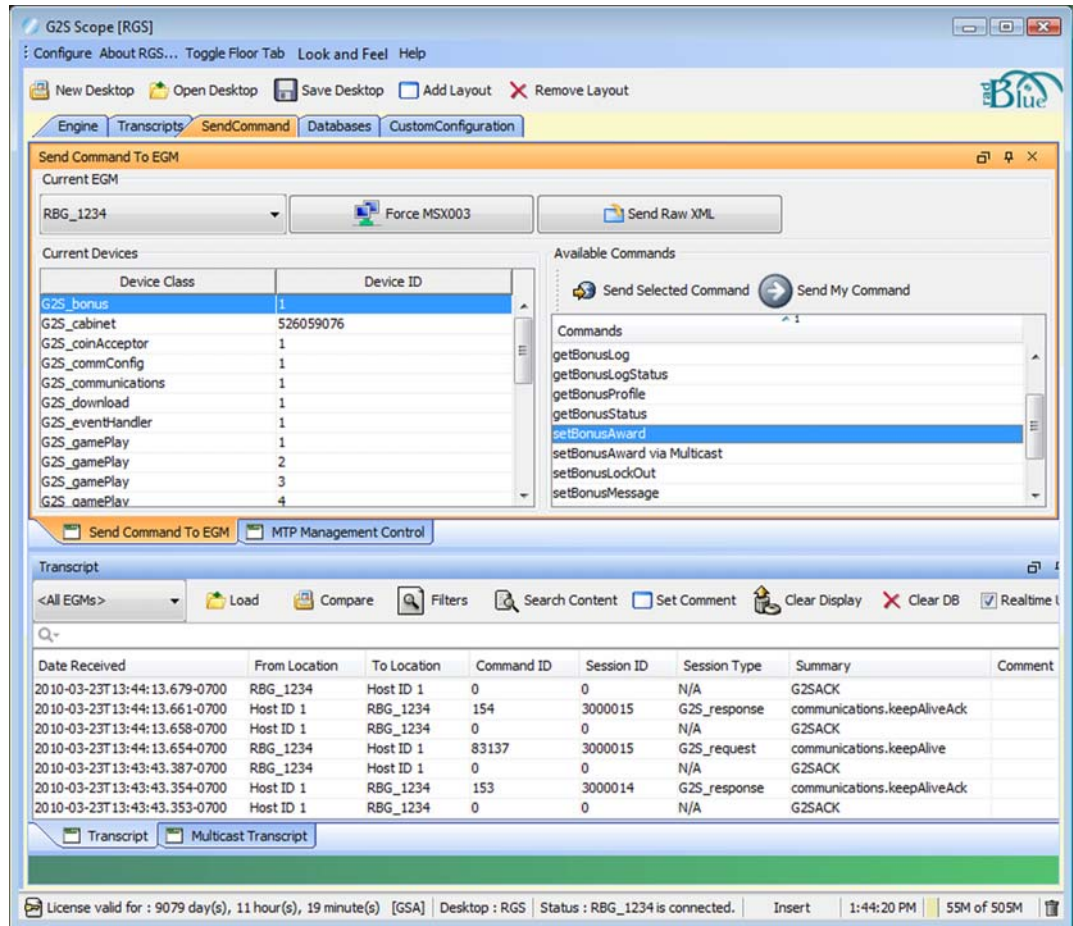
The RadBlue G2S Scope (RGS) is an EGM development tool in which RGS acts as a single G2S host for up to five EGMs. It is designed to be used as a bench tool for EGM developers. An optional Custom Configuration module is available to extend your testing with custom startup algorithms, scripting and custom response messages.

Send and Receive G2S Commands

The **Send Command** function sends G2S commands, one at a time, to an EGM. You can configure all command attributes prior to sending each command.

To send a command to an EGM, simply select the device and the command you want to send. Once you select a command, you can configure the command attributes as needed to facilitate testing.

From the MTP Management Control screen, you can manage multicast groups that are used in sending multicast messages.



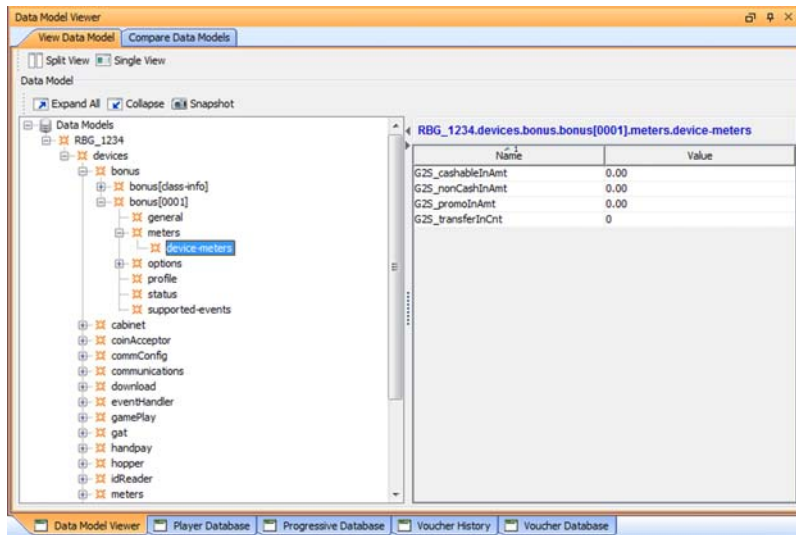
For more information, contact Russ Ristine at: 775.329.0990 or Russ@RadBlue.com

View, Search and Sort G2S Messages

All RGS activity appears in the **Transcript** at the bottom of the screen, so you can see flow of messages and dig into the details as needed. The G2S Scope lets you analyze EGM responses to the commands you send by presenting responses in an easy-to-use command form as well as the original XML form.

With G2S Scope filtering options, getting the information you need is easy. You can choose to view an entire message transcript, all responses to certain commands, or just select responses. Various views and sort options allow you to verify message content and troubleshoot implementation issues.

View and Compare EGM Data Model Changes

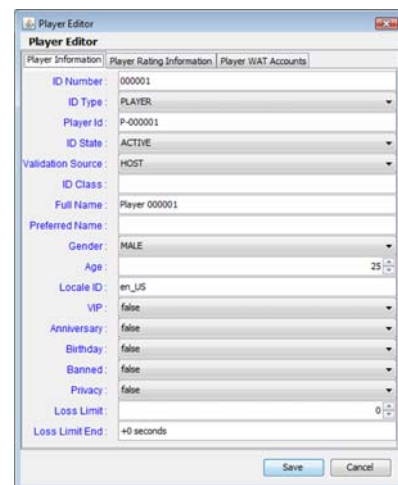


In addition to message responses, the **Data Model Viewer** lets you see the current data model. Using a tree-structure control, you can quickly drill-down to the attribute(s) or information you want to view. As you test, you can take snapshots of the data model for easy comparison of any two snapshots.

Once you have filtered and sorted the data as needed, you can print the comparison as a report.

Manage Vouchers, Players, WAT and Progressives

From the Databases screen, you can manage player accounts (including WAT) and progressives. Our user-friendly interface lets you easily add, edit and delete individual player accounts and configure progressives. From the Voucher Database, you can add, delete and unassign groups of vouchers in addition to being able to add, edit and delete them individually. The Voucher History screen lets you see the status of each voucher as it moves through the redemption process.



What Do I Need to Get Started?

The minimum requirements for computers running the G2S Scope are:

- Operating System: Windows XP, Windows Vista, or Linux
- Memory: 512 MB
- Disk Space: 250 MB
- Processor: Intel 2.8 GHz or comparable
- Evaluation License from RadBlue to try out the product

For more information, contact Russ Ristine at: 775.329.0990 or Russ@RadBlue.com