



# RadBlue Protocol Analyzer Version 6

[Released: 09 DEC 2009]

Questions?

Log on to the RadBlue Forum: <http://radblue.mywowbb.com/>

## Release Notes

### Release Summary

In this release, we added support for multicast command, updated the installer, and made usability improvements.

### New Features

- RPA now supports multicast commands.

RPA listens for a `joinMcast` command from the host and starts a new multicast endpoint listener (if one does not already exist). Otherwise, RPA updates the security parameters of the existing listener (the same as an `mcastKeyUpdate` command would).

Multicast messages from the host are now received by RPA and displayed in the Multicast Transcript Control.

Note that the `leaveMcast` command is not handled in the current design. The listeners are persisted, and the only way to stop and clear the listeners is to click the **Clear Multicast Listeners** button on the Multicast Transcript Control panel.

---

### Improvements

- The Compare option has been enhanced to highlight differences in the two messages being compared.
- The RPA installer has been updated.
- If RPA does not get permission from the computer's firewall to open a webserver socket, it now tries again after 15 seconds and an error is logged.
- The layout for the **Selected EGM** and **Active Filter Set** fields have been reworked to better accommodate the field titles.
- The Transcript has been modified for improved record processing performance.

### Corrections

- The Transcript has been updated to display the correct To Location and From Location for multicast messages.



# RadBlue Protocol Analyzer Version 5.0

[Released: 04 NOV 2009]

Questions?

Log on to the RadBlue Forum: <http://radblue.mywowbb.com/>

## Release Notes

### Release Summary

In this release, we've made several improvements, including enhancing the Command Coverage Map and updates to the Engine Options screen.

### Improvements

- The Command Coverage Map now preloads all of the commands with an initial value of zero. The zero values now have a color of red. A new Quick Filter option allows you to quickly filter the list, so RPA only displays the commands you are interested in. In addition, the Command Coverage Map now includes `eventReport` commands.

Command Name	Count
download.packageLogStatus	3
download.packageStatus	0
download.packageStatusAck	0
download.readPackageContents	0
download.scriptList	3
download.scriptLogList	3
download.scriptLogStatus	3
download.scriptStatus	0
download.scriptStatusAck	0
download.setDownloadState	3
download.setScript	0
download.uploadPackage	0
eventHandler.clearEventSub	0
eventHandler.clearEventSubAck	0
eventHandler.error	0
eventHandler.eventAck	22
eventHandler.eventHandlerLogList	3
eventHandler.eventHandlerLogStatus	3
eventHandler.eventHandlerProfile	3

- The Engine Options screen on the Configure menu has been updated with consistent wording and a more user-friendly option order.
- RPA now monitors up to five EGMs communicating to a single G2S host
- You can now configure interactive filters before the target command arrives.
- The **Add Valid Attribute** filter now lets you specify the both the namespace and attribute to the message.

- The **Add Valid Element** filter now lets you specify the both the namespace and element to the message.
- On a new installation, RPA was using “localhost” for the EGM location in the commsOnline. Now, the installation uses the IP address identified under Engine Options, on the RPA Configuration screen.
- **Event Data Filter** - You can now choose to filter all associated data (ALL\_DATA) or specific associated data in an eventReport command.
- **Edit Message Filter** - You can now hand edit the selected message to test your own ideas for message disruption.
- The **Set Comment** option on the Transcript Control now lets you change, append and delete existing comments.
- A **Realtime Update** option has been added to the Automatic Filter log. By default, this option is selected. The log is cleared on restart.

## Corrections

- The **To Location** and **From Location** for the g2sAck command on the Transcript has been modified to correctly report the information in these fields.



# RadBlue Protocol Analyzer Version 4.0

[Released: 06 OCT 2009]

Questions?

Log on to the RadBlue Forum: <http://radblue.mywowbb.com/>

## Release Notes

### Release Summary

There is no release for RPA version 4.0.



# RadBlue Protocol Analyzer Version 3.0

[Released: 01 SEP 2009]

Questions?

Log on to the RadBlue Forum: <http://radblue.mywowbb.com/>

## Release Notes

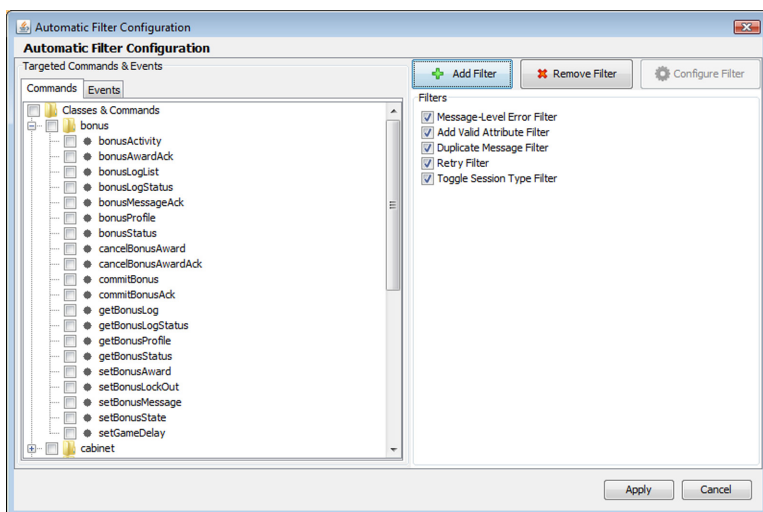
### Release Summary

In this release, we added automatic filters, a new Event Data filter and made several improvements to make using RPA easier.

### New Features

- Automatic filters have been added to RPA. Automatic filters, once configured, automatically filter the specified commands and events as messages are received by RPA. Available automatic filters include:

Add Valid Attribute	Duplicate Messages	Resend
Add Valid Element	Event Data	Retry
Application-Level Error	Message Delay	Toggle Session Type
Change Host ID/EGM ID	Message-Level Error	



All automatic filters have a hit percentage option that lets you define what percentage of each specified command or event received by RPA should be affected by the filter. This percentage can be defined for each filter. RPA randomly chooses a filter; The hit percentage then

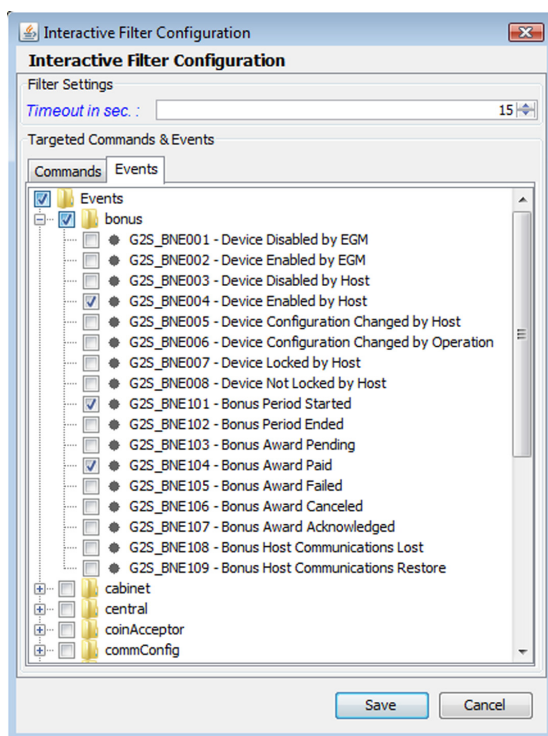
determines how often the filter, once selected, actually affects the message. For example, if you use five filters, each is selected 20% of the time. If the hit percentage of the selected filter is five percent, when selected, this filter affects five percent of the messages it encounters.

Automatic filters may be applied to any command or event

For more information, see the [RPA User Guide](#).

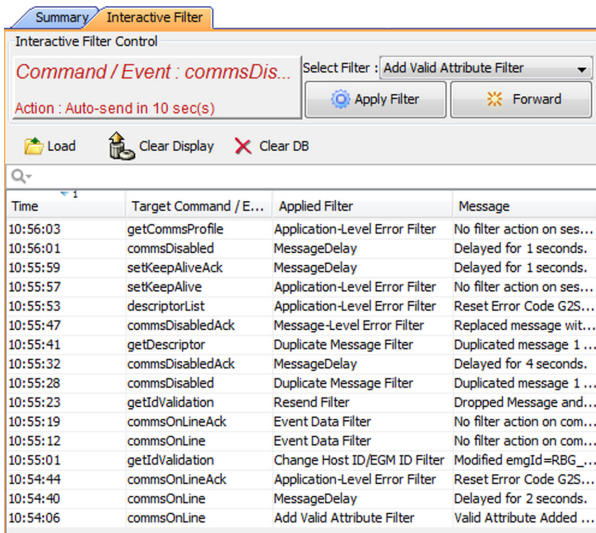
## Improvements

- The **Realtime Update** option in the transcript is now selected by default
- You can now use license files with or without the MAC address in the file name.
- The **Clear Database on Startup** engine configuration option now applies to the Automatic Filter and Interactive Filter logs. If this option is selected, the interactive filter and automatic filter databases, which populates the Interactive Filter and Automatic Filter logs, are automatically cleared each time RPA is started.
- An **Event Data filter** has been added to interactive filters. This filter lets you remove associated data from specified eventReport commands.
- The Filter Set Schema on the Edit Filter Set screen now defaults to the schema selected on the **Configure > Engine Options** screen *or* the previously saved value.
- The IGT City Center protocol extensions, which were gifted to GSA, are now available for use as the **g2s-1.0.3-igt[IGT]** schema. You can set the schema through the Edit Filter Set screen.
- Events have been added to the Interactive Filter Configuration screen.

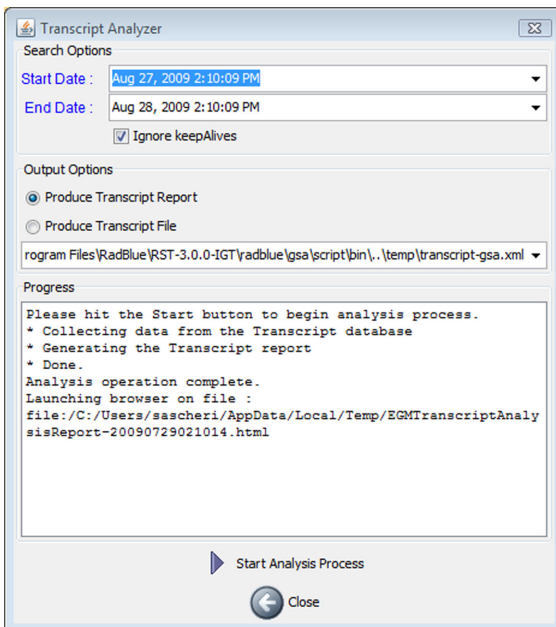


Click the **Events** tab, and select the events you want to filter.

- The Interactive Filter and Automatic Filter logs are now written to a database (similar to the Transcript Control).



- ♦ **Load** - Click to load filtered messages from the database so you can work with them through the user interface.
  - ♦ **Clear Display** - Click to clear the currently displayed filtered commands.
  - ♦ **Clear DB** - Click to remove all records from the Interactive Filter database.
  - ♦ **Quick Search** - Type a keyword on which to automatically filter log content. Click the magnifying glass to select additional filter criteria.
- The Progress section on the Transcript Analysis report's Transcript Analyzer screen has been expanded to include report generation information.



## Corrections

- The **From Location** and **To Location** columns now display the actual source and destination for both request and response messages in the Transcript Control.
- In the previous release, S2S commands were not working in RPA. RPA now handles S2S commands properly.





# RadBlue Protocol Analyzer Version 2.0

[Released: 03 AUG 2009]

Questions?

Log on to the RadBlue Forum: <http://radblue.mywowbb.com/>

## Release Notes

### Release Summary

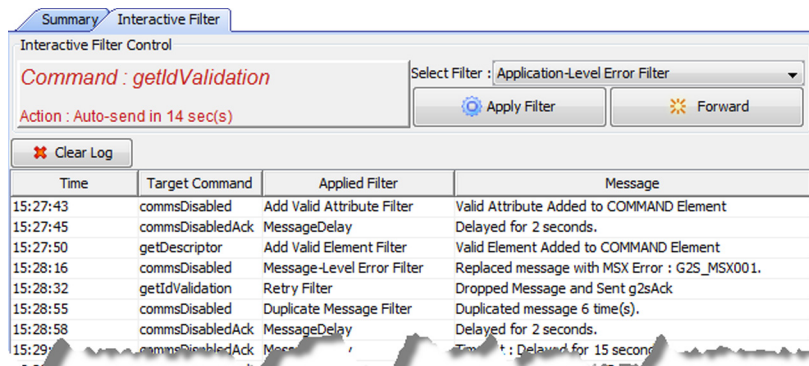
In this release, we have made significant changes to the optional Disruptive Filter features. In addition, we have changed the way RPA is versioned. The first digit of the version number will increment each month (for example, this month is 2.0 and next month will be 3.0).

### New Features

- A **Help** option has been added to the RPA application.

### Improvements

- For ease-of-use, the disruptive filters feature has been reworked. There are now two types of disruptive filters: interactive and automatic. The current filter set contains *interactive filters only*.



Interactive filters, once configured, require manual handling of the selected command(s). In addition, the commsOnline filter causes response commands to be routed through RPA.

The following interactive disruptive filters are currently available in RPA:

- ♦ **Add Valid Attribute Filter (G2S)** - You specify the location within the message (g2sBody, g2sMessage, class, command and sub-element), and RPA supplies the added data.
- ♦ **Add Valid Element Filter (G2S)** - You specify the location within the message (g2sBody, g2sMessage, class, command and sub-element), and RPA supplies the added data.
- ♦ **Application-Level Error Filter (G2S)** - You select an application-level or command class error from a list. The error replaces the response and RPA forwards it to the intended recipient. The response may originate from an EGM or a host.

- ♦ **Change Host ID/EGM ID Filter (G2S)** - This filter lets you modify the host ID and/or EGM ID within a message, which tests whether the target entity validates these attributes for each received message.
- ♦ **Duplicate Message Filter (G2S)** - This filter duplicates a message from one to 10 times.
- ♦ **Message Delay Filter (G2S)** - Messages are delayed while waiting for user input. You can delay a message by forwarding it to its destination without any changes. Messages that are not acted upon within a user-specified amount of time are automatically forwarded to the target entity.
- ♦ **Message-Level Error Filter (G2S)** - Select a message-level error from list. The error replaces the g2sAck to the originator, and the original message is not forwarded to the recipient.
- ♦ **Resend Filter (G2S)** - The resend filter drops the specified message without sending a g2sAck to the originator (so the originator realizes the message was lost).
- ♦ **Retry Filter (G2S)** - The retry filter drops the specified message, but sends a g2sAck to the originator (so the originator thinks the message was sent successfully, but then times out when the response message is not received).
- ♦ **Toggle Session Type Filter (G2S)** - This filter changes the sessionType attribute for the specified message. You can replace the session type with valid data (for example, change "request" to "notification") or replace the session type with invalid data.

For more information on Interactive Disruptive filters, see the [Protocol Analyzer User Guide](#).

- The summary panel now displays an informational message if RPA has not been started.
- License information has been added to the bottom of the user interface.
- You are now prompted to restart the RPA application if the following configuration parameters are changed:

#### **Desktop Options**

- i. Data Management Parameter

#### **Engine Options**

- i. IP Address and SOAP Port
- ii. Protocol Options
- iii. Transcript
- iv. Filter G2S Set Progressive Values from Transcript
- v. Derby Port

#### **Security Options**

- i. All parameters

## **Corrections**

- The Transcript now correctly compares the two selected messages regardless of the current sort view.



# RadBlue Protocol Analyzer

## Version 1.14

[Released: 29 JUN 2009]

Questions?

Log on to the RadBlue Forum: <http://radblue.mywowbb.com/>

# Release Notes

## Release Summary

In this release, we added support for disruptive filtering of commands. In addition, we added a mechanism to ensure stronger encryption ciphers are used and the ability to compare the XML view of two commands in the transcript.

## New Features

- Support for disruptive filters has been added to RPA. This optional new feature lets you manipulate commands received by RPA to test system and EGM functionality. All supported commands are available for filtering.

We will be releasing filter functionality in *filter sets*, which are simply groups of filters. The first filter set, available for version 1.14, contains the following filters:

- ♦ **Drop Messages Filter (G2S)** - An automatic filter that randomly drops a percentage of commands. You can specify the command, the drop percentage, whether to drop the command, and whether to drop its acknowledgement.
- ♦ **Message Delay Filter (G2S)** - Holds selected commands for a random amount of time (within a range that you define) before forwarding to the message target.
- ♦ **User Action Filter (G2S)** - An interactive filter that holds specific commands until you take one of three actions: send the message to the target system, drop the message and send a G2S acknowledgement (retry test), or drop the command and *do not* send a G2S acknowledgement (resend test).

For more information, see the [RPA User Guide](#).

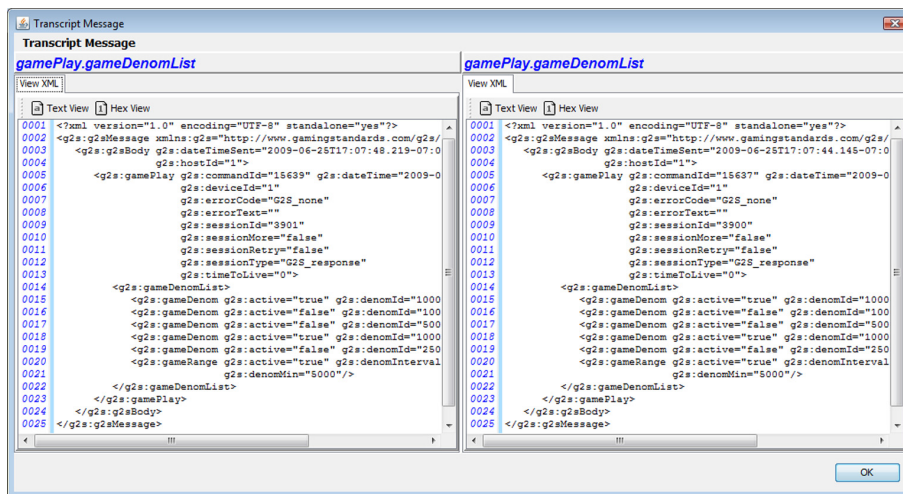
## Improvements

- RPA can now force stronger encryption ciphers first in its cipher list. However, host systems must also support this methodology for that feature to work.

To use stronger encryption ciphers, you must take the following steps:

- i. Go to: <http://java.sun.com/javase/downloads/index.jsp>
- ii. Scroll down to the **Additional Resources > Other Downloads**.
- iii. Download **Java Cryptography Extension (JCE) Unlimited Strength Jurisdiction Policy Files 6**.
- iv. Follow the installation instructions in the README document, located in the download's .zip file.

- The **Initial Desktop Setup** screen has been removed, so you will no longer be asked to select a desktop before RPA launches.
- The debug log level in logger-handler has been changed from INFO to DEBUG for messages related to the handling of each message.
- The Time in Milliseconds text has been moved to above the summary sections, and now reads: **All Times in ms (Min/Avg/Max/Last)**
- Event report command entries in the transcript now include the description associated with the event (for example: **eventReport:G2S\_EHE101 Event Subscription Changed**).
- You can now compare the details of two commands in the transcript.



To use the compare feature:

- i. Hold down **CTRL** and click the commands you want to view.
- ii. Click **Compare**.

At this time, the Compare feature should not be used while transcript content is filtered.

## Corrections

- The command summary in the transcript is now calculated correctly when the XML does not include the namespace prefix.



# RadBlue Protocol Analyzer Version 1.13

[Released: 01 JUN 2009]

Questions?

Log on to the RadBlue Forum: <http://radblue.mywowbb.com/>

## Release Notes

### Release Summary

There are no changes to RPA for release 1.3.



# RadBlue Protocol Analyzer Version 1.12

[Released: 29 APR 2009]

Questions?

Log on to the RadBlue Forum: <http://radblue.mywowbb.com/>

## Release Notes

### Release Summary

There are no changes to RPA for release 1.12.



# RadBlue Protocol Analyzer

## Version 1.11

[Released: 30 MAR 2009]

Questions?

Log on to the RadBlue Forum: <http://radblue.mywowbb.com/>

# Release Notes

## Release Summary

In this release, we addressed general usability issues.

## Improvements

- The date and time for an error entry has been moved to a new line, so it no longer overwrites the command information if the screen is resized smaller than the default.
- The Clear All button has been renamed **Clear Stats**.



# RadBlue Protocol Analyzer Version 1.10

[Released: 02 MAR 2009]

Questions?

Log on to the RadBlue Forum: <http://radblue.mywowbb.com/>

## Release Notes

### Release Summary

There are no changes to RPA for release 1.10.





# RadBlue Protocol Analyzer Version 1.9

[Released: 02 FEB 2009]

Questions?

Log on to the RadBlue Forum: <http://radblue.mywowbb.com/>

## Release Notes

### Release Summary

For release 1.9, we've created a Student Edition of RPA that allows the user to insert RPA between the Student Editions of RST and RGS.

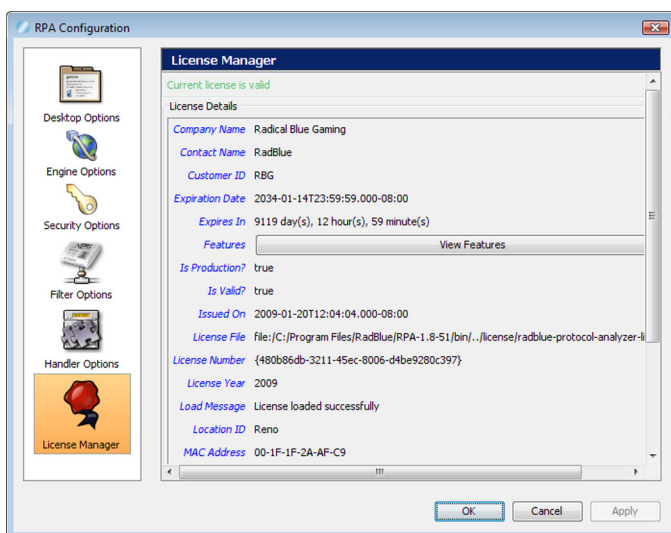
**Note** You must have a 2009 license to use RPA versions released in 2009. This includes RPA 1.9.

### New Features

- A new RPA Student Edition is now available. The RPA Student Edition is a fully functional version of RPA for use with RGS and RST. This new edition of RPA lets you get the experience you need to understand the G2S protocol

### Improvements

- A License Manager option has been added to the Configuration screen. The License Manager lets you license information and load updated licenses.



- The **System URL** field under Client Side Information is now set automatically from the S2S `commsOnline` command (in the `fromSystem` attribute).

