

This release:

- Fixed a user interface bug where the file menu was not being fully displayed.

If you have any ideas for improvement, questions, or issues let us know at [support@radblue.com](mailto:support@radblue.com).

<i>Case</i>	<i>Description</i>
17522	File menu not showing all items.

This release:

- Updated Java to 1.8.0\_275
- Updated JIDE to 3.7.12-pre
- Updated JXBrowser to 7.12

If you have any ideas for improvement, questions, or issues let us know at [support@radblue.com](mailto:support@radblue.com).

Case	Description
17157	Update Java to 1.8.0_275
17158	Update JIDE to 3.7.12-pre
17159	Update JXBrowser to 7.12

This release:

- Added support for GAT in S2S 1.6 and S2S 2.0.
- Updated Apache CXF to 3.2.13

If you have any ideas for improvement, questions, or issues let us know at [support@radblue.com](mailto:support@radblue.com).

<i>Case</i>	<i>Description</i>
16707	Updated Apache CXF to 3.2.13.
16755	Starting a web server to handle help files to work around a limitation in FireFox.
16936	Added support for <code>gat.getVerificationStatus</code> and <code>gat.getComponentList</code> .

This release:

- Added support for GAT extension in S2S 1.6 and S2S 2.0.
- Updated Java to OpenJDK 1.8.0\_242.

If you have any ideas for improvement, questions, or issues let us know at [support@radblue.com](mailto:support@radblue.com).

Case	Description
16392	Updated Java to OpenJDK 1.8.0_242.
16394	Moved the G2S WSDL to allow student licenses to work.
16609	Added support for GAT extension in S2S 1.6 and S2S 2.0.

This release:

- Fixed a bug with web browser cookies.
- Replaced deprecated JavaFX web browser

If you have any ideas for improvement, questions, or issues let us know at [support@radblue.com](mailto:support@radblue.com).

<i>Case</i>	<i>Description</i>
14904	ArrayIndexOutOfBoundsException exception when cookie had an empty error text.
14936	Switched web browser that is embedded in the RSS since Oracle is no longer supporting JavaFX in the JRE/JDK distributions.

This is the last release of the Windows 32-bit installer. Oracle is no longer supporting 32-bit Java installations.

This release:

- Added support for clientInfo, and playerBonus in S2S 2.0.0.
- Added support for clientType in S2S 1.6.0 and 2.0.0.
- Added Windows 64-bit installer.

If you have any ideas for improvement, questions, or issues let us know at [support@radblue.com](mailto:support@radblue.com).

<i>Case</i>	<i>Description</i>
14555	Created S2S 2.0.0 schema for use in RSS
14556	Added scripts for S2S 2.0.0
14557	Added clientInfo class support in S2S 2.0.0
14558	Added playerBonus class support in S2S 2.0.0
14559	Added support to RSS installer to install new scripts
14576	Fixed a bug where the RSS Edge script stops working when saving communications response configuration.
14580	Added clientType class support in S2S 1.6.0 and 2.0.0.
14628	Added missing clientInfo client types to S2S 1.4.0 and 1.6.0.
14631	Added a feature to scroll to the last used command when returning from sending a command.
14647	Added non-standard clientInfo commands to the central host script that should be only access from the edge script.
14874	RSS Windows 64-bit installer.

In this release,

- Upgraded Java to 1.8.0\_152.

If you have any ideas for improvement, questions, or issues let us know at [support@radblue.com](mailto:support@radblue.com).

Case	Description
12904	Updated Java to 1.8.0_152.

In this release,

- Added support for PKCS11 tokens such as SafeNet's eToken 5105.
- Fixed an issue where TLS clients in RadBlue tools would not negotiate TLSv1.1.

If you have any ideas for improvement, questions, or issues let us know at [support@radblue.com](mailto:support@radblue.com).

<i>Case</i>	<i>Description</i>
12470	TLSv1.1 support was disabled by default in Java 8 and therefore not enabled in the RadBlue tools. RadBlue tools now explicitly enable TLSv1, TLSv1.1 and TLSv1.2.
12688	The user interface gave the impression that the SCEP polling interval could be set as low as one second. The user interface has been changed so that 30 seconds is the minimum SCEP polling interval allowed.
12773	Added support for PKCS11 token as the certificate store for TLS communications.

## PKCS11 token support

The token is used as the security storage of the private key and public keys that are used in encrypted communications between the S2S host and the RSS.

### Prerequisites

1. Before the RSS can be configured to use a PKCS12 token, the token MUST be configured in the operating system. Please verify that the token is accessible in the operation system and working as expected.
2. Determine the PKCS12 shared library that is used to access the token from the operating system. For example, c:\Windows\System32\eTPKCS11.dll is the library file for SafeNet's eToken 5105.

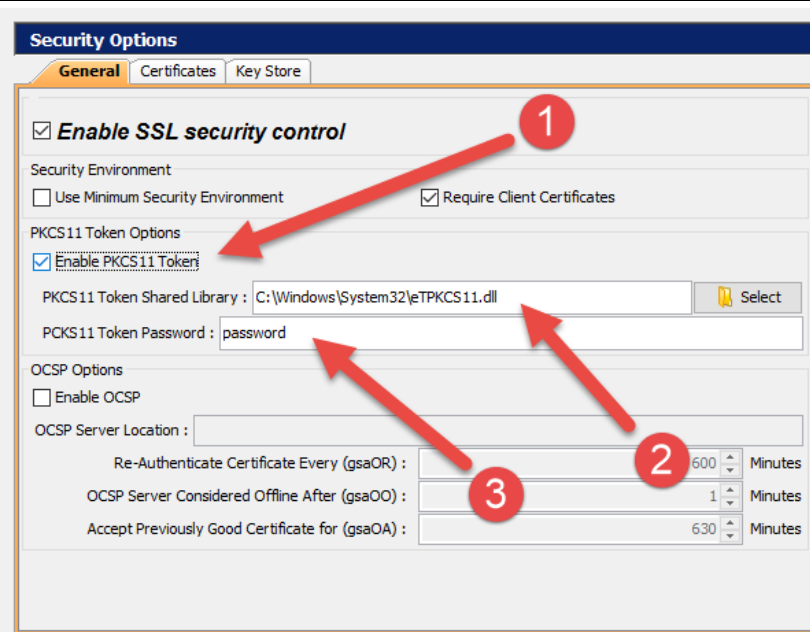


Procedure

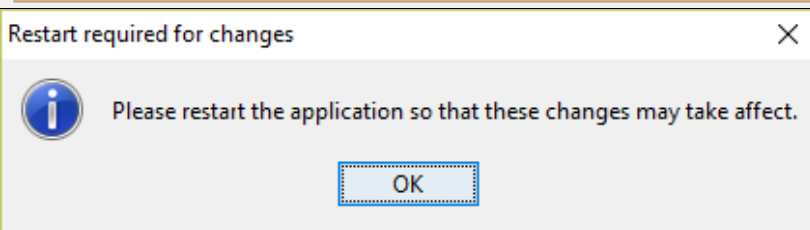
Select **Tools > Configure > Security Options**.

1. Select **Enable PKCS11 Token** option.
2. Verify that the **PKCS11 Token Shared Library** is set correctly.
3. If the token has a password, then enter it in the **PKCS11 Token Password** field.

Note: if the token does not have a password then set the password to an empty string.



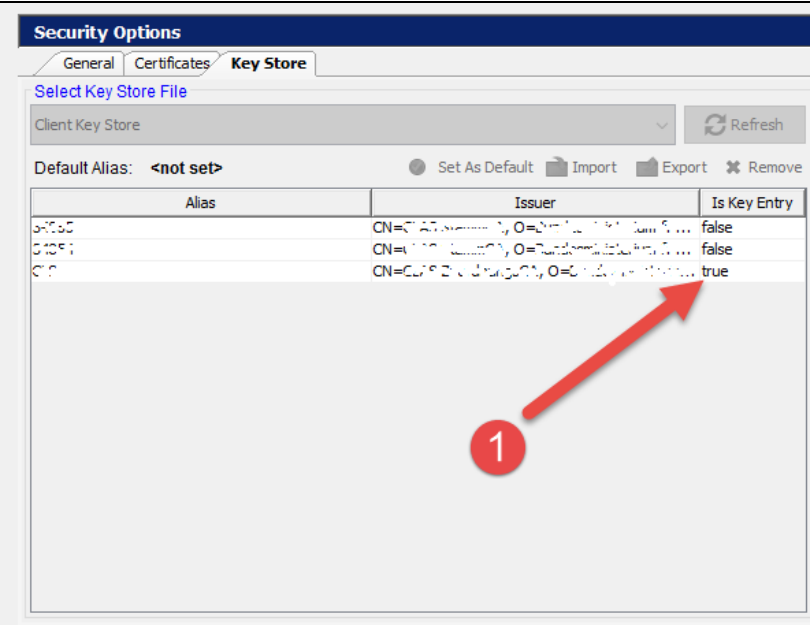
Click **Apply** and click **OK**.



Restart RSS (**File > Exit**) and then double click the RSS icon.

Verify that the token can be read by RSS by reviewing the key store tab in the Security Options and verifying that at least one of the aliases is a key entry.

(**Tools > Configure > Security Options > Key Store**)



In this release,

- Upgraded Java runtime to 1.8.0.112.

If you have any ideas for improvement, questions, or issues, just let us know at [support@radblue.com](mailto:support@radblue.com).

Case	Description
12042	Update Java runtime to 1.8.0.112.
12126	Fixed an issue with the wrong version of STAX2 API jar file being installed.
12132	Fixed an issue where the S2S message summary was not being calculated properly.

In this release,

- Added support for missing commands in clientEvents class.

If you have any ideas for improvement, questions, or issues, just let us know at [support@radblue.com](mailto:support@radblue.com).

Case	Description
11520	Debug.zip file now includes the bin directory to determine which VMOPTIONS were in effect when the debug.zip file was created.
11586	Added support for missing clientEvents commands in the Edge system.
11587	Added support for missing clientEvents commands in the Central system.
11588	Fixed the logging to separate Edge for Central logs.
11660	Fixed a bug where an ampersand in the company name caused the RSS script to fail.

In this release,

- Commands that do not need a response are now sent as notifications in S2S 1.6.0.
- Upgraded Java to 1.8.0\_74.
- Fixed typos and S2S 1.6.0 scripts.

If you have any ideas for improvement, questions, or issues, just let us know at [support@radblue.com](mailto:support@radblue.com).

<i>Case</i>	<i>Description</i>
11154	Upgraded Java to 1.8.0_74.
11383	Fixed a typo on the systemInfoUpdate panel for S2S 1.6.0.
11384	The file name for setInfoUpdateSubList panel was fixed in S2S 1.6.0.
11385	Host commands that don't need a response are now sent as notifications. Previously, they were sent as requests.
11386	Fixed getCompAvailability so that the script does not exit when the command is received in S2S 1.6.0.
11387	Fixed activeRatingReq so that the script does not exit when the command is received in S2S 1.6.0.
11388	Fixed a typo in the issueVoucherReq panel for S2S 1.6.0.
11389	Edge command that don't need a response are now sent as notifications. Previously, they were sent as requests.
11410	RSS will not start with an invalid license. The user can load a new license or exit.

<i>Case</i>	<i>Description</i>
7222	SOAP client has been configured to maintain keepAlive messages for longer than 5 seconds. A new RSS.VMOPTIONS option has been added to configure the HTTP client.
10961	Date format in postFinancialTransaction has been corrected. An error in which cashTrans was not a child element of financialTrans has also been corrected.
10976	RSS now supports financial transactions in the central server.
10983	Explicitly enabling TLSv1, TLSv1.1 and TLSv1.2.