

Release Summary

In this release, the G2S transcript was enhanced by adding Max and Restore buttons to the View Transcript Message and Compare Messages windows.

We hope you enjoy this new release. If you have any ideas for improvement that we may have missed, just let us know at support@radblue.com.

Transcript Modifications

- The **G2S transcript** was enhanced by adding **Max** and **Restore** buttons to the View Transcript Message window (launched when you double click a message in the transcript). Since these buttons are located in the top frame of the control, they are available in the Command View and the XML View of the message. This feature is most useful when you encounter a really large message.



Max – expands the screen to the full size of the home screen of the computer.

Restore – Restores the window to its previous size and location.

- The same **Max** and **Restore** button functionality was added to the **Compare** button in the transcript. This feature is used to compare two similar messages in the transcript, so it was also a good candidate for a maximize feature.

Release Date: 26 August 2014

Release Summary

In this release, the RAS was updated to use a new version of Java, and a minor issue was corrected where a "Realtime Update Disabled" banner was being incorrectly displayed.

We hope you enjoy this new release. If you have any ideas for improvement that we may have missed, just let us know at support@radblue.com.

Installer Modifications

- **All tools have been updated to use Java 1.7.0_65** – To keep up with the latest security (and other) improvements, all tools have been updated to Java 1.7.0_65. When installing this release, the installer will download Java as part of the installation. If you are installing multiple tools on your computer, this Java upgrade is only done once.

Transcript Modifications

- The RAS was incorrectly displaying a "Realtime Update Disabled" banner on the Transcript and Debug file windows. Since the RAS is only used for viewing files in debug sets from other RadBlue tools, this banner was not relevant, and so this was easily corrected.

Release Summary

In this release, we added quite a few usability improvements to the transcript control – color-coding the XML documents, letting you save changes that you make to the transcript layout and improving quick filter results so the display now includes the selected record when you clear the filter.

We hope you enjoy this new release. If you have any ideas for improvement that we may have missed, just let us know at support@radblue.com.

The following sections provide details on each of the significant modifications and improvements.

Installer Modifications

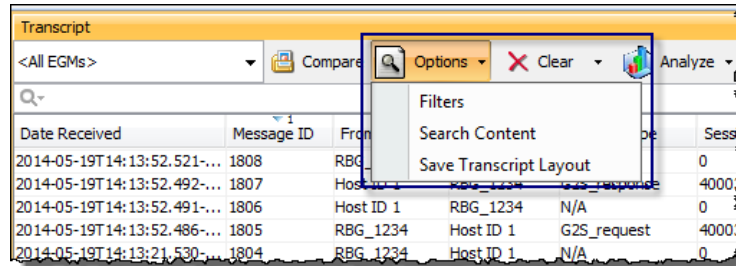
- **More Complete Error Reporting** – If the MAC address in the license file from RadBlue is not found in the PC, the resulting error message now displays a list of the MAC addresses that are seen by the installer for speedy solutions to installation problems.
- **All tools have been updated to use Java 1.7.0_51** – in an effort to stay current, all tools are being updated to a new version of Java. Java 8 is almost ready for prime-time, so we'll probably move to that new major version in the next release of our products.

Transport and Security Modifications

- **Proper handling of SCEP certificate chains** – The RadBlue SCEP client was not properly handling a certificate chain from an SCEP server. The tool was properly storing the first certificate, but then overwrote that certificate with the second certificate in the chain. Resolution - we now verify that the expected distinguished name matches the certificate before we store the certificate. (This is a common security routine used in all products).
- **Import/export self-signed certificates** – When the self-signed certificate option in the tool is used to create a signed certificate, that certificate has to be shared with other end-points so they trust the connection. New export and import options have been added to the Key Store tab in all tools so you can easily export a certificate from, and import a certificate into the tool's keystore file.

Transcript Modifications

- **Minor reorganization of Transcript Controls** – Since UI changes are usually the most torturous, we'll start the Transcript section with this one. In this new release of the tools, the Search and Filter options have now been grouped with the new Save Transcript Layout option in a new group call **Options**:



- **Column order, size, and selected columns are now persisted** – Make any changes to the layout of one instance of the transcript, then select **Options > Save Transcript Layout** to save your changes as the default layout. This new format is then used for all Transcript instances *in that tool* once you restart.
- **View XML is now color-coded!** We found a cool control that allows us to color code the XML document seen in the View XML object for Transcript Messages, using a unique color for elements, attributes and text strings. This makes the XML MUCH easier to read:

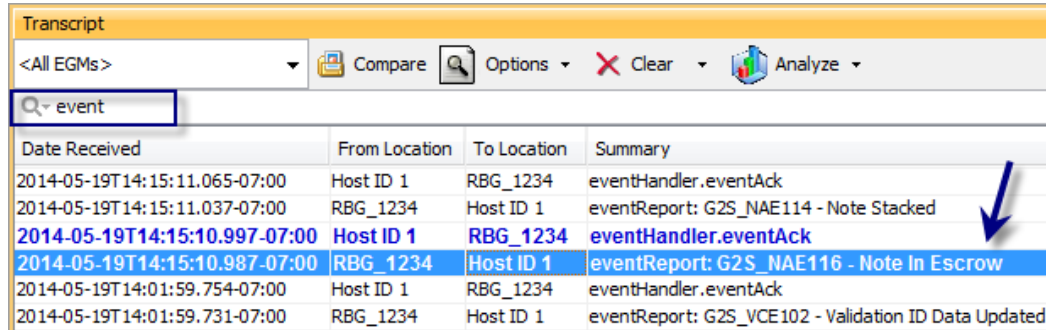
```

Transcript Message [ID: 785] - communications.keepAlive [G2S_request]
Command View XML
Text View Hex View
1 <?xml version="1.0" encoding="UTF-8" standalone="yes"?>
2 <g2s:g2sMessage xmlns:g2s="http://www.gamingstandards.com/g2s/schemas/v1.0.3">
3   <g2s:g2sBody g2s:dateTimeSent="2014-05-12T10:54:43.274-07:00" g2s:egmId="RBG_1234"
4     g2s:hostId="1">
5     <g2s:communications g2s:commandId="7418" g2s:dateTime="2014-05-12T10:54:43.270-07:00"
6       g2s:deviceId="1"
7       g2s:errorCode="G2S_none"
8       g2s:errorText=""
9       g2s:sessionId="4000035"
10      g2s:sessionMore="false"
11      g2s:sessionRetry="false"
12      g2s:sessionType="G2S_request"
13      g2s:timeToLive="30000">
14     <g2s:keepAlive/>
15   </g2s:communications>
16 </g2s:g2sBody>
17 </g2s:g2sMessage>

```

- **Improved reporting when real-time updates is disabled** – When the real-time update of the transcript is disabled, the **Realtime Update** label now goes to Red and Bold, and a message is displayed on the transcript table to make it obvious that the table is no longer being updated in real time.

- **Improved Quick Filter results display** – If you use the Quick Filter control in the transcript to filter the current view based on the entered string, and then select a specific message in the resulting transcript set, that record will now be in the active window when you clear the filter (so you can easily see the G2S messages around the selected message).



Date Received	From Location	To Location	Summary
2014-05-19T14:15:11.065-07:00	Host ID 1	RBG_1234	eventHandler.eventAck
2014-05-19T14:15:11.037-07:00	RBG_1234	Host ID 1	eventReport: G2S_NAE114 - Note Stacked
2014-05-19T14:15:10.997-07:00	Host ID 1	RBG_1234	eventHandler.eventAck
2014-05-19T14:15:10.987-07:00	RBG_1234	Host ID 1	eventReport: G2S_NAE116 - Note In Escrow
2014-05-19T14:01:59.754-07:00	Host ID 1	RBG_1234	eventHandler.eventAck
2014-05-19T14:01:59.731-07:00	RBG_1234	Host ID 1	eventReport: G2S_VCE102 - Validation ID Data Updated

- **No more "Not Set" tool tips** – In the Transcript command view, there were lots of instances of tool tips that displayed as "Not Set" (because they weren't defined). These undefined tool tips no longer display in the tools.
- **More readable denominations** – In the command view for the meterInfo command, denominations are now shown in decimal form, rather than in millicents for currency meters and game denomination meters.

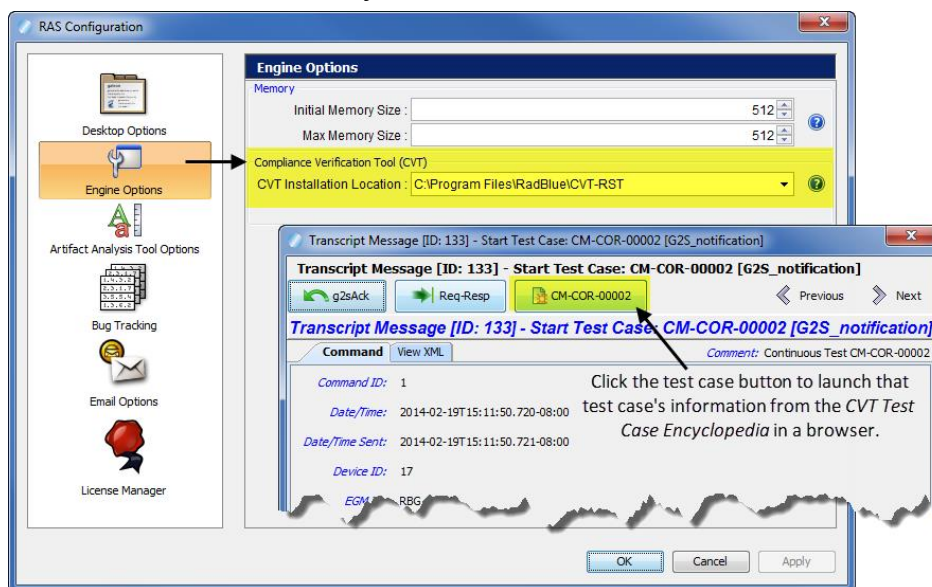
Release Summary

In this release, we added backup files to let you save certain settings between installations of RAS, added the ability to view CVT Test Case Encyclopedia information directly from RAS and made improvements to the Message Transcript and SOAP Transcript.

New Features

- If you are using RAS with the [Compliance Verification Tool \(CVT\)](#), you can now view test cases from the [CVT Test Case Encyclopedia](#) through the message details screen. To view a test case, click the test case button. A browser will launch with the specified section of the *CVT Test Case Encyclopedia*.

Note that you must first map to the CVT directory from the computer that RAS is installed on by going to **Tools > Configure > Engine Options > CVT Installation Location** and navigating to the CVT installation directory.



Configuration Modifications

The following file and configuration options are saved in a backup file, allowing the specified information to be retained between installations:

- **RLT.vmoptions** file
- **Start in Full-Screen Mode** parameter (under Desktop Options)
- **Max G2S Transcript Messages** parameter (under Desktop Options)
- **Max Soap Transcript Messages** parameter (under Desktop Options)
- **Test Cases Location** parameter (under Engine Options)
- All **Artifact Analysis Tool Options**
- All **Email Options**

Transcript Modifications

- Changes to column widths in the Message Transcript and SOAP Transcript are now retained when you scroll through messages by selecting **Previous 1000** and **Next 1000**.
- A new **State** column has been added to the Message Transcript. Message states are: **Standard** (G2S message with no errors), **Error** (G2S message with errors), **Comment** (Comment made in CVT Message Transcript) and **Special Error** (CVT test case error). Sorting the Message Transcript column on State, which you can do by clicking the column header, lets you quickly identify messages with errors and comments.
- An issue in which the data displayed incorrectly in the `eventHandler.eventHandlerLogList` details screen (accessed by double-clicking the message row in the Message Transcript) has been corrected.