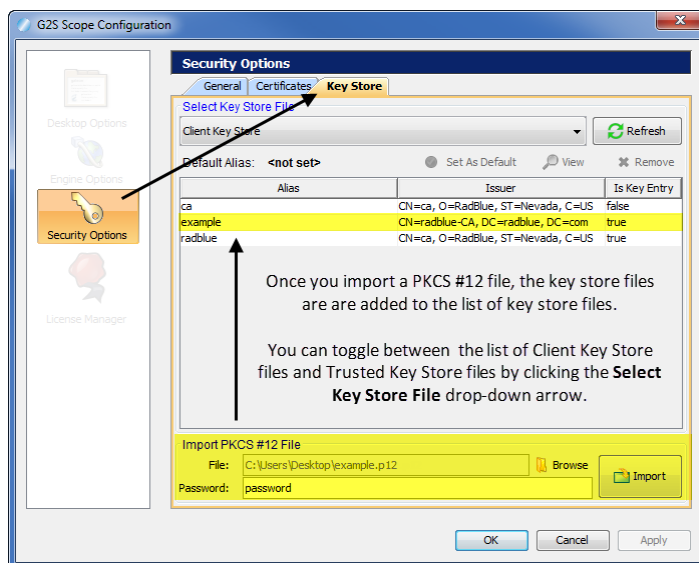


Release Summary

In this release, we added support for PKCS #12 files for importing key store files and made usability improvements.

Configuration Modifications

- A new **Import PKCS #12 File** option (**Tools > Configure > Security Options > Key Store**) lets you quickly import the certificates stored in a P12 or PFX file into the tool's **client.jks** and **trusted.jks**. All certificates in the PKCS #12 file are imported to client.jks. Only non-key-entry certificates are imported to trusted.jks. Once the certificates are successfully imported, they can be viewed from the Key Store tab.



User Interface Modifications

- Error messages that display in the **GSA Message Validator**, accessed through the Tools option on the menu bar, have been improved with clearer information when XML is invalid or the G2S message does not conform to the protocol.
- The performance of the Debug Console has been improved to display messages more efficiently, especially during long runs of the tool.

Release Summary

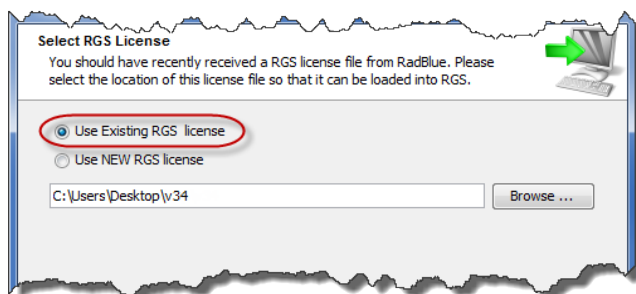
In this release, we added the ability to use the existing license when you reinstall RSS and added a configuration option that lets you fine-tune certificate requirements.

Did you know? ...

You can configure SSL options, manage keystore files and import certificates through the Security Options configuration screen. Go to **Tools > Configure > Security Options**. For more information, see "Configure Security Options" in **RSS Help** or the [RSS User Guide](#).

Installation Modifications

- For version 34 and higher, if you install a version of RSS over an existing version, you now have the option of using the existing license. If you do not want to use the existing license, you can browse to a new license. Note that this option is only available when you install RSS over a previous installation. All components of the previous installation are removed by the installer except the license file and any backup files.



Configuration Modifications

- A new security option has been added that lets you fine-tune certificate requirements for the tool. Select **Require Client Certificate** if the other endpoint *must* have a certificate or it fails authentication. If this option is cleared, the other endpoint is not asked to send its client certificate. By default, this option is selected.

Release Date: 06 AUG 2013

Release Summary

In this release, we updated the required Java version and improved the RSS installation process.

Did you know? ...

Many complex S2S commands use an XML file that you can customize easily. XML files are located in the **rss-data** folder in the RSS installation directory. For more information, see "Create or Edit a Custom Command" in the [RSS User Guide](#) or **RSS Help**.

Installation Modifications

- All RadBlue products now require **Java SE 7u25** or higher. If the installer cannot find this version on your computer, you are prompted to download and run the Java installer, *or* navigate to the correct Java version. This update should have minimal effect on your environment, but keeps our products on modern versions of the underlying technology.

Release Date: 04 JUN 2013

Release Summary

In this release, we updated the required Java version.

Installation Modifications

- All RadBlue products now require **Java SE 7u17** or higher. If the installer cannot find this version on your computer, you are prompted to download and run the Java installer, *or* navigate to the correct Java version. This update should have minimal effect on your environment, but keeps our products on modern versions of the underlying technology.

Release Date: 02 APR 2013

Release Summary

In this release, we updated the required Java version and updated the Apache CFX version.

Installation Modifications

- All RadBlue products now require **Java SE 7u11** or higher. If the installer cannot find this version on your computer, you are prompted to download and run the Java installer, *or* navigate to the correct Java version. This update should have minimal effect on your environment, but keeps our products on modern versions of the underlying technology.

Engine Modifications

- In an ongoing effort to ensure that RadBlue tools use the latest technologies, RSS has been updated to Apache CFX version 2.7.2. This change should not affect tool performance or operation.

Release Summary

In this release, we moved to 2013 licenses, added a configuration option and corrected a minor issue.

Installation Modifications

- RSS now requires a 2013 license. If you have not received a 2013 license, please contact [RadBlue Support](#).

Configuration Modifications

- An issue in which the default keystore alias was not being saved has been corrected. You can set the default keystore alias by going to **Tools > Configure > Security Options > Keystore**, and clicking **Set As Default**.
- In a testing environment, you now have the option to enable minimum security. This option is found at **Tools > Configure > Security Options**.



When you enable this option:

- The **Transport Layer Security (TLS) 1.0** is the *only* supported protocol for client-side TLS sessions. Note that host-side sessions are not restricted.
- The only supported cipher suite is `SSL_RSA_WITH_3DES_EDE_CBC_SHA` for both client- and host-side TLS sessions.