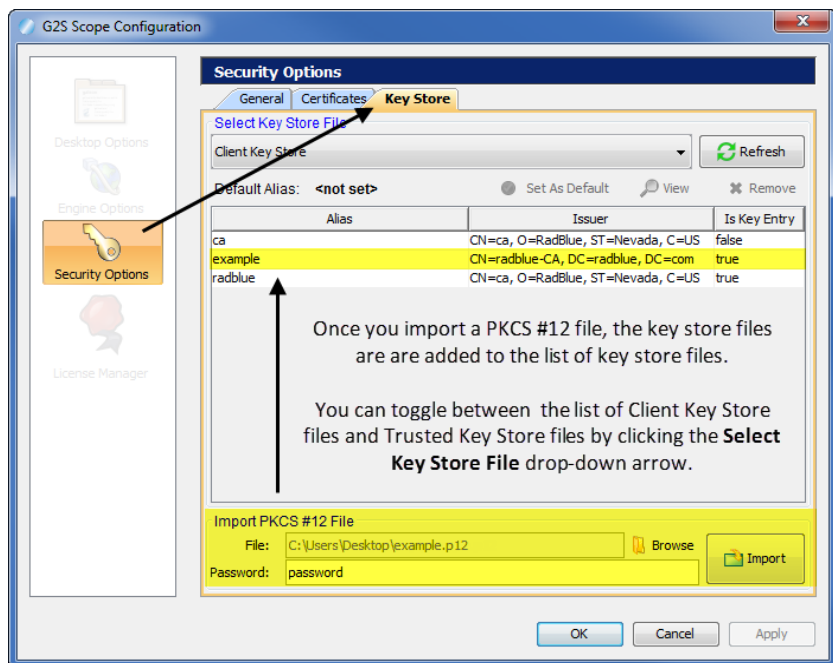


Release Summary

In this release, we added support for PKCS #12 files for importing key store files, added strike-through font for attributes that are deprecated in G2S 2.1 on the Message Transcript detail screen and made usability improvements.

Configuration Modifications

- A new **Import PKCS #12 File** option (**Tools > Configure > Security Options > Key Store**) lets you quickly import the certificates stored in a P12 or PFX file into the tool's **client.jks** and **trusted.jks**. All certificates in the PKCS #12 file are imported to client.jks. Only non-key-entry certificates are imported to trusted.jks. Once the certificates are successfully imported, they can be viewed from the Key Store tab.



User Interface Modifications

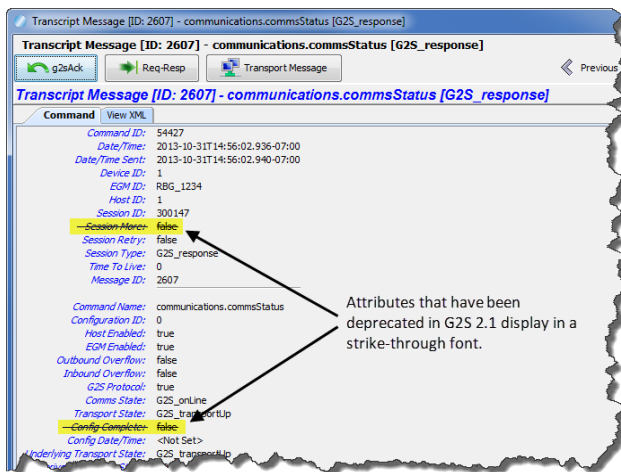
- Error messages that display in the **GSA Message Validator**, accessed through the Tools option on the menu bar, have been improved with clearer information when XML is invalid or the G2S message does not conform to the protocol.
- The performance of the Debug Console has been improved to display messages more efficiently, especially during long runs of the tool.

Advanced Transcript Analyzer Modifications

- The Summary version of the Advanced Transcript Analysis Report now displays one incident of each error type for each communications session.

Transcript Modifications

- Attributes that have been deprecated in G2S 2.1 now display in a strike-through font in the Message Transcript detail screen's Command view. The command details screen can be accessed by double-clicking any message in the Message Transcript.



- Comments associated with a message are now displayed next to the Command and View XML tabs when you view the message details as well as in the Message Transcript object.



- An issue in which the **Clear Display** option in the Message Transcript cleared the transcript display as well as the EGM selector list has been corrected. The **Clear Display** option now clears the transcript messages from the table only. The **Clear Database** option removes all transcript records from the transcript database, clears transcript messages from the table and clears the EGM selector list.

Release Summary

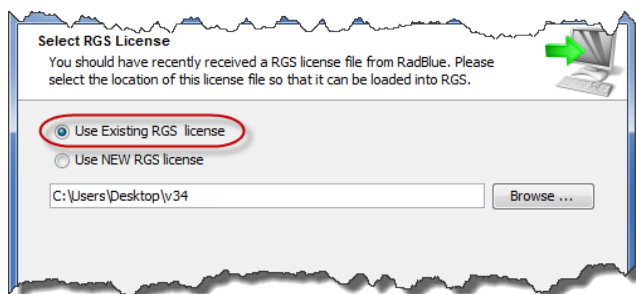
In this release, we added the ability to use the existing license when you reinstall RPA, added a new configuration option and made an improvement to the Message Transcript.

Did you know....

You can use a custom schema file with RPA by placing the schema in the designated directory and selecting that file through the Engine Options configuration screen. For more information, see "Install a Custom Schema File" in the [RPA User Guide](#) or **RPA Help**.

Installation Modifications

- For version 34 and higher, if you install a version of RPA over an existing version, you now have the option of using the existing license. If you do not want to use the existing license, you can browse to a new license. Note that this option is only available when you install RPA over a previous installation. All components of the previous installation are removed by the installer except the license file and any backup files.



Configuration Modifications

- A new security option (**Tools > Configure > Security Options > General**) has been added that lets you fine-tune certificate requirements for the tool. Select **Require Client Certificate** if the other endpoint *must* have a certificate or it fails authentication. If this option is cleared, the other endpoint is not asked to send its client certificate. By default, this option is selected.

Transcript Modifications

- On the Command tab for the `cabinet.setOperatingHours` command and the `cabinet.operatingHoursList` command, accessed by double-clicking that command in the Message Transcript, a standard Time value is now displayed instead of a Time value in milliseconds.

Release Summary

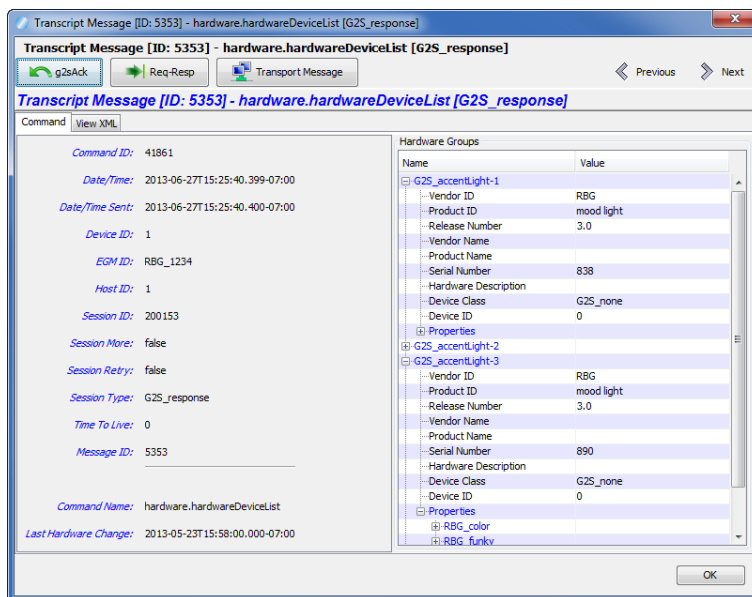
In this release, we updated the required Java version, added support for the hardware class and enhanced the Message Transcript to allow you to display multiple EGMs at once.

Did you know....

The **Advanced Transcript Analyzer** lets you easily verify that commands being sent by the EGM are semantically valid. Visual cues let you easily discern which events have errors. You can then quickly drill down to the message content level to view the issue. For more information, see "Using the Advanced Transcript Analyzer" in the [RPA User Guide](#) or **RPA Help**.

New Features

- **New for 2.1!** RPA now supports the **Hardware** class.
- You can view hardware command details in the Message Transcript.

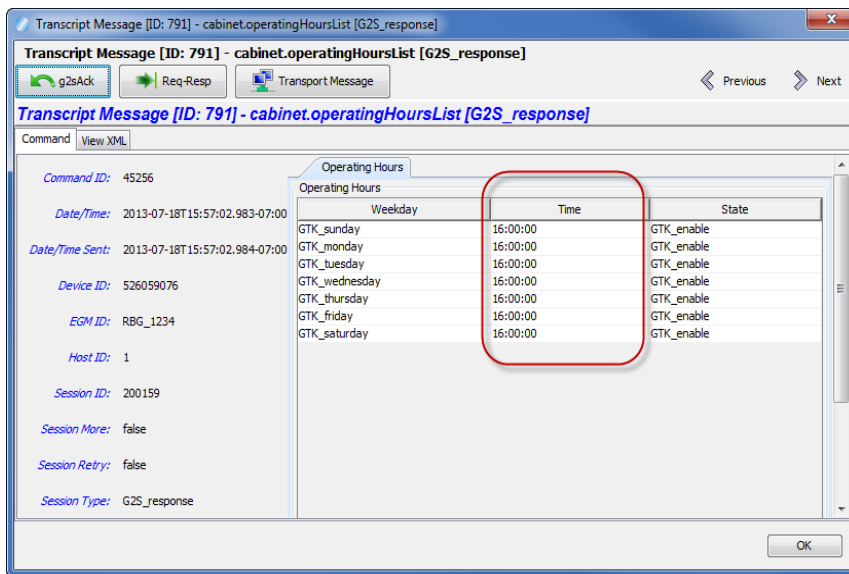


Installation Modifications

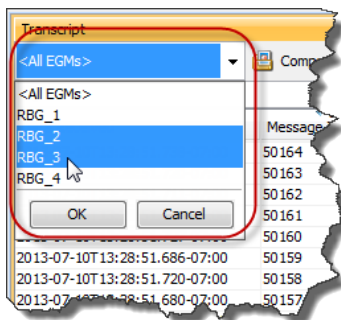
- All RadBlue products now require **Java SE 7u25** or higher. If the installer cannot find this version on your computer, you are prompted to download and run the Java installer, or navigate to the correct Java version. This update should have minimal effect on your environment, but keeps our products on modern versions of the underlying technology.

Transcript Modifications

- In the Message Transcript, the Time column value for the detail view of the `cabinet.operatingHoursList` command now displays in military time.



- You can now view multiple EGMS at once in the Message Transcript (rather than one or all) by holding down the CTRL button and selecting the EGMS you want to view.



Release Summary

In this release, we updated the required Java version, added the ability to import and export configuration settings and corrected transcript issues.

Did you know....

4 GB is now the **minimum** Memory requirement for computers running RPA.

Installation Modifications

- All RadBlue products now require **Java SE 7u17** or higher. If the installer cannot find this version on your computer, you are prompted to download and run the Java installer, *or* navigate to the correct Java version. This update should have minimal effect on your environment, but keeps our products on modern versions of the underlying technology.

User Interface Modifications

- Two new options, accessed through the File option on the menu bar, let you export all RPA configuration options and import those options into another instance of RPA. With these options, you can now quickly configure new instances of RPA.
 - **Export Configuration...** - Select to export all configuration settings for the tool, including security certificates. The resulting ZIP file can then be imported into another version of the same tool.
 - **Import Configuration...** - Select to import all configuration settings for the tool, exported from another version of the same tool, including security certificates. This option is used when you want to quickly set up a specific configuration for the tool that is already set up in another version of the tool.

Transcript Modifications

- If the tool receives a date/time with the seconds parsed greater than milliseconds, the time/date is truncated to milliseconds in the transcripts. For example:

The date/time `2013-04-30T08:03:46.1234567890-07:00`

displays as `2013-04-30T08:03:46.123-07:00` in the transcript.

You can view the longer date/time format on the **XML** tab of the command object. To access the command object, double-click any message in the transcript.

- An issue in which the Message Transcript was reporting application errors incorrectly in the Summary column (for example, when sending an invalid attribute value in a message) has been corrected. The error is now noted correctly, for example:

```
optionConfig.error [G2S_OCX013, Invalid Value Selected For Option  
- G2S_none is invalid for eventSubscriptions]
```


Release Summary

In this release, we updated the required Java version, updated the Apache CXF version and made a minor change to the details screen in the Message Transcript.

Installation Modifications

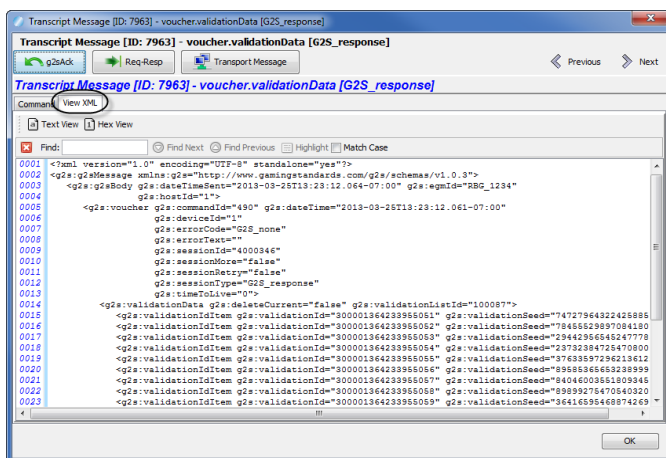
- All RadBlue products now require **Java SE 7u11** or higher. If the installer cannot find this version on your computer, you are prompted to download and run the Java installer, or navigate to the correct Java version. This update should have minimal effect on your environment, but keeps our products on modern versions of the underlying technology.

Engine Modifications

- In an ongoing effort to ensure that RadBlue tools use the latest technologies, RPA has been updated to Apache CXF version 2.7.2. This change should not affect tool performance or operation.

Transcript Modifications

- The detail screen in the Message Transcript has been streamlined from two **View XML** options to one. The View XML button on the Command tab has been removed. To view messages in XML, click the **View XML** tab.



Release Summary

In this release, we updated RPA to 2013 licenses, and made improvements to security options.

Installation Modifications

- RPA now requires a 2013 license. If you have not received a 2013 license, please contact [RadBlue Support](#).

Security and Transport Modifications

- An issue in which the default keystore alias was not being saved has been corrected. You can set the default keystore alias by going to **Tools > Configure > Security Options > Keystore**, and clicking **Set As Default**.
- In a testing environment, you now have the option to enable minimum security. This option is found at **Tools > Configure > Security Options**.



When you enable this option:

- The **Transport Layer Security (TLS) 1.0** is the *only* supported protocol for client-side TLS sessions. Note that host-side sessions are not restricted.
- The only supported cipher suite is `SSL_RSA_WITH_3DES_EDE_CBC_SHA` for both client- and host-side TLS sessions.

Engine Modifications

- A **second-pass-validate** attribute has been added to the g2s-schema-metadata.xml. This attribute is designed to give you a second validation pass to detect syntax errors that are not found in the first validation pass attribute. Set this attribute to **false** if the second validation pass takes too much CPU resources, or the EGM/host is in violation of the G2S schema and you are unable to fix your code. The default is **true**.

```
<?xml version="1.0" encoding="UTF-8"?>  
- <schema second-pass-validation="true" validation="true" nice="true" version="2.1.0">  
  <loader classname="com.radblue.gsa.g2s.core.types.SchemaLoader"/>  
  <source root-package="com.radblue.gsa.g2s"/>  
  - <command-classpath>  
    <classpath value="com.radblue.cvt.commands"/>  
  </command-classpath>  
  - <namespaces>
```