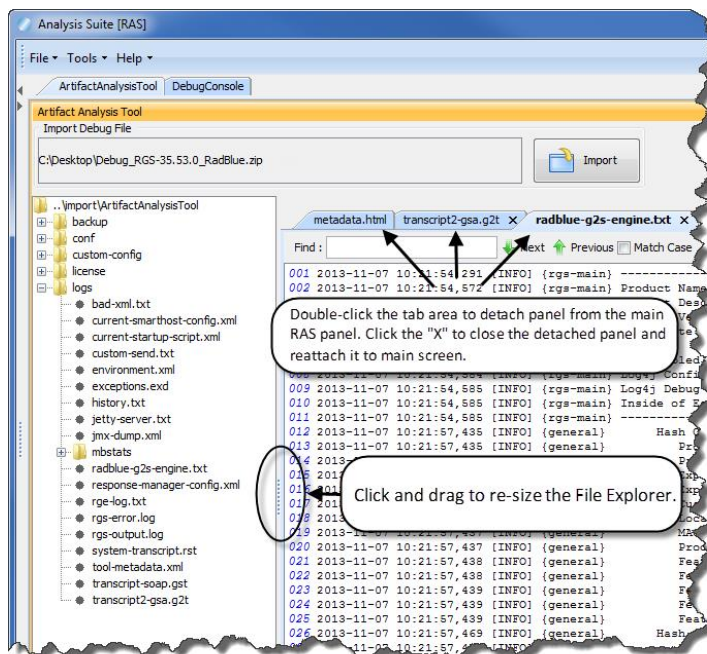


Release Summary

In this release, we made several improvements to the Message Transcript, improved the performance of the Debug Console and added the ability to detach display tabs from the main screen for comparing information.

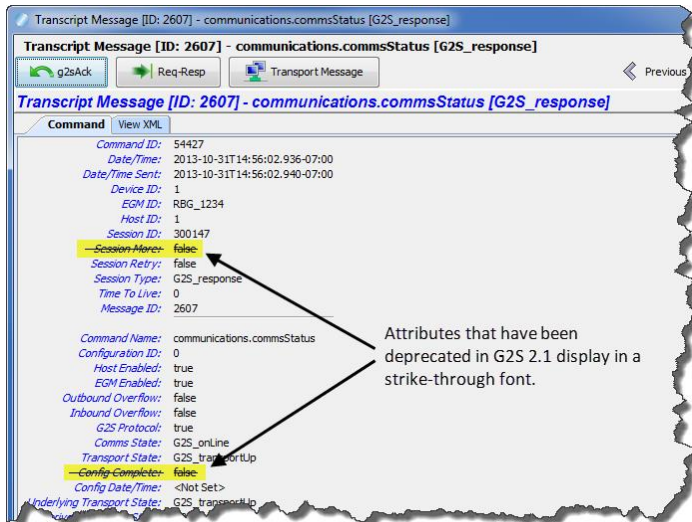
User Interface Modifications

- Error messages that display in the **GSA Message Validator**, accessed through the Tools option on the menu bar, have been improved with clearer information when XML is invalid or the G2S message does not conform to the protocol.
- You can now re-size the File Explorer panel to better fit the screen.
- Any display tab can now be detached from the main RAS interface so you can view multiple files at once (for example, transcript and log information). Just double-click on the tab to detach it. Close the window to add it back to the RAS interface.
- The performance of the Debug Console has been improved to display messages more efficiently, especially during long runs of the tool.



Transcript Modifications

- On the Command tab for the `cabinet.setOperatingHours` command and the `cabinet.operatingHoursList` command, accessed by double-clicking that command in the Message Transcript, a standard Time value is now displayed instead of a Time value in milliseconds.
- An issue in which the **Clear Display** option in the Message Transcript cleared the transcript display as well as the EGM selector list has been corrected. The **Clear Display** option now clears the transcript messages from the table only. The **Clear Database** option removes all transcript records from the transcript database, clears transcript messages from the table and clears the EGM selector list.
- Attributes that have been deprecated in G2S 2.1 now display in a strike-through font in the Message Transcript detail screen's Command view. The command details screen can be accessed by double-clicking any message in the Message Transcript.



- Comments associated with a message are now displayed next to the Command and View XML tabs when you view the message details as well as in the Message Transcript object.



Release Summary

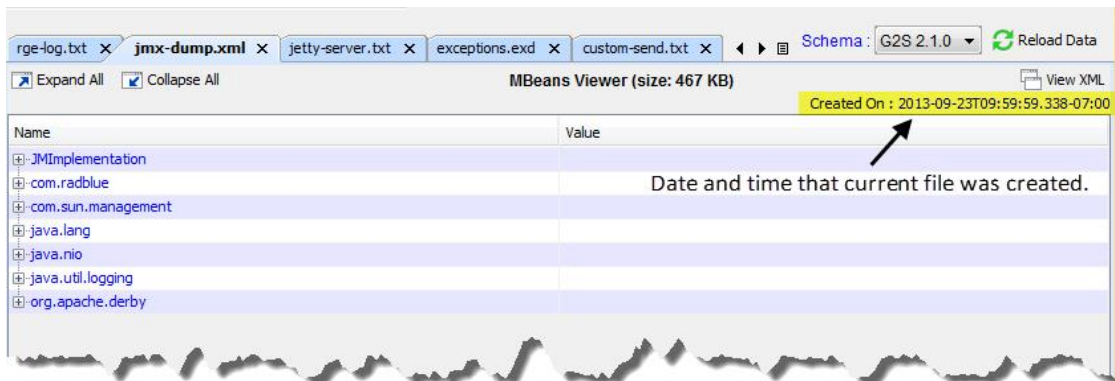
In this release, we made improvements to the Advanced Transcript Analyzer, Message Transcript and JMX Viewer.

Did you know? ...

You can view the contents of Debug*.zip files by typing **ALT+E** or by pressing the file (📁) icon, directly above the Reload Data option in the upper right corner of the screen. ZIP file content displays in a tree structure that you can browse.

User Interface Modifications

- A **Created On** field has been added to the JMX Viewer that displays the date and time that the debug log was created.



The JMX Viewer can be accessed from the **logs** directory in the Debug File Explorer.

Advanced Transcript Analyzer Modifications

- The Summary version of the Advanced Transcript Analysis Report now displays one incident of each error type for each communications session.

Transcript Modifications

- On the Command tab for `cabinet.operatingHoursList`, accessed by double-clicking that command in the Message Transcript, a standard Time value is now displayed nstead of a Time value in milliseconds.

Release Summary

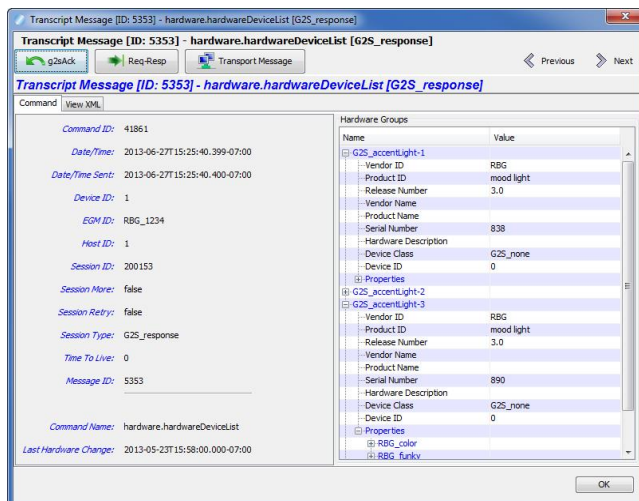
In this release, we updated the required Java version, added support for the Hardware class, improved the RAS installation process and made an improvement to the Message Transcript.

Did you know? ...

RAS will accept a debug.zip file from *any* RadBlue tool. The Message Transcript in RAS displays exactly as in other RadBlue tools to make analysis easy.

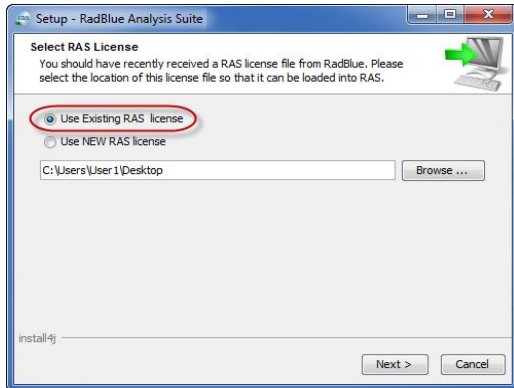
New Features

- **New for 2.1!** RAS now supports the **Hardware** class.
- You can view hardware command details in the Message Transcript.



Installation Modifications

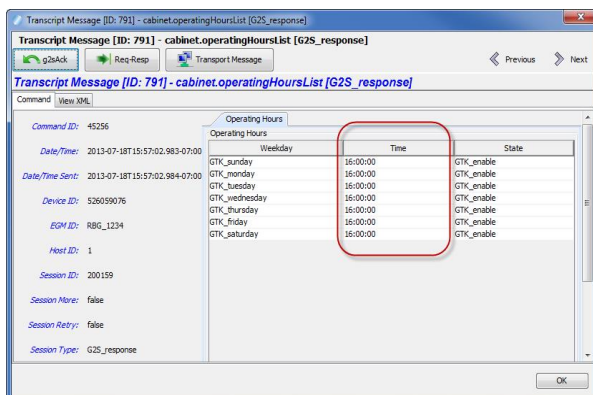
- For version 32 and higher, if you install a version of RAS over an existing version, you now have the option of using the existing license. If you do not want to use the existing license, you can browse to a new license. Note that this option is only available when you install RAS over a previous installation. All components of the previous installation are removed by the installer except the license file and any backup files.



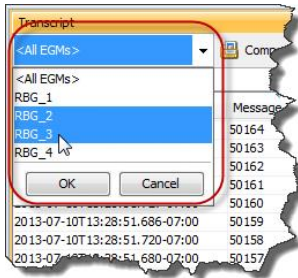
- All RadBlue products now require **Java SE 7u25** or higher. If the installer cannot find this version on your computer, you are prompted to download and run the Java installer, or navigate to the correct Java version. This update should have minimal effect on your environment, but keeps our products on modern versions of the underlying technology.

Transcript Modifications

- In the Message Transcript, the Time column value for the detail view of the `cabinet.operatingHoursList` command now displays in military time.



- You can now view multiple EGMS at once in the Message Transcript (rather than one or all) by holding down the CTRL button and selecting the EGMs you want to view.



Release Summary

In this release, we updated the required Java version and corrected transcript issues.

Installation Modifications

- All RadBlue products now require **Java SE 7u17** or higher. If the installer cannot find this version on your computer, you are prompted to download and run the Java installer, *or* navigate to the correct Java version. This update should have minimal effect on your environment, but keeps our products on modern versions of the underlying technology.

Transcript Modifications

- If the tool receives a date/time with the seconds parsed greater than milliseconds, the time/date is truncated to milliseconds in the transcripts. For example:

The date/time `2013-04-30T08:03:46.1234567890-07:00`

displays as `2013-04-30T08:03:46.123-07:00` in the transcript.

You can view the longer date/time format on the **XML** tab of the command object. To access the command object, double-click any message in the transcript.

- An issue in which the Message Transcript was reporting application errors incorrectly in the Summary column (for example, when sending an invalid attribute value in a message) has been corrected. The error is now noted correctly, for example:

```
optionConfig.error [G2S_OCX013, Invalid Value Selected For Option  
- G2S_none is invalid for eventSubscriptions]
```


Release Summary

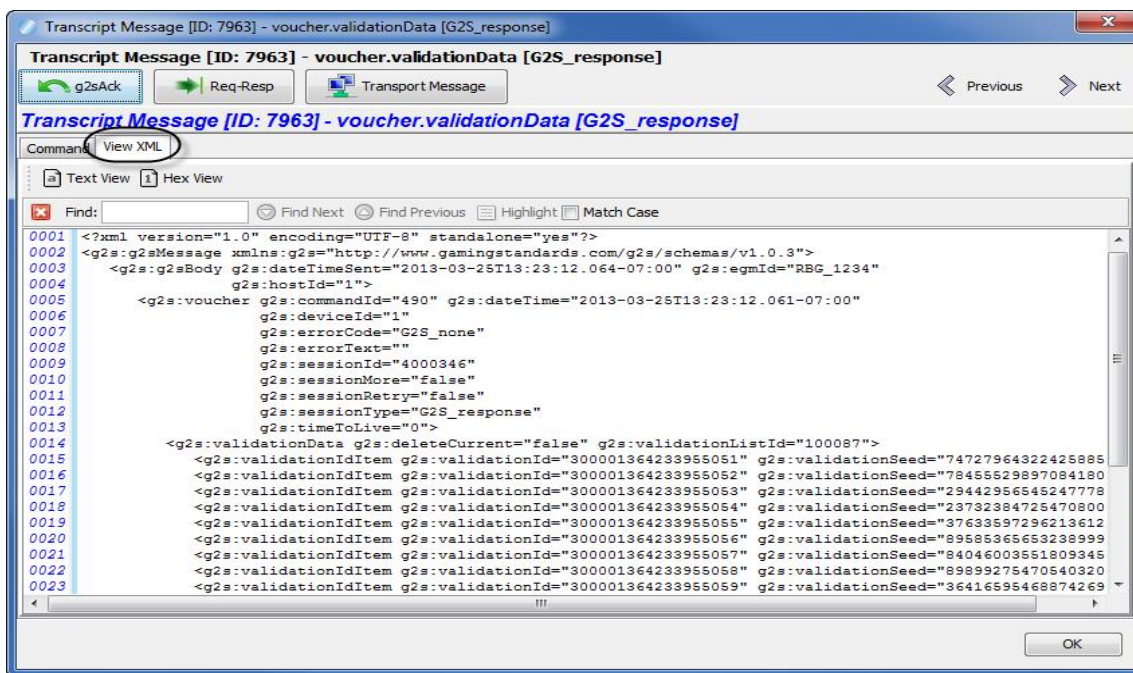
In this release, we updated the required Java version and made a minor change to the details screen in the Message Transcript.

Installation Modifications

- All RadBlue products now require **Java SE 7u11** or higher. If the installer cannot find this version on your computer, you are prompted to download and run the Java installer, or navigate to the correct Java version. This update should have minimal effect on your environment, but keeps our products on modern versions of the underlying technology.

Transcript Modifications

- The detail screen in the Message Transcript has been streamlined from two **View XML** options to one. The View XML button on the Command tab has been removed. To view message XML, click the **View XML** tab.



Release Date: 05 FEB 2013

Release Summary

In this release, we moved to 2013 licenses and corrected minor issues.

Installation Modifications

RAS now requires a 2013 license. If you have not received a 2013 license, please contact [RadBlue Support](#).

Transcript Modifications

- An issue in which the Message Transcript was causing abnormally high CPU usage by the tool has been corrected.
- The Advanced Transcript Analyzer now properly handles `eventReport` commands that are created and cached by the EGM during startup, which resulted in unexpected associated data because the event transmission was delayed.