



# RadBlue Analysis Suite Version 25

[Released: 05 DEC 2012]

Questions?

Log on to the RadBlue Forum: <http://radblue.mywowbb.com/>

## Release Notes

### Release Summary

For this release, we added schema support for G2S 2.1, updated the Java version requirement and added a Validation Error tab to the `optionConfig.optionList` details screen in the Message Transcript.

For more information on the features and modifications discussed in this document, see the [RAS User Guide](#).

### New Features

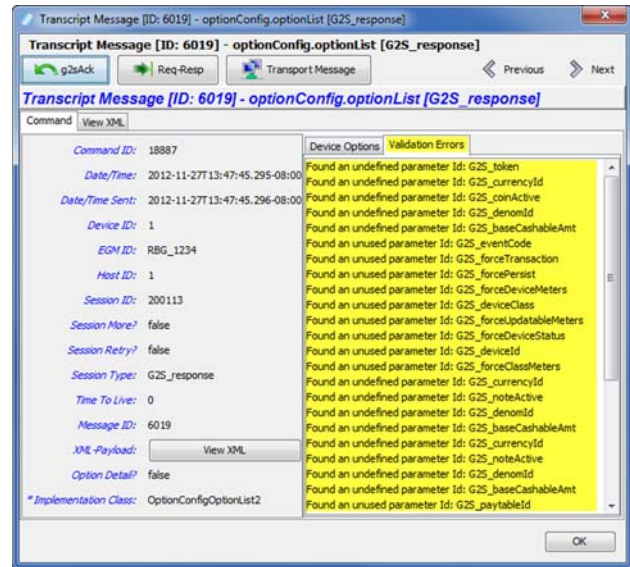
- For this release, we added schema support for G2S version 2.1, which means that this product will now use the G2S 2.1 schema by default. Since the G2S 2.1 schema is backwards compatible with G2S 1.1, this should be a non-issue for most people, but it lets us start adding in the new classes and functionality that are available in this new version of the protocol. You'll see these new G2S 2.1 features noted in the release notes with a ***New for 2.1!*** prefix.
- The **audit meters** and **communications** classes have been implemented in accordance with the 2.1 protocol. Additional classes will be implemented in subsequent releases.
- A list of all third-party software used by RadBlue and links to their licensing agreements has been added to the [Products](#) page of the RadBlue website.

### Installation Modifications

- All RadBlue products now require **Java SE 7u7** or higher. If the installer cannot find this version on your computer, you are prompted to download and run the Java installer, or navigate to the correct Java version. Oracle moved to Java 7 nearly a year ago, so it is now stable enough that we are moving there as well. This should have minimal effect on your environment, but keeps our products on modern versions of the underlying technology.

## Transcript Modifications

- A **Validation Errors** tab that displays semantically incorrect `optionList` responses has been added to the `optionConfig.optionList` details screen in the Message Transcript. You can access the details screen by double-clicking the row in the Message Transcript for the message you want to view.





# RadBlue Analysis Suite Version 24

[Released: 03 OCT 2012]

Questions?

Log on to the RadBlue Forum: <http://radblue.mywowbb.com/>

## Release Notes

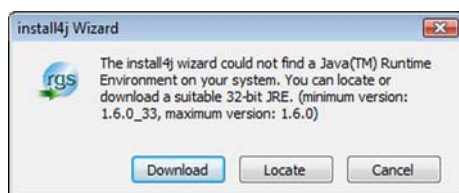
### Release Summary

For this release, we updated the required Java version, added support for the System API Transcript from RGE, and updated the associated events in the Advanced Transcript Analyzer for G2S 1.1.

For more information on the features and modifications discussed in this document, see the [RAS User Guide](#).

### Installation Modifications

- **Java 1.6.0\_33** is now required to run RadBlue products. If your computer does not have this version installed, you are prompted to download and run the Java installer, or to navigate to the correct Java version.



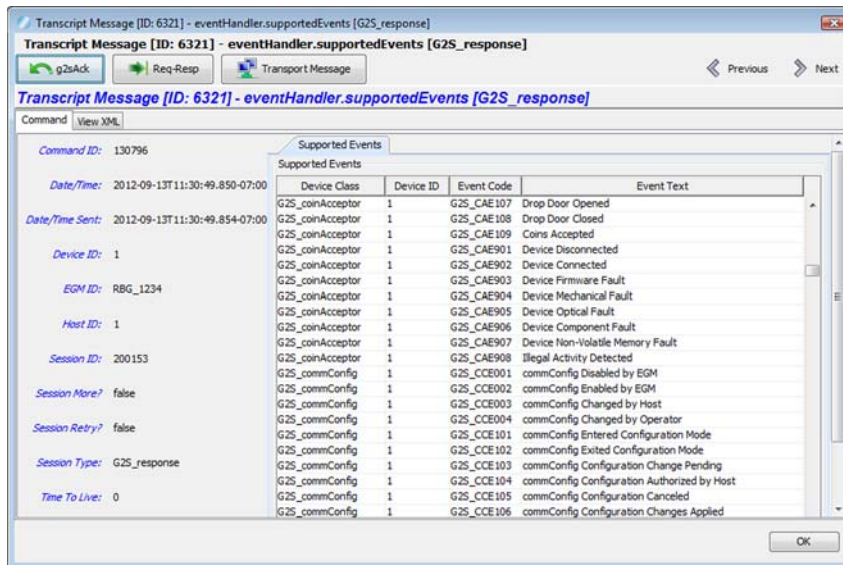
### User Interface Modifications

- The RAS version number is now located at the bottom of the RAS screen.

### Transcript Modifications

- RAS now supports the **System API Transcript** from the RadBlue G2S Engine (RGE).
- The **Source** and **Destination** columns in the **SOAP Transcript** have been reversed, so the Source column now appears first when reading from left to right.
- The **Debug Log** has been renamed to **Debug Console**.

- The **Supported Events** list in the detail command view of the `eventHandler.supportedEvents` command is now sorted alphabetically by Device Class, Device ID and then Event Code.



- Events and their associated data in the **Advanced Transcript Analyzer** have been updated for G2S 1.1.

The following G2S extensions had all event events added to the Advanced Transcript Analyzer:

- ◆ 1a2
- ◆ 1e
- ◆ 1g1
- ◆ 1k1

The following events have been removed:

- ◆ G2S\_CBE321
- ◆ G2S\_CCE001
- ◆ G2S\_CCE002
- ◆ G2S\_OCE001
- ◆ G2S\_OCE002

The following events have had their associated data updated:

Event	Modification
G2S_CBE005 - Host Changed Cabinet Config	Status added.
G2S_CBE006 - Operator Changed Cabinet Config	Status added.
G2S_CBE315 - Date/Time Changed	Status removed.
G2S_CBE317 - Power Off - Logic Door Open	Meters removed.
G2S_CBE318 - Power Off - Auxiliary Door Open	Meters removed.
G2S_CBE319 - Power Off - Cabinet Door Open	Meters removed.
G2S_CBE321 - Life-to-Date Meters Reset	Meters and Logs removed.
G2S_CBE322 - NVM Cleared	Meters, Logs and Status removed.
G2S_CCE003 - commConfig Changed by Host	Status added.
G2S_CCE004 - commConfig Changed by Operator	Status added.
G2S_OCE003 - optionConfig Configuration Changed by Host	Status added.
G2S_OCE004 - optionConfig Configuration Changed by Operator	Status added.
G2S_DLE005 - Device Configuration Changed by Host	Status added.
G2S_DLE006 - Device Configuration Changed at EGM	Status added.
G2S_JPE005 - Handpay Configuration Changed by Host	Status added.
G2S_JPE006 - Handpay Configuration Changed by Operator	Status added.
G2S_JPE103 - Remote Key-Off Initiated	Logs added.
G2S_CAE005 - Device Configuration Changed by Host	Status added.
G2S_CAE006 - Device Configuration Changed by Operator	Status added.
G2S_NAE005 - Device Configuration Changed by Host	Status added.
G2S_NAE006 - Device Configuration Changed by Operator	Status added.
G2S_NAE103 - Stacker Removed	Meters added; Status removed.
G2S_HPE005 - Device Configuration Changed by Host	Status added.
G2S_HPE006 - Device Configuration Changed by Operator	Status added.
G2S_NDE005 - Device Configuration Changed by Host	Status added.
G2S_NDE006 - Device Configuration Changed by Operator	Status added.
G2S_PTE005 - Printer Configuration Changed by Host	Status added.
G2S_PTE006 - Printer Configuration Changed by Operator	Status added.
G2S_PGE102 - Progressive Hit	Status removed.

<b>Event</b>	<b>Modification</b>
G2S_PGE104 - Progressive Committed	Meters added; Status removed.
G2S_IDE005 - Device Configuration Changed by Host	Status added.
G2S_IDE006 - Device Configuration Changed by Operator	Status added.
G2S_IDE107 - ID Validation Expired (ID Abandoned)	Status added.
G2S_BNE005 - Device Configuration Changed by Host	Status added.
G2S_BNE006 - Device Configuration Changed by Operator	Status added.
G2S_PRE005 - Player Device Configuration Changed by Host	Logs removed.
G2S_PRE006 - Player Device Configuration Changed by Operator	Logs removed.
G2S_PRE101 - Interval Rating	Logs added.
G2S_PRE111 - Player Carryover Set	Status removed.
G2S_PRE112 - Player Point Balance Set	Logs removed.
G2S_VCE005 - Voucher Configuration Changed by Host	Status added.
G2S_VCE006 - Voucher Configuration Changed by Operator	Status added.
G2S_WTE005 - WAT Configuration Changed by Host	Status added.
G2S_WTE006 - WAT Configuration Changed by Operator	Status added.
G2S_WTE101 - WAT Cash-Out to Host Disabled	Status added.
G2S_WTE102 - WAT Cash-Out to Host Enabled	Status added.
G2S_WTE109 - New Key Pair Established	Status added.
G2S_CLE005 - Central Device Configuration Changed by Host	Status added.
G2S_CLE006 - Central Device Configuration Changed by Operator	Status added.



# RadBlue Analysis Suite Version 23

[Released: 08 AUG 2012]

Questions?

Log on to the RadBlue Forum: <http://radblue.mywowbb.com/>

## Release Notes

### Release Summary

For this release, we added summary view to each Comms Session in the Advanced Transcript Analyzer; improved the Advanced Transcript Analysis Report and corrected several minor issues.

For more information on the features and modifications discussed in this document, see the [RAS User Guide](#).

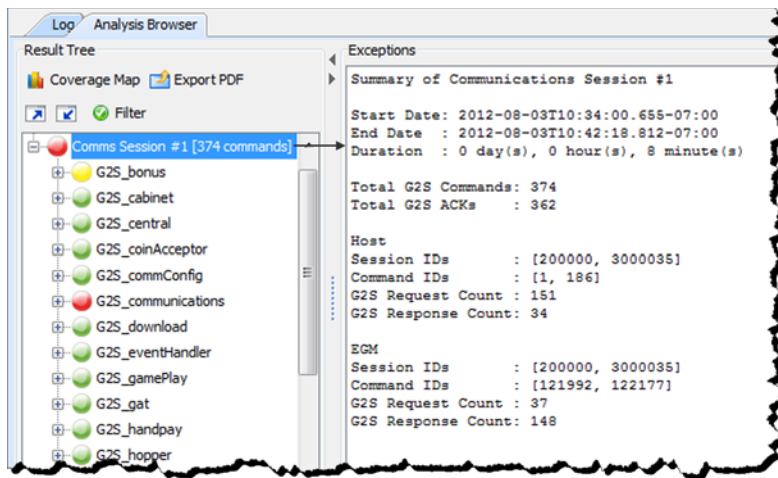
### Configuration Modifications

- The **Clear Transcript Messages on Startup** option, which cleared the transcript database each time RPA was launched, has been removed from the **Databases** tab on the Engine Options configuration screen (**Tools > Configure > Engine Options**). The tool adds a message ID to each message for sequences, so the database must always be cleared on startup.

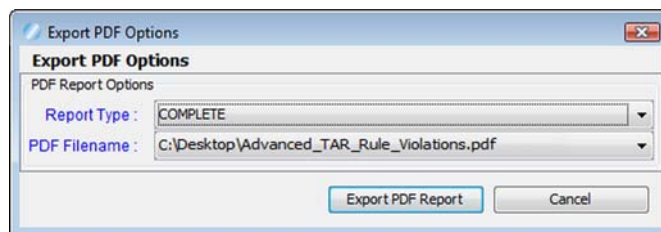
### Transcript Modifications

- For G2S\_GPE112 (Game Ended) events, the outcome of game play (the *playResult* attribute) is now shown in the Summary column, in brackets (for example, **eventReport:G2S\_GPE112 - Game Ended [Lost]**), in the Message Transcript.
- A **Message ID** column has been added to the Message Transcript, displaying the unique identifier associated with each message.
- An issue in which the **Device** column value in the Message Transcript did not display correctly has been corrected.
- An issue in which the Message Transcript's host selector displayed only a host ID of zero (0) has been corrected.
- An issue in which the `communications.commsOnLine` command details did not display in the SOAP Transcript has been corrected.

- When you click to highlight a Comms Session on the **Advanced Transcript Analyzer**, a summary of that Comms Session now displays under Exceptions.



- The following changes have been made to the **Advanced Transcript Analysis Report**:
  - ◆ An issue in which the **Host ID** was always zero (0), has been corrected. The report now reflects the correct host identifier.
  - ◆ An issue in which only the first page of the report was generated has been corrected.
  - ◆ The report time span field no longer contains milliseconds.
  - ◆ You can now choose to generate a report with all errors, including duplicates (Complete), or with all errors, excluding duplicates (Summary). You can also define the filename and output location for the PDF file.







# RadBlue Analysis Suite Version 22

[Released: 04 JUN 2012]

Questions?

Log on to the RadBlue Forum: <http://radblue.mywowbb.com/>

## Release Notes

### Release Summary

For this release, we made improvements to the Message Transcript, SOAP Transcript and Advanced Transcript Analyzer.

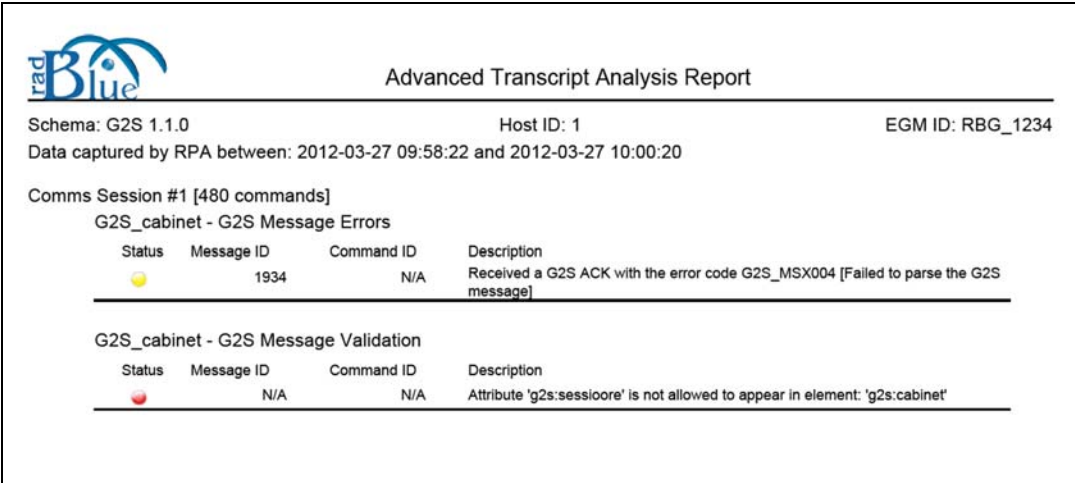
For more information on the features and modifications discussed in this document, see the [RAS User Guide](#).

### Transcript Modifications

- A **Compare** option has been added to the **Event Report** in the **Message Transcript** that lets you compare two event messages. In addition, a Message ID column and a Date Received column have been added to the Event Report
- A **Device** column has been added to the **Message Transcript** that displays the class and identifier of the device that the message is being sent to or from.
- A new **Export to Excel File** right-click option in the **Message Transcript** lets you quickly export the content of a G2S command to a Microsoft Excel spreadsheet. The following G2S commands can be exported to Excel:
  - ◆ `communications.descriptorList`
  - ◆ `eventHandler.eventSubList`
  - ◆ `eventHandler.setEventSub`
  - ◆ `eventHandler.supportedEvents`
  - ◆ `meters.meterInfo`
  - ◆ `optionConfig.optionList`
- An issue in which EGM and host used the same session IDs was causing missing records in the Message Transcript has been resolved.
- The following options have been made to the RAS SOAP Transcript:
  - ◆ **Search Content** - Click to search for keywords within all messages currently displayed in the SOAP transcript
  - ◆ **Clear Display** - Click to clear all messages from the SOAP transcript
  - ◆ **Clear DB** - Click to remove all messages from the SOAP Transcript database.

In addition, if the SOAP Transcript contains multiple EGMs (such as a transcript from RPA), you can now select the EGM data you want to view.

- **Host ID** and **Message ID** have been added to the **Advanced Transcript Analysis Report**




The screenshot displays the 'Advanced Transcript Analysis Report' interface. At the top left is the 'radBlue' logo. The title 'Advanced Transcript Analysis Report' is centered. Below the title, the report includes the following information:


- Schema: G2S 1.1.0
- Host ID: 1
- EGM ID: RBG\_1234
- Data captured by RPA between: 2012-03-27 09:58:22 and 2012-03-27 10:00:20
- Comms Session #1 [480 commands]

Two tables are shown:

**G2S\_cabinet - G2S Message Errors**

Status	Message ID	Command ID	Description
	1934	N/A	Received a G2S ACK with the error code G2S_MSX004 [Failed to parse the G2S message]

**G2S\_cabinet - G2S Message Validation**

Status	Message ID	Command ID	Description
	N/A	N/A	Attribute 'g2s:sessionore' is not allowed to appear in element: 'g2s:cabinet'



# RadBlue Analysis Suite Version 21

[Released: 04 APR 2012]

Questions?

Log on to the RadBlue Forum: <http://radblue.mywowbb.com/>

## Release Notes

### Release Summary

For this release, we added Host ID and EGM ID columns to the SOAP Transcript, and made several usability improvements.

For more information on the features and modifications discussed in this document, see the [RAS User Guide](#).

### Installation Modifications

- RAS now requires **Java 1.6.0\_31**. You are prompted to have the RAS installer automatically install this version of Java if it is not already running on your computer.

### Engine Modifications

- An issue in which the debug.zip log would not import correctly into RAS has been corrected by increasing the file size limit to 3MB.

### User Interface Modifications

- When you import a debug.zip file, a **progress bar** now lets you see the progress of the import.
- The display of the **metadata.html** file has been enhanced for better readability.
- Depending on the version of the product debug.zip file you are importing, you can now view the Message Transcript through either the **transcript-gsa.xml** (for older versions) or **transcript2-gsa.g2t** (for newer versions). Note that the **transcript-gsa.xml** file does not support advanced features such as linking to the `g2sAck` message, corresponding request-response pair command or the associated SOAP message when viewing the details of a command.

## Transcript Modifications

- SOAP faults now display in the SOAP Transcript and are noted in the Summary column as **SOAP Exception**.
- A **Host ID** column and an **EGM ID** column have been added to the SOAP Transcript.
- A **Host ID** selector has been added to the Message Transcript that allows you to filter the transcript by a specific host identifier or view all hosts. This option can be used with the EGM ID option to filter the Message Transcript by EGM and host.
- The Message Transcript now has improved handling of `g2sAck` commands and G2S application errors, and displays these messages in the Summary column.
- An issue in which the Advanced Transcript Analyzer misinterpreted the GAE101 event has been corrected.
- The Advanced Transcript Analyzer processing has been improved to generate more quickly.