

What Is the Advanced Transcript Analyzer?

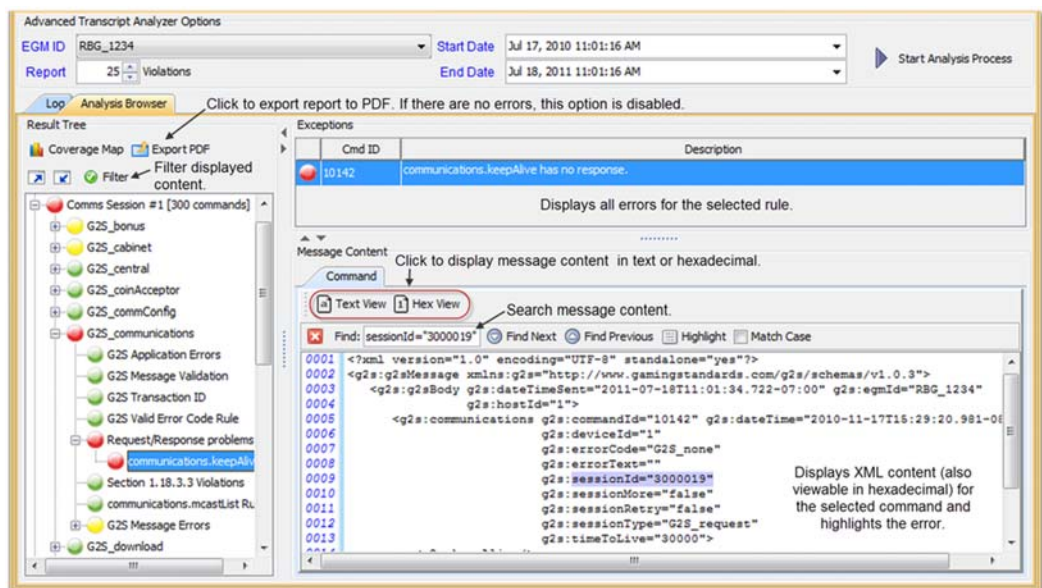
The Advanced Transcript Analyzer lets you easily verify that commands being sent by the EGM are semantically valid.

Visual cues let you easily discern which events have errors. You can then quickly drill down to the message content level to view the issue.

With the current version focusing on event subscriptions, the Advanced Transcript Analyzer validates:

- the event subscription set by the EGM is accurate when compared to the subscription requested by the host.
- every `eventReport` command sent by the EGM to ensure that the EGM has included the associated data agreed upon in the event subscription phase.
- selected attributes in the `eventReport` command to ensure that they properly indicate state transitions as identified by the G2S protocol document.

The Advanced Transcript Analyzer makes it easy for EGM developers and testers to deliver high-quality G2S implementations - and we're continuing to add new areas of investigation (more "rules" to run against your G2S application) to give you the most comprehensive testing possible.



Errors and warnings are displayed in the **Results Tree** on the left-hand side of the screen. Click the plus sign to drill down to warnings and errors. To narrow the displayed results, click the **Filter** option and choose to display warnings and errors only or specific classes only.