

Release Date: 2 June 2021

This release:

- Updated Java to 1.8.0\_275
- Updated JIDE to 3.7.12-pre

If you have any ideas for improvement, questions, or issues let us know at [support@radblue.com](mailto:support@radblue.com).

<i>Case</i>	<i>Description</i>
17157	Update Java to 1.8.0_275
17158	Update JIDE to 3.7.12-pre

This release:

- Implemented CIC-67 - Deprecate test cases based on GSMP-1956
- Updated Apache CXF to 3.2.13

If you have any ideas for improvement, questions, or issues let us know at [support@radblue.com](mailto:support@radblue.com).

<i>Case</i>	<i>Description</i>
16707	Updated Apache CXF to 3.2.13.
16755	Starting a web server to handle help files to work around a limitation in FireFox.
16798	Implement CIC-67. Deprecates CB-COR-00011 and CB-COR-00042.
16799	CB-COR-00059. This case tests that the disable text is displayed when the cabinet is locked.
16803	CB-COR-00060. This case verifies that the EGM updates the egmState , deviceClass and deviceId attributes to reflect the current state when the cabinet device is locked or disabled.

Release Date: 7 December 2020

This release:

- Updated Java to OpenJDK 1.8.0\_242.
- Tool renamed from “CVT for EGM” to CVT.

If you have any ideas for improvement, questions, or issues let us know at [support@radblue.com](mailto:support@radblue.com).

<i>Case</i>	<i>Description</i>
16392	Updated Java to OpenJDK 1.8.0_242.
16395	Fixed a bug where transport was stuck in a loop when SSL connections fail.
16563	Converted “CVT for EGM” references to CVT.

This release:

- Added new capabilities to retrieve and set the audit meter subscription.
- Added SOAP transcript to help diagnose transport errors.
- Bug fixes to GAT processing

If you have any ideas for improvement, questions, or issues let us know at [support@radblue.com](mailto:support@radblue.com).

<i>Case</i>	<i>Description</i>
14180	Added a feature to determine if the audit meter subscription has been set.
14195	Fixed a bug when retrieving GAT verification results. The error was in the un-marshalling of XML.
14197	Added SOAP transcript to the CVT to diagnose SOAP transport errors.
14229	Fixed a bug when GAT verifying a component that has an ampersand in the component ID.
14236	Added the ability to set the EOD offset for EGMs that don't calculate the correct end of day offset.
14277	Set the default salt to 16 zeros. This allows the CVT to request GAT results that match values generated by regulators.
14350	Fixed a bug that allowed the user to manipulate an EGM that was not connected to the CVT.
14820	Persist the value of GZIP_IN_HTTP_STACK and GZIP_PAYLOAD between installations of the CVT.

This release:

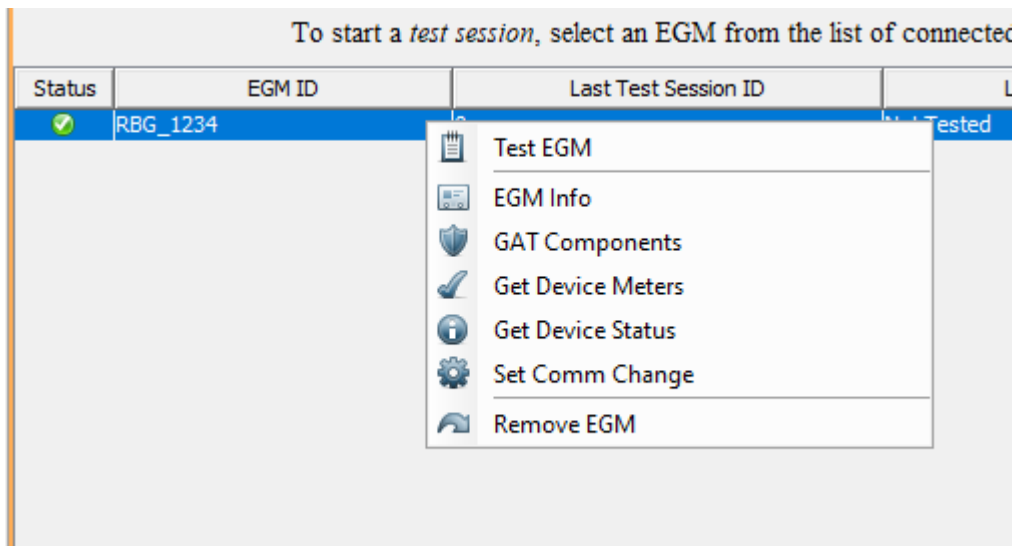
- Added new capabilities to survey an attached EGM.

If you have any ideas for improvement, questions, or issues let us know at [support@radblue.com](mailto:support@radblue.com).

Case	Description
13896	Fixed a bug where the CVT installer's backup and restore was not using the proper directory.
13909	Added the ability to capture the device meters and audit meters of an attached EGM.
19310	Added the ability to verify the components of an attached EGM using SHA-256 GAT algorithm.
13911	Added the ability to display cabinet level information on an attached EGM.
13912	Added the ability to capture the device status of an attached EGM.
14031	Added the ability to set an audit meter subscription on an attached EGM.

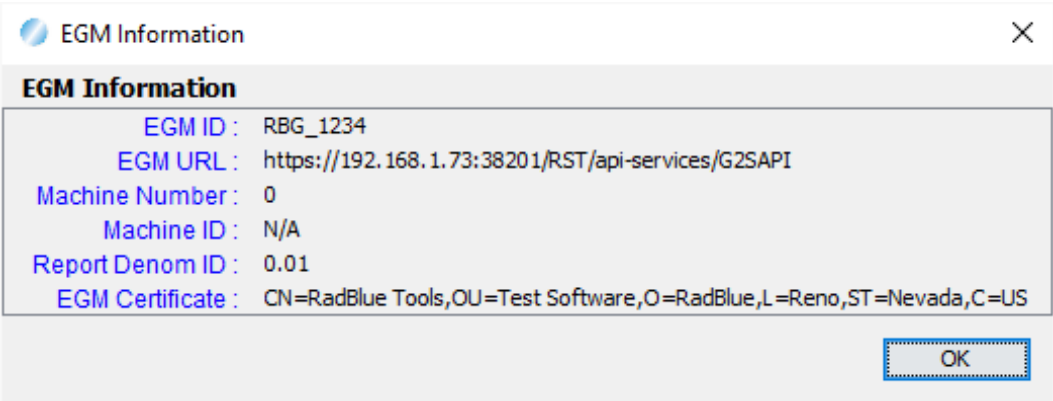
## Ability to survey an EGM

In this release, the user can now survey an attached EGM without running a test. This allows the user to gather information about the EGM before or after a test run.



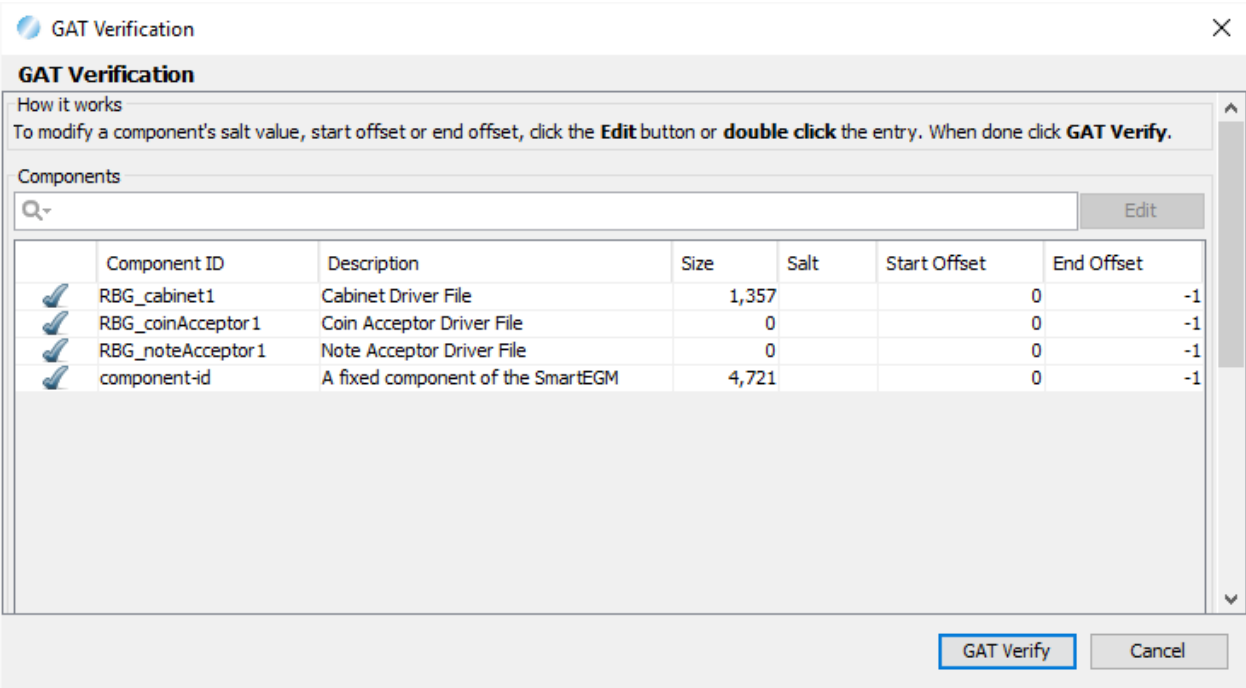
EGM Info

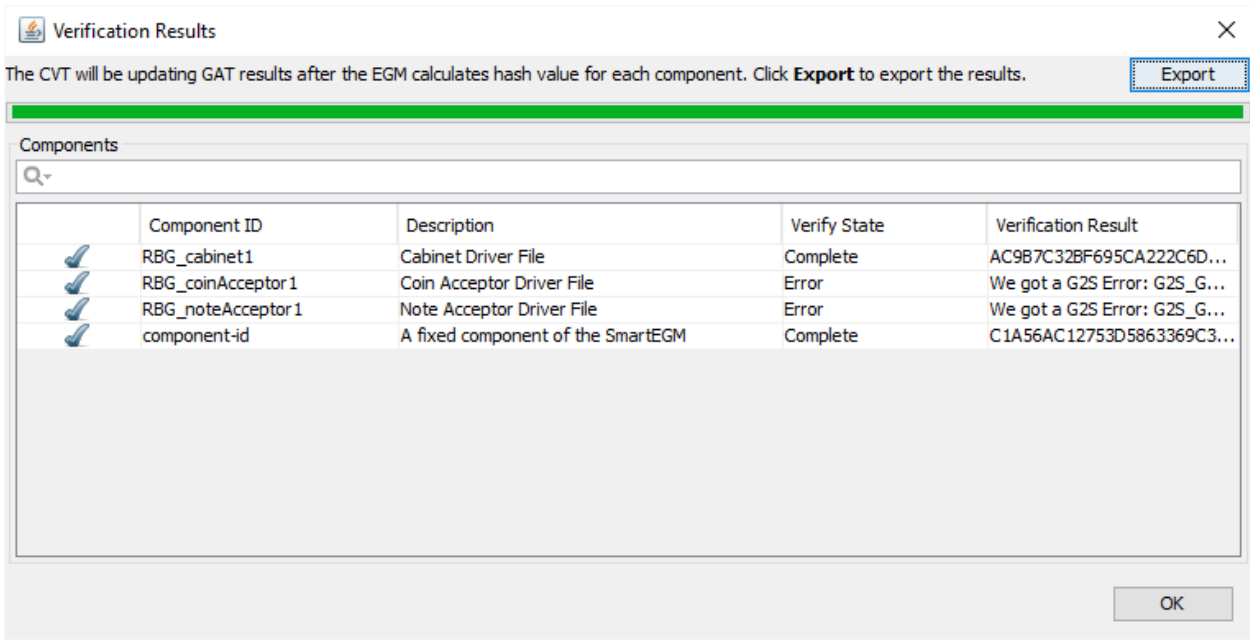
The CVT queries the EGM’s cabinet device and display key information along with the certificate that was used by the EGM.



GAT Verification

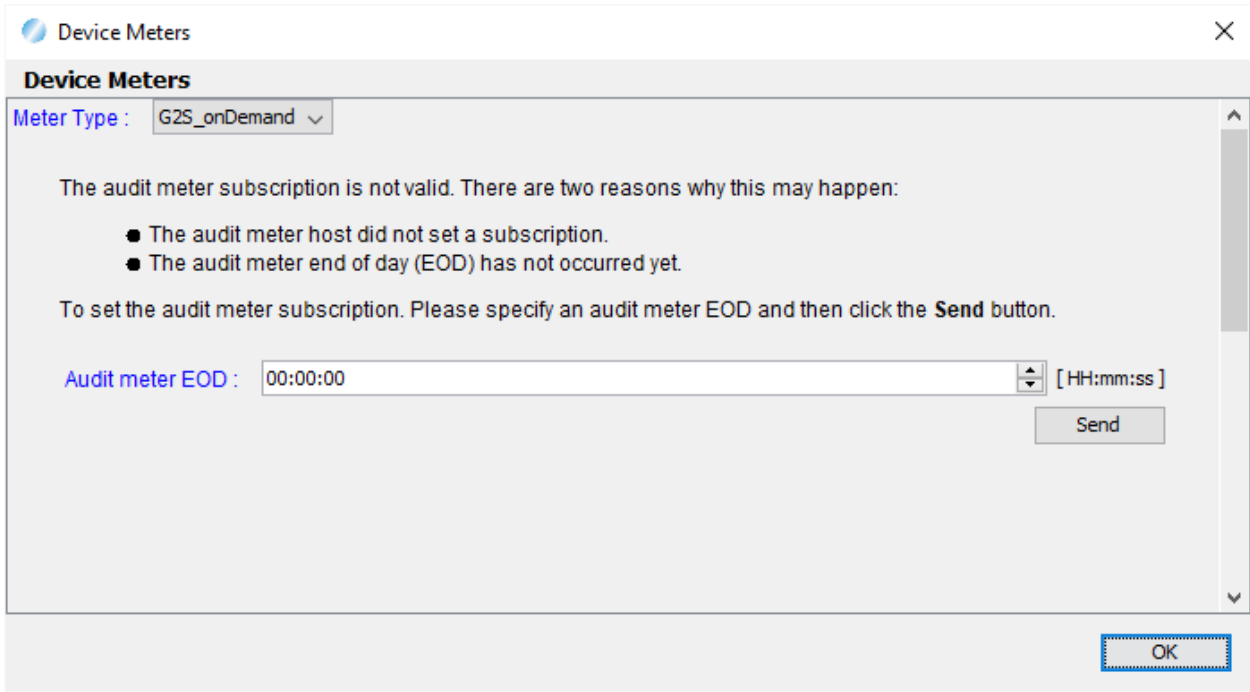
The CVT will query the EGM to determine the list of components. When the user clicks the **GAT Verify** button the CVT will request the EGM GAT verify all components that support SHA-256 algorithm.





### Device Meters

The CVT can now query the audit meters and device meters for an attached EGM. If the EGM support audit meters, but does not have a valid meter subscription, the CVT will prompt the user to set an audit meter by specifying the end of day when the audit meter snapshot should be taken.



If the audit meter subscription is valid and the EGM has created the snapshot, the CVT will display the meter totals in a configurable display. Please contact RadBlue support if you need help configuring the audit meter configuration.

**Device Meters**

Meter Type : G2S\_onAudit

Export

On Audit Summary | On Audit Details

EGM ID : RBG\_1234  
Audit date/time : 2018-05-30T13:27:00.002-07:00

Audit meters

Meter	Value
Total IN	25.00
Total OUT	5.00
Games	20.00
Handpay	0.00
Jackpot	0.00
Bill IN	20.00
Cashless IN	0.00
Cashless OUT	0.00
Promo Credits IN	0.00
Promo Credits OUT	0.00

OK

### Device Status

The CVT queries the EGM and retrieves all of the device status elements. The CVT then displays the result in the following panel. This information can be exported to allow for comparisons reporting.

**Device Statuses**

Export

Device Class	Device ID	Parameter	Value
G2S_bonus	1	Bonus Active	false
G2S_bonus	1	Config Complete	true
G2S_bonus	1	Config Date/Time	<Not Set>
G2S_bonus	1	Configuration ID	0
G2S_bonus	1	Delay Games	0
G2S_bonus	1	Delay Later	false
G2S_bonus	1	Delay Time	0
G2S_bonus	1	Delay Value	0
G2S_bonus	1	EGM Enabled	true
G2S_bonus	1	Host Active	true
G2S_bonus	1	Host Enabled	true
G2S_bonus	1	Host Locked	false
G2S_bonus	1	Wager Match EGM Escrow	0
G2S_bonus	1	Wager Match Player Escrow	0
G2S_cabinet	526059076	Audit Win Fault	false
G2S_cabinet	526059076	Audit Win Pending	false
G2S_cabinet	526059076	Auxiliary Door Open	false
G2S_cabinet	526059076	Auxiliary Door Open Date/Time	<Not Set>

OK



Release Date: 4 December 2017

This release:

- Added support to disable GZIP in the HTTP stack and GZIP in payload for EGMS that do not support getTransportOptions.
- Implemented GSATB-144 by changing the namespace associated with the mystery class.
- Upgraded Java to 1.8.0\_152.

If you have any ideas for improvement, questions, or issues let us know at [support@radblue.com](mailto:support@radblue.com).

*Case Description*

12904	Updated Java to 1.8.0_152.
12913	Added support to disable GZIP in the HTTP stack and payload to support EGMS that do not support getTransportOptions.
13120	Implemented GSATB-144 by changing the namespace associated with the mystery class to <a href="http://www.gamingstandards.com/g2s/schemas/v1.0.3/ExtMP">http://www.gamingstandards.com/g2s/schemas/v1.0.3/ExtMP</a> along with other minor schema changes from GSA.